

# DOMUS NOVA

Westbourne Grove

Bayswater W2


APPROXIMATE GROSS INTERNAL AREA

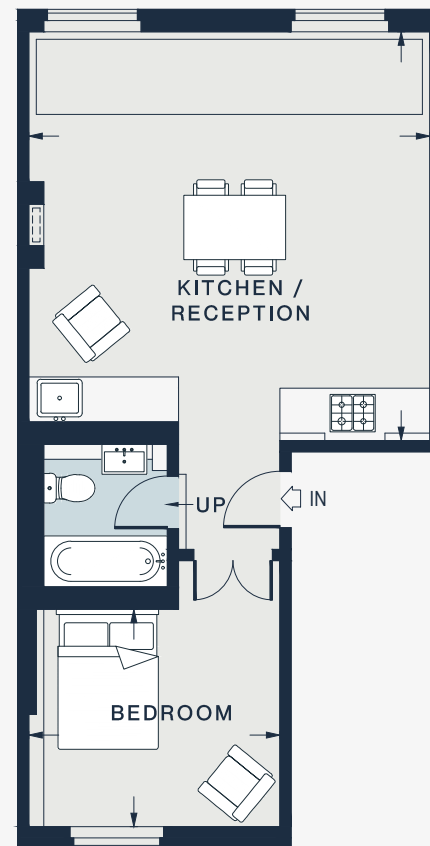
500 sq ft / 46.5 sq m

020 7221 7817

domusnova.com

LONDON | IBIZA

 = Reduced head height below 1.5m



FIRST FLOOR

KITCHEN / RECEPTION

17'10 x 17'6 (5.4m x 5.3m)

BEDROOM

11'0 x 9'7 (3.3m x 2.9m)

Floor plans are for illustrative purposes only and not to scale. Compliant with RICS code of measuring practice.