

DOMUS NOVA



Wotton Road, W2 – £3,000 p/w (LL)

In partnership with **BARNES**
INTERNATIONAL REALTY



Formerly part of an historic aircraft factory, this five-bedroom split-level penthouse for rent retains a sense of its industrial heritage.

Remodelled with architectural ingenuity by Caireen O'Hagan and Base Associates in 2018, this duplex penthouse apartment pays tribute to its trailblazing history. Once occupied by Handley Page, one of the UK's aviation powerhouses, its expansive footprint is emphasised by urban materials and a mass of glazing.

Accessed by a 30-metre-long driveway, an arresting triple-height courtyard space sets a punchy industrial aesthetic in motion. Expect Crittall windows, exposed steel beams, poured concrete and raw brickwork. Inspiring eco credentials are also threaded into the building's framework – note the 162 rooftop solar panels.

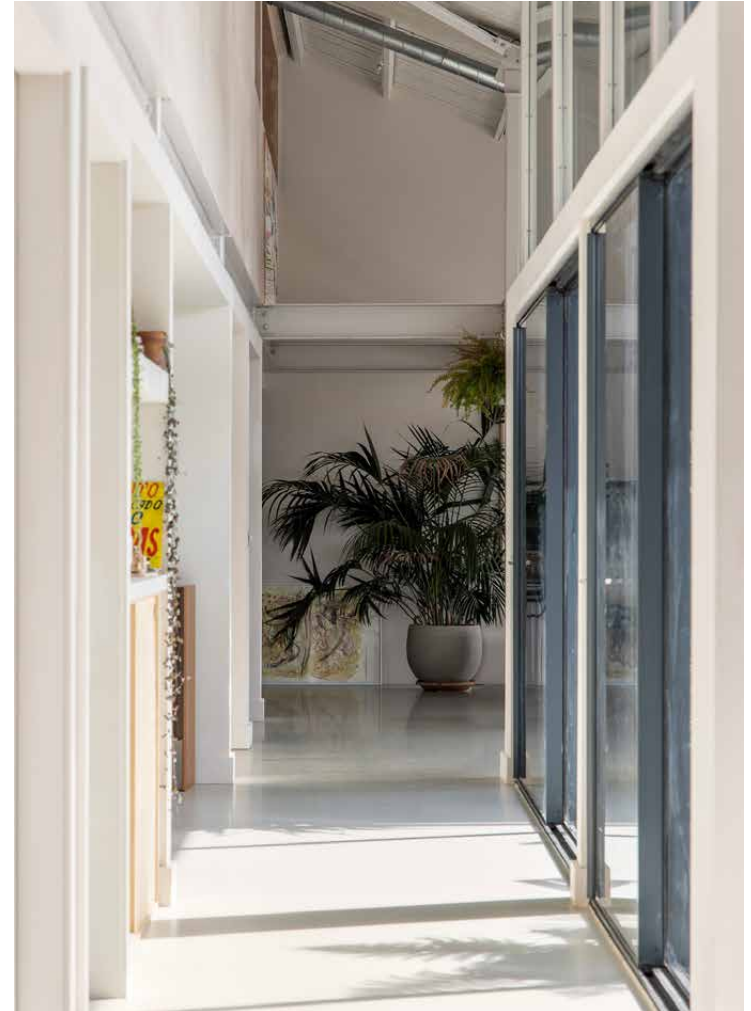


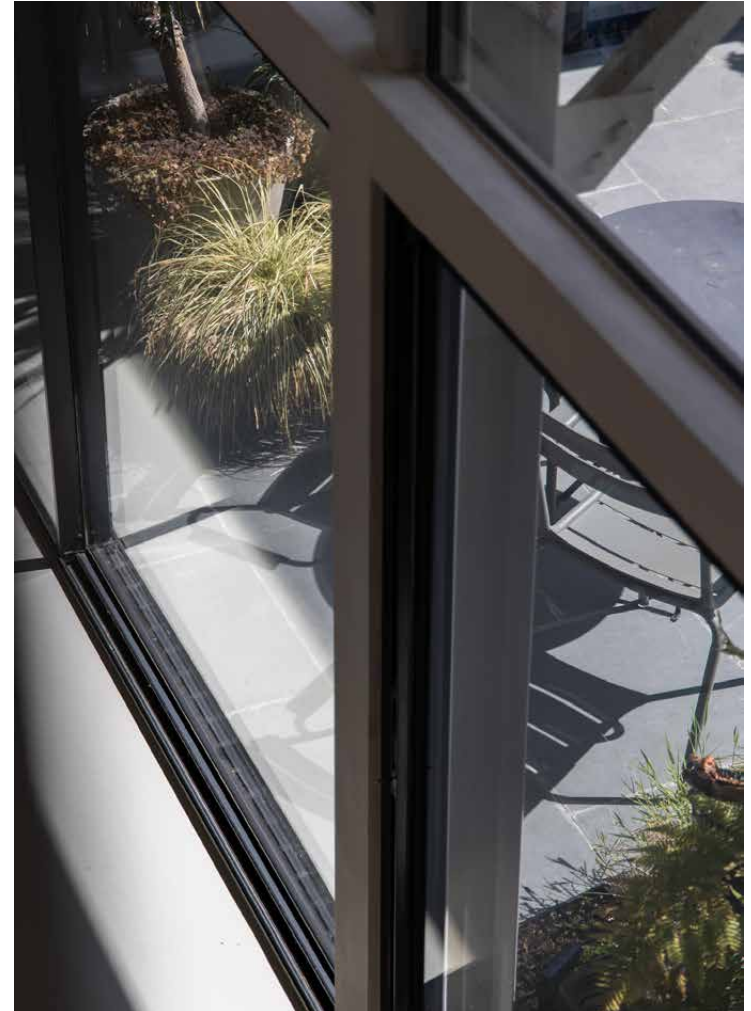
An impressive sense of volume and natural light define the main living space. Tailor-made for entertaining, the kitchen sits beneath a soaring pitched wooden ceiling. A concrete island provides a central focal point, while a second culinary station is finished with stainless steel surfaces, Gaggenau appliances and an Alpes Inox hob with smokeless indoor grill.

Light floods into the space from a central terrace with full height sliding windows that blur the boundaries between inside and out. Beyond, two reception areas – one larger, one more intimate – also enjoy access to the outdoors.





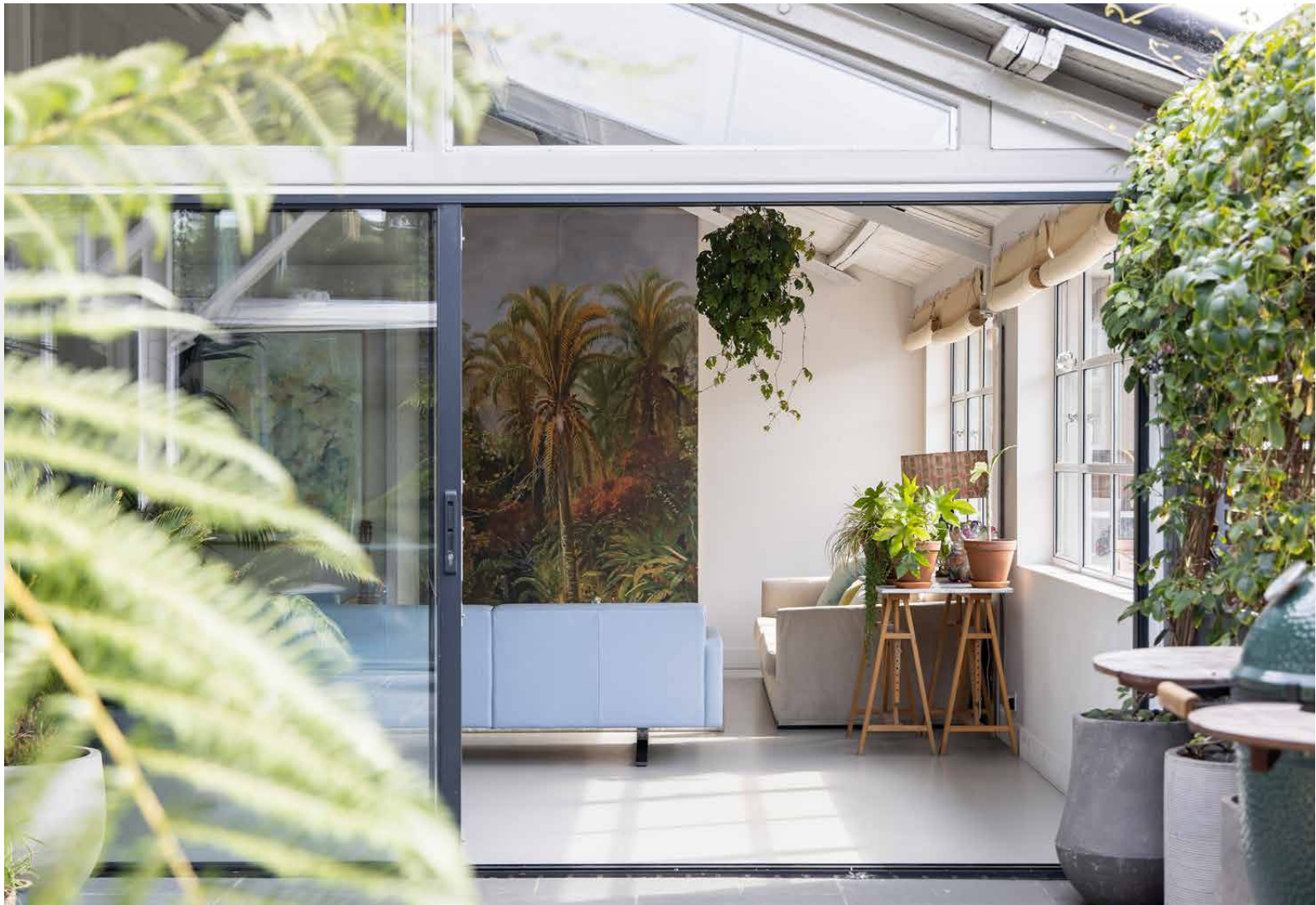








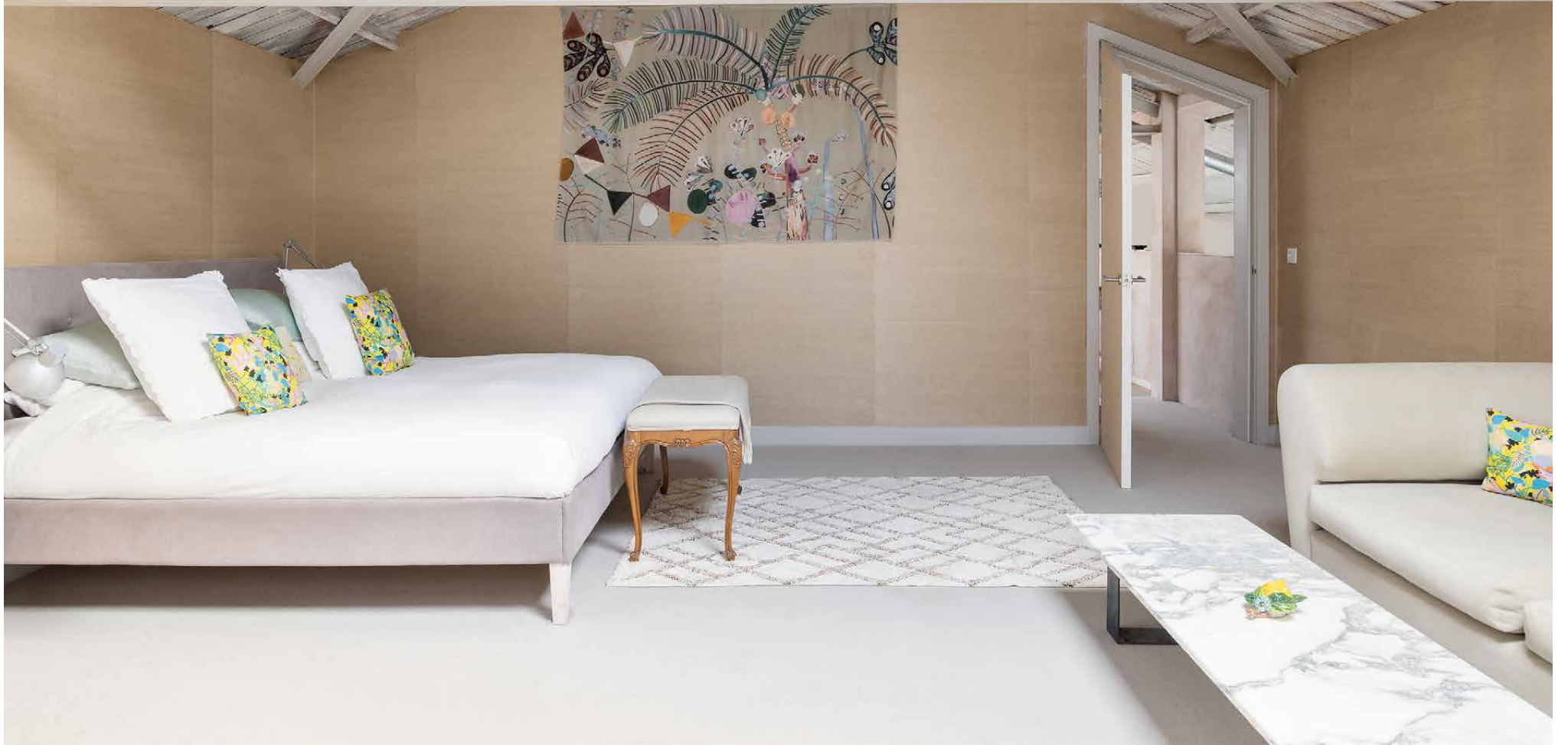






Upstairs, the entire second floor can be configured as a palatial principal bedroom suite, spanning a study, dressing room and bathroom, together with a bright day room and open shower that lead directly onto a second south-facing terrace.

Three further bedrooms, interlinked by two Jack and Jill bathrooms, are located on the first floor, finished in neutral tones that contribute to a calming feel.

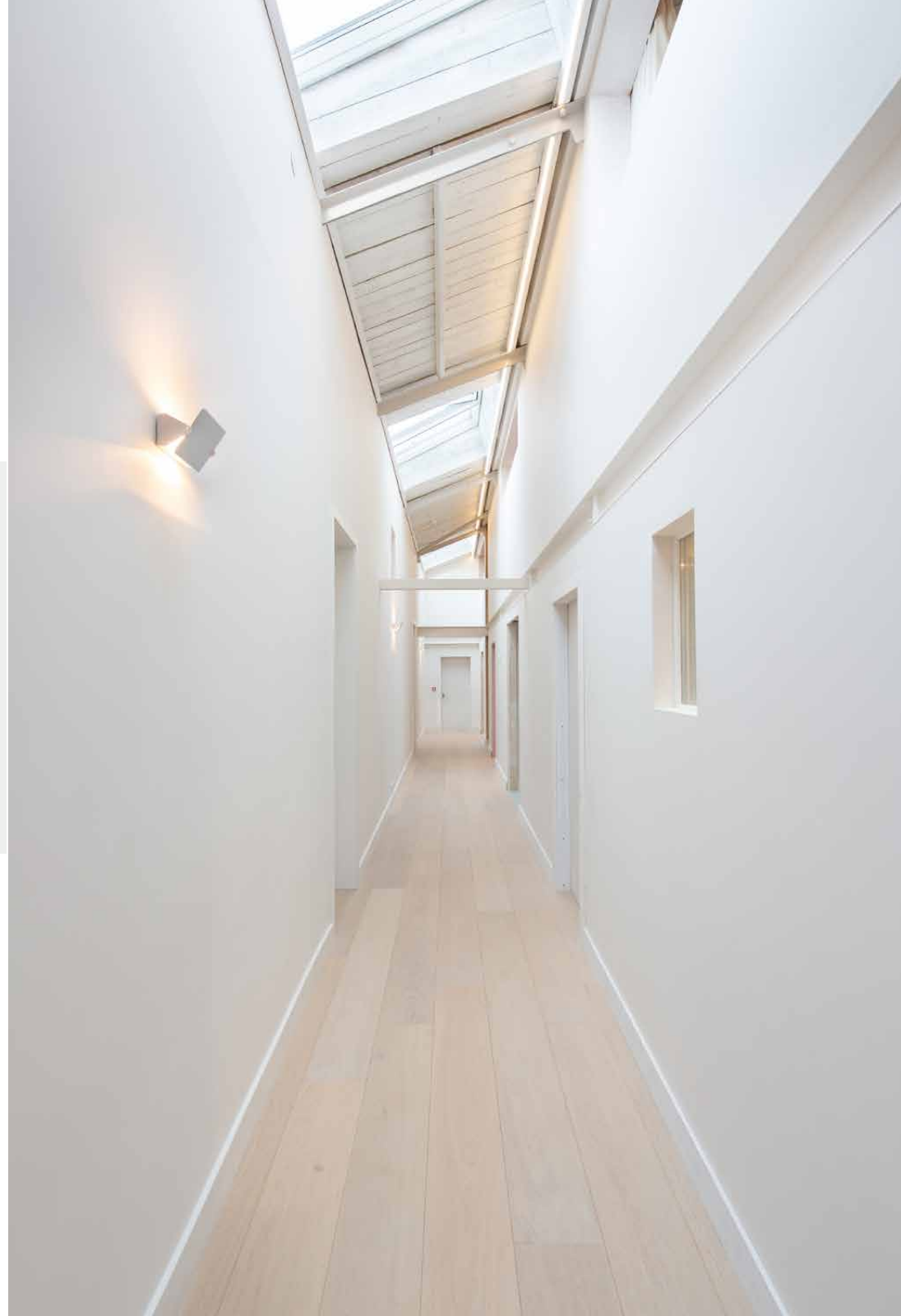


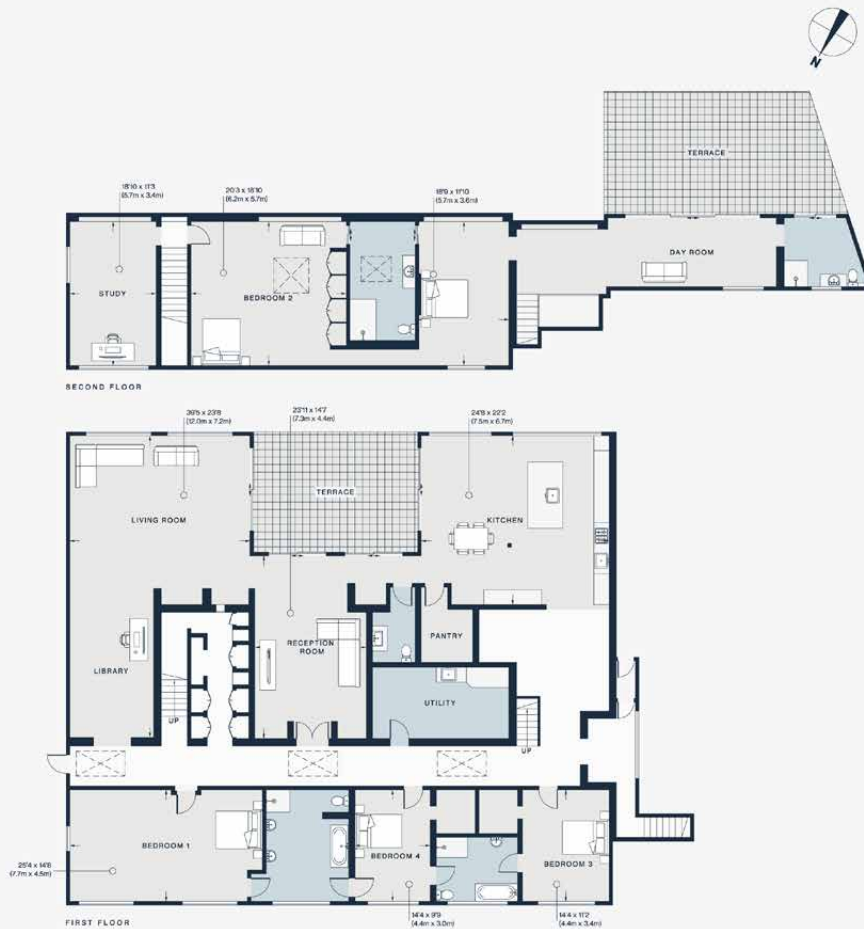












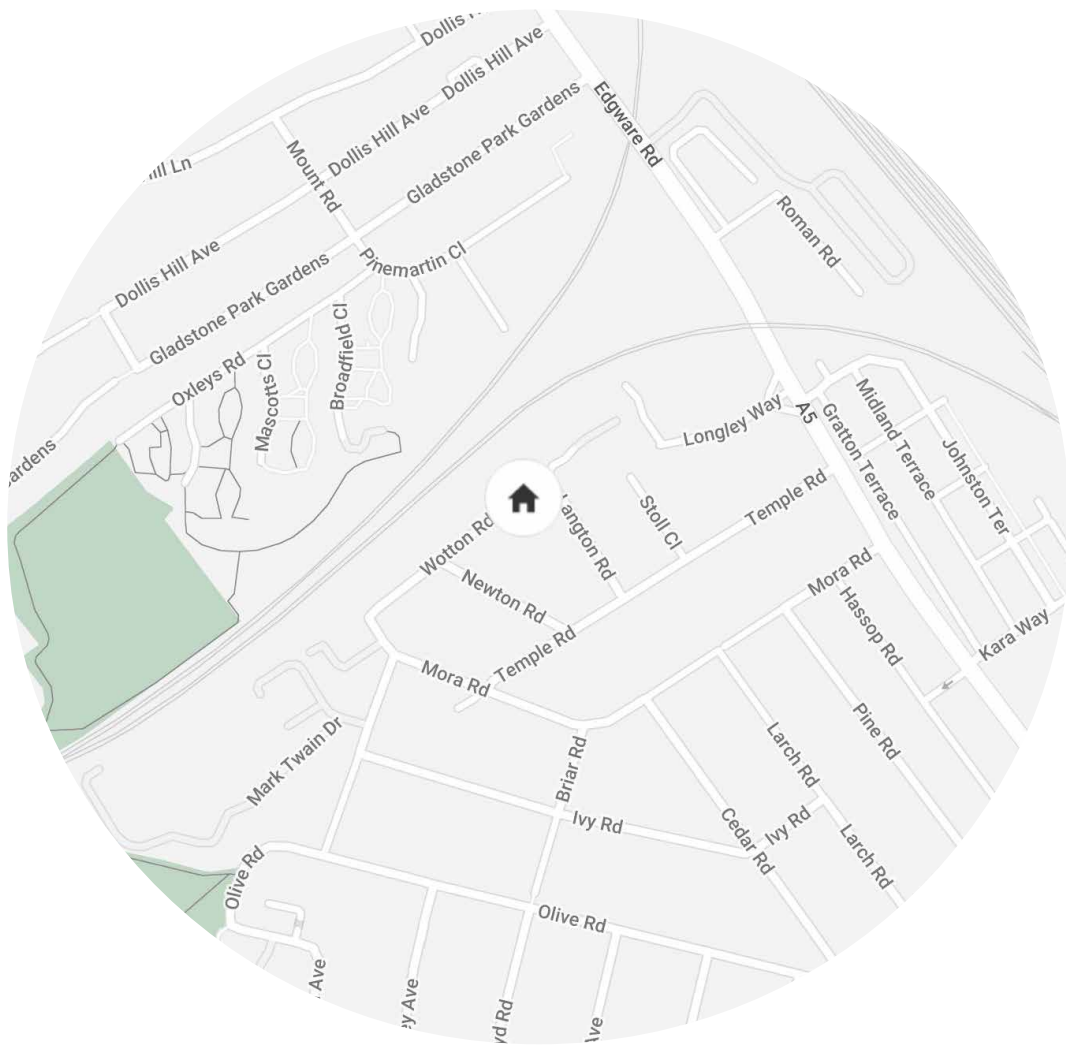
Approx. Gross Internal Area = 5711 sq ft / 530 sq m

Floor plans are for illustrative purposes only and not to scale. Compliant with RICS code of measuring practice. Furniture layouts are indicative only. This property may be furnished, part-furnished or unfurnished. Please refer to your agent for details.

Property Details

- 5 bedrooms, 4 bathrooms
- Private gated driveway with parking space
- Internal courtyard with living wall and EV charger
- Five-bedroom duplex penthouse (5,711 sq ft)
- Open-plan kitchen and two reception rooms
- Principal bedroom suite with day room, dressing room and study
- Two roof terraces
- Wet underfloor heating and three MVHR systems
- Rooftop solar panels, generating 65Kwh of electricity
- London Borough of Brent

Approx 5,711 sq ft / 530 sq m
 EPC - C
 Council Tax Band - G
 Deposit Payable - £18,000



Location

Surrounded by the leafy London suburbs of Mapesbury, West Hampstead and Willesden Green, Gladstone Park is a neighbourhood rising in popularity with families, creatives and young professionals. The property is 400 metres from Gladstone Park, a mini-Hampstead Heath, where tennis courts, playgrounds and stretches of greenery give way to views across northwest London. Commuters will benefit from nearby Cricklewood station, which offers easy access into central London and beyond; Kentish Town is two stops away, St Pancras International/King's Cross three stops, and Farringdon four stops. Wotton Works' proximity to the north circular also makes journeys further afield convenient – join the M1 or A1 in just 10 minutes, and the M40 in 17. Brent Cross Shopping Centre, with its abundance of retailers, is also a short drive away.

Nearest tube:

Cricklewood Train Station - 13 mins
Willesden Green - 17 mins
Brent Cross Train Station - 18 mins
Dollis Hill - 19 mins



Who ——— we are

Forward-thinkers in property, design and culture, we're an estate agency that hits refresh.

Domus Nova was born out of a desire to do things differently; to break the traditional agency model and focus on design-led homes in London and Ibiza, all while delivering the highest levels of personal service.

Our story starts in the nineties when we founded Notting Hill's first boutique agency – and we continue to open the doors to the most remarkable spaces, revealing them to our like-minded community.

We want to help you live better – and believe considered design can do that. That's why we remain committed to building on our legacy, in collaboration with BARNES International, an established agency with a market-leading presence in 22 countries.

Uniting our local insight and curated portfolio with BARNES International's expansive reach, we can facilitate the best opportunities in not only London and Ibiza, but also across Europe, the US and further afield – whether that's a château in the South of France, a penthouse in New York, or a chalet in the Swiss Alps.



DOMUS NOVA

Specialising in London
and Ibiza's design-led homes

Let's talk

020 7727 1717

lettings@domusnova.com

The property particulars are a guide not statements. Descriptions, photographs, and plans are for guidance and should be checked by the prospective tenant. The Property is offered "subject to contract and references". No warranties, representations, or Tenancy is given by Domus Nova. Expenses incurred by a prospective tenant will not be reimbursed if the Landlord withdraws prior to the Tenancy Agreement being signed, dated and exchanged and cleared funds received. Furniture and other items shown in a property at viewing may belong to a current tenant. The prospective tenant should verify in writing which fixtures and fittings forms part of the Tenancy. Our full lettings disclaimer together with trading names and our [Privacy Policy](#) is shown on our website

© 2025 Domus Nova in partnership with BARNES International. All rights reserved.

In partnership with
BARNES
INTERNATIONAL REALTY