

DOMUS NOVA



Westbourne Terrace W2
£1,950 p/w Long let



Handsome classical design characterises the property's exterior; ionic columns and stucco frontages speak of Westbourne Terrace's Georgian heritage. Inside this three-bedroom family home, period proportions have been brought to life with a contemporary eye.

The ground-floor kitchen sets a sophisticated character, with blonde wood floors and muted tones. Reams of sunlight filter through bay windows, accentuating the room's high ceilings and intricate cornicing. There's streamlined flow around the marble island and integrated appliances for an ergonomic culinary space. Next door, find a separate utility room.

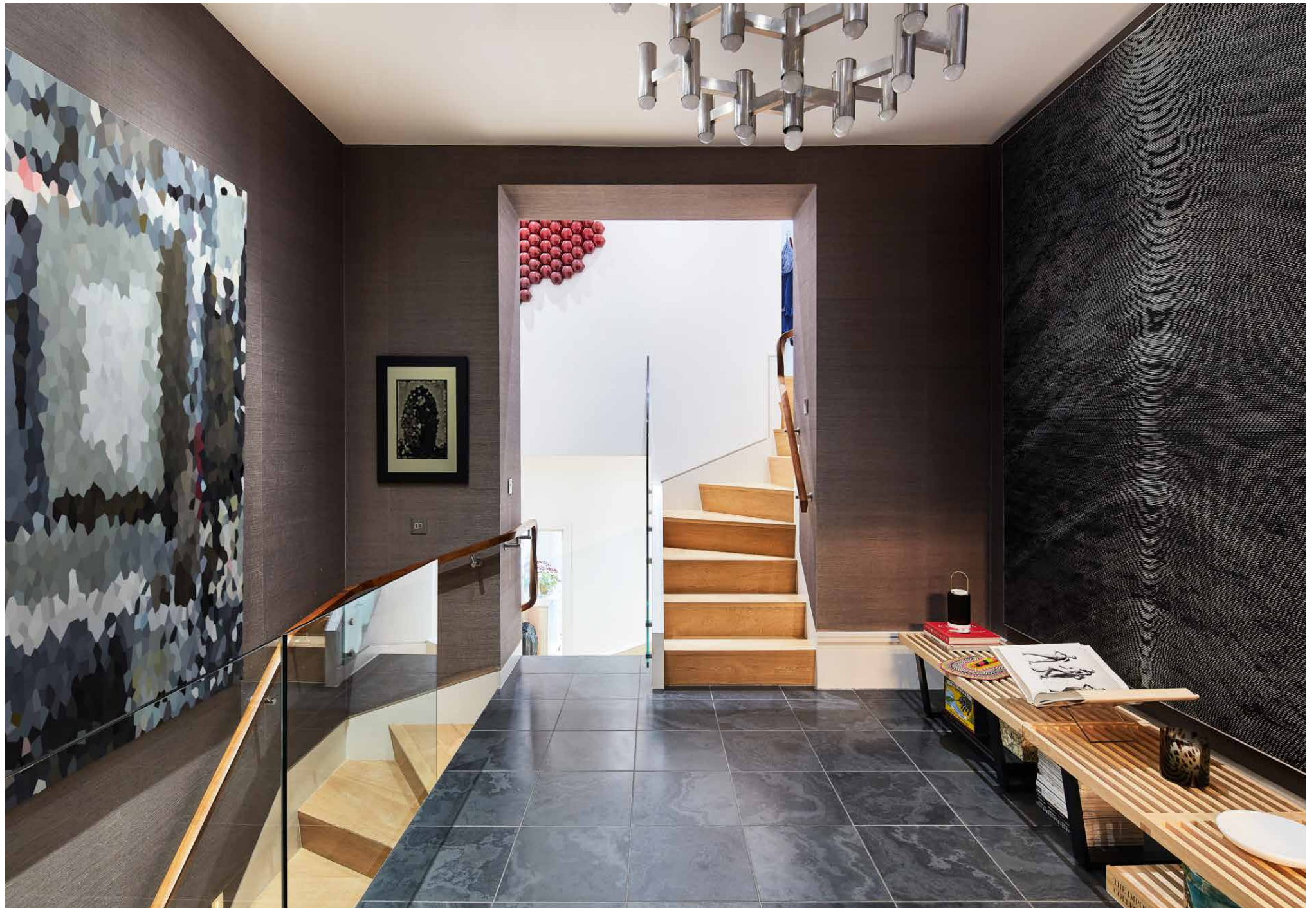
There's a sense of historic elegance to the first-floor reception room. Its expansive footprint is finished with restored parquet flooring, whilst voluminous ceiling heights are enlivened with original decorative cornicing.

Nearly-full-height French windows open to a balcony overlooking the peaceful tree-lined street. Past the living room, formal gatherings play out in the dining room.

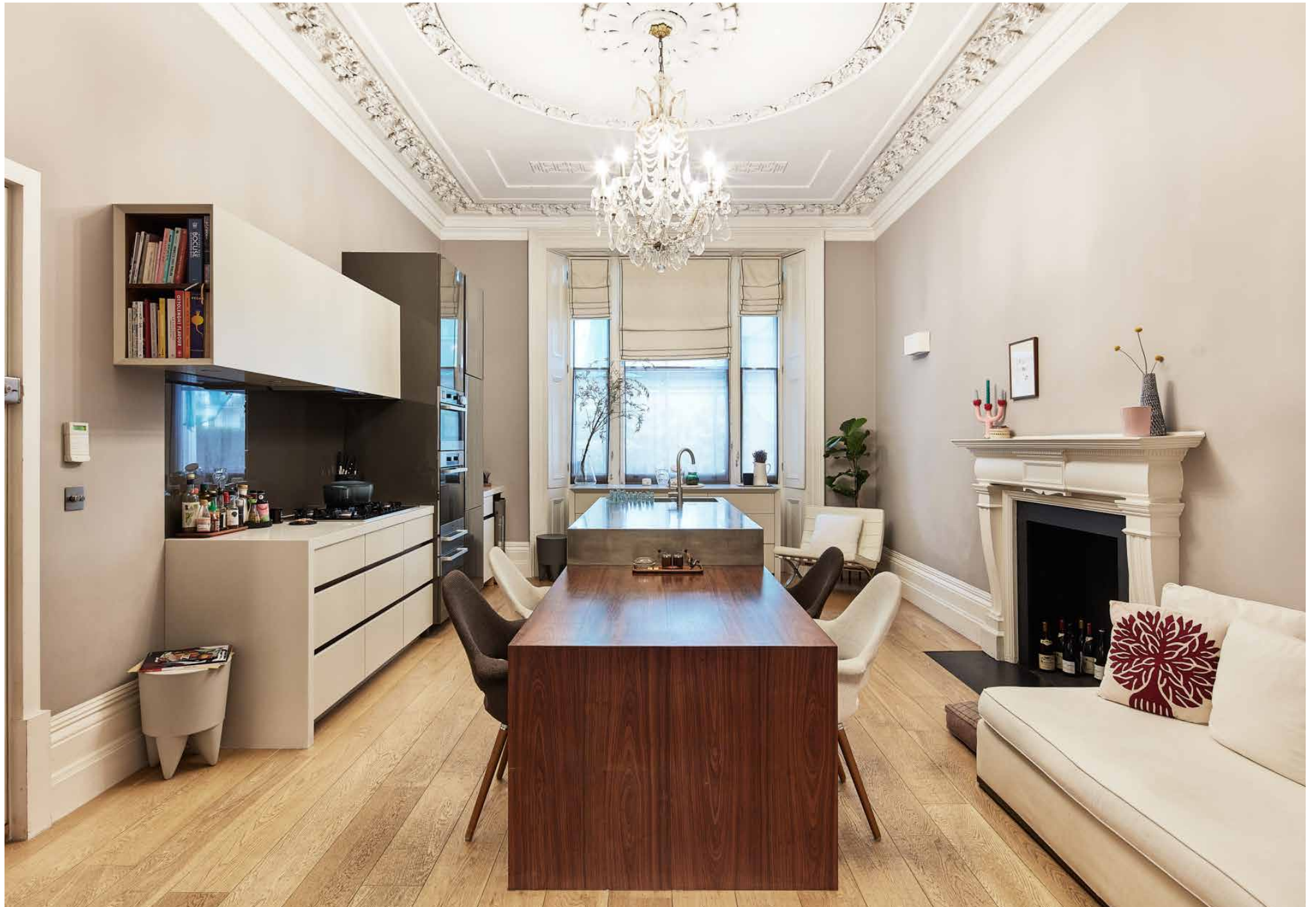










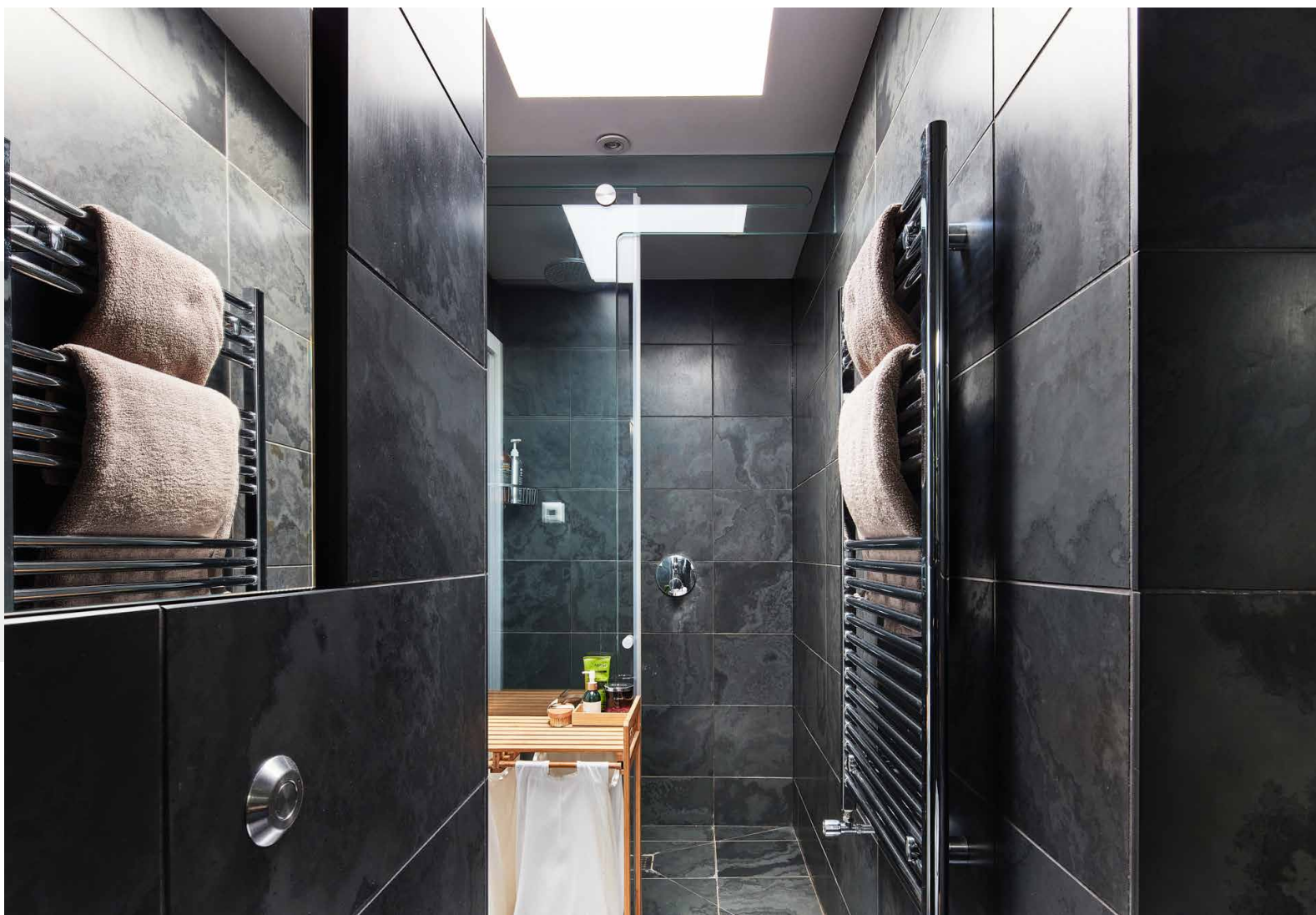




The master bedroom suite enjoys a sense of privacy, accessed via a set of steps from the dining room. The space is infused with morning sunlight, with a pared-back palette for a thoroughly soothing atmosphere. Its floor-to-ceiling wardrobes and a contemporary en suite bathroom pair form with function. Outside, a private terrace is a secluded alfresco spot. Two guest bedrooms are modern affairs with sleek handleless wardrobes, served by a family bathroom and en suite respectively.

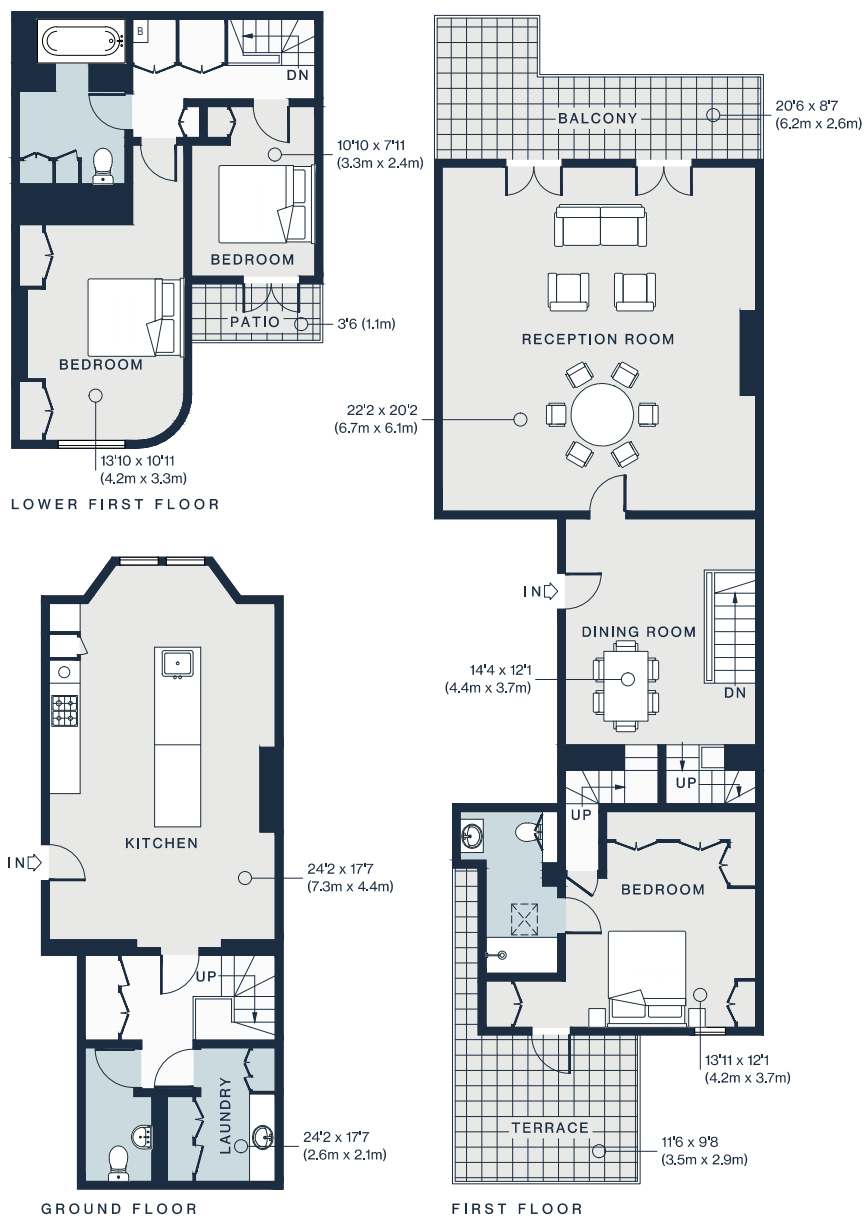












Approx. Gross Internal Area = 1,849 sq ft / 171.8 sq m

Floor plans are for illustrative purposes only and not to scale. Compliant with RICS code of measuring practice.

Property Details

Spacious reception room
Dining room
Contemporary kitchen
Principal bedroom suite
Two guest bedrooms
Family bathroom
Utility room
Private balcony and terrace
City of Westminster

Approx. 1,849 sq ft / 171.8 sq m
EPC - C
Deposit payable -£11,700
Council tax band - D



Location

With Paddington station on your doorstep, Westbourne Terrace has enviable proximity to efficient transport links into the rest of London and further afield. Yet, it's also poised for more meditative city moments: from Paddington Basin, walk along the Little Venice canal and admire the rows of colourful barges and handsome Georgian townhouses. There's plenty of waterside entertainment here; be sure to catch a performance at the Canal Café Theatre or Puppet Theatre Barge. Hyde Park is a short walk southwards, with the Serpentine Lido set for a spot of wild swimming. It's a ten-minute walk to Queensway, currently undergoing an exciting development to include Parisian-style pavilions, calming greenery and a wealth of boutiques.

Specialising in London
and Ibiza's design-led homes

Let's talk
020 7727 1717
lettings@domusnova.com
domusnova.com

The property particulars are a guide not statements. Descriptions, photographs, and plans are for guidance and should be checked by the prospective tenant. The Property is offered "subject to contract and references". No warranties, representations, or Tenancy is given by Domus Nova. Expenses incurred by a prospective tenant will not be reimbursed if the Landlord withdraws prior to the Tenancy Agreement being signed, dated and exchanged and cleared funds received. Furniture and other items shown in a property at viewing may belong to a current tenant. The prospective tenant should verify in writing which fixtures and fittings forms part of the Tenancy. Our full lettings disclaimer together with trading names and our [Privacy Policy](#) is shown on our website