

# DOMUS NOVA

## Westbourne Park Villas

Notting Hill W2

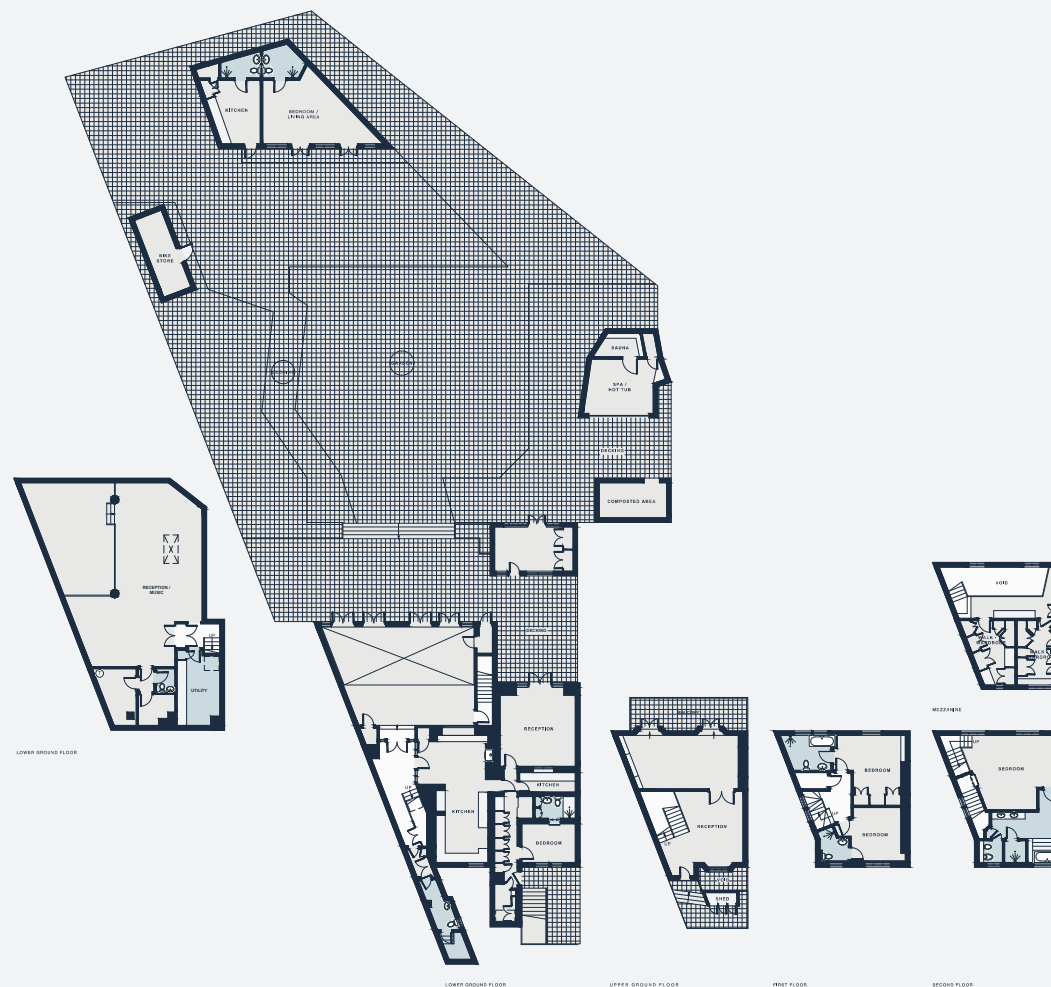
APPROXIMATE GROSS INTERNAL AREA

6,190 sq ft / 575 sq m

020 7221 7817

domusnova.com

LONDON | IBIZA



Floor plans are for illustrative purposes only and not to scale. Compliant with RICS code of measuring practice.