

DOMUS NOVA

Westbourne Park Road

Bayswater W2

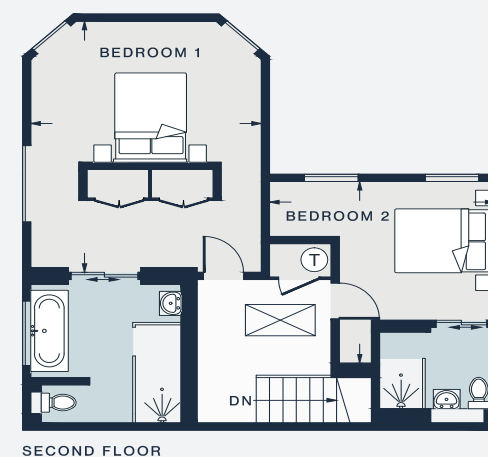
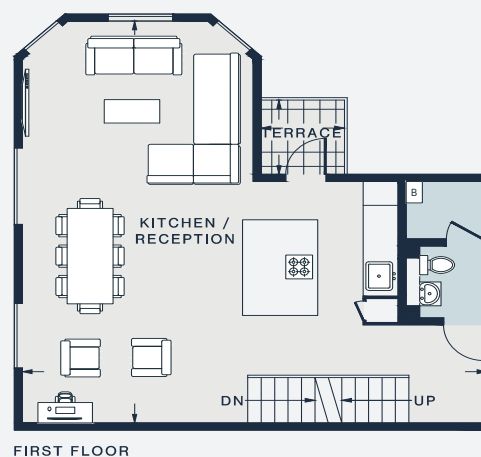
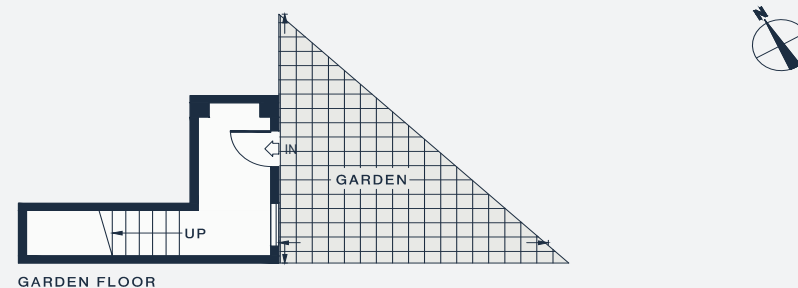
APPROXIMATE GROSS INTERNAL AREA

1,349 sq ft / 125.3 sq m

020 7727 1717

domusnova.com

LONDON | IBIZA



RECEPTION / KITCHEN

28'2 x 27'6 (8.6m x 8.4m)

TERRACE

5'1 x 5'1 (1.5m x 1.5m)

GARDEN

17'3 x 17'1 (5.2m x 5.2m)

BEDROOM 1

17'6 x 14'1 (5.2m x 4.3m)

BEDROOM 2

14'5 x 12'6 (4.3m x 3.8m)

Approx. Gross Internal Area = 1,349 sq ft / 125.3 sq m

Floor plans are for illustrative purposes only and not to scale. Compliant with RICS code of measuring practice. Furniture layouts are indicative only. This property may be furnished, part-furnished or unfurnished. Please refer to your agent for details.