

# DOMUS NOVA

Westbourne Grove

Bayswater W2

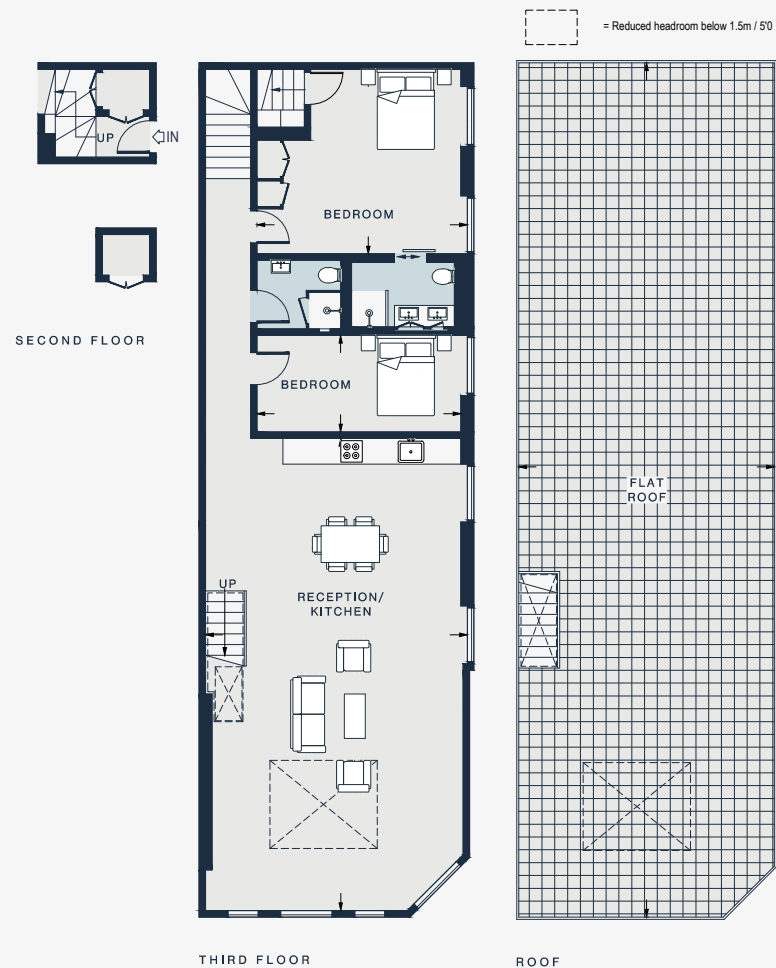
APPROXIMATE GROSS INTERNAL AREA

1319 sq ft / 126.6 sq m

020 7221 7817

domusnova.com

LONDON | IBIZA



RECEPTION / KITCHEN 36'1 x 20'1 (11.0m x 6.1m)	BATHROOM 7'11 x 5'0 (2.4m x 1.5m)	BATHROOM 6'4 x 5'4 (1.9m x 1.6m)
BEDROOM 16'2 x 14'1 (4.9m x 4.3m)	BEDROOM 15'5 x 7'5 (4.7m x 2.2m)	FLAT ROOF 65'5 x 19'7 (19.9m x 6.0m)

Approx. Gross Internal Area = 1319 sq ft / 126.6 sq m

Floor plans are for illustrative purposes only and not to scale. Compliant with RICS code of measuring practice.