

DOMUS NOVA

Westbourne Grove

Notting Hill W11

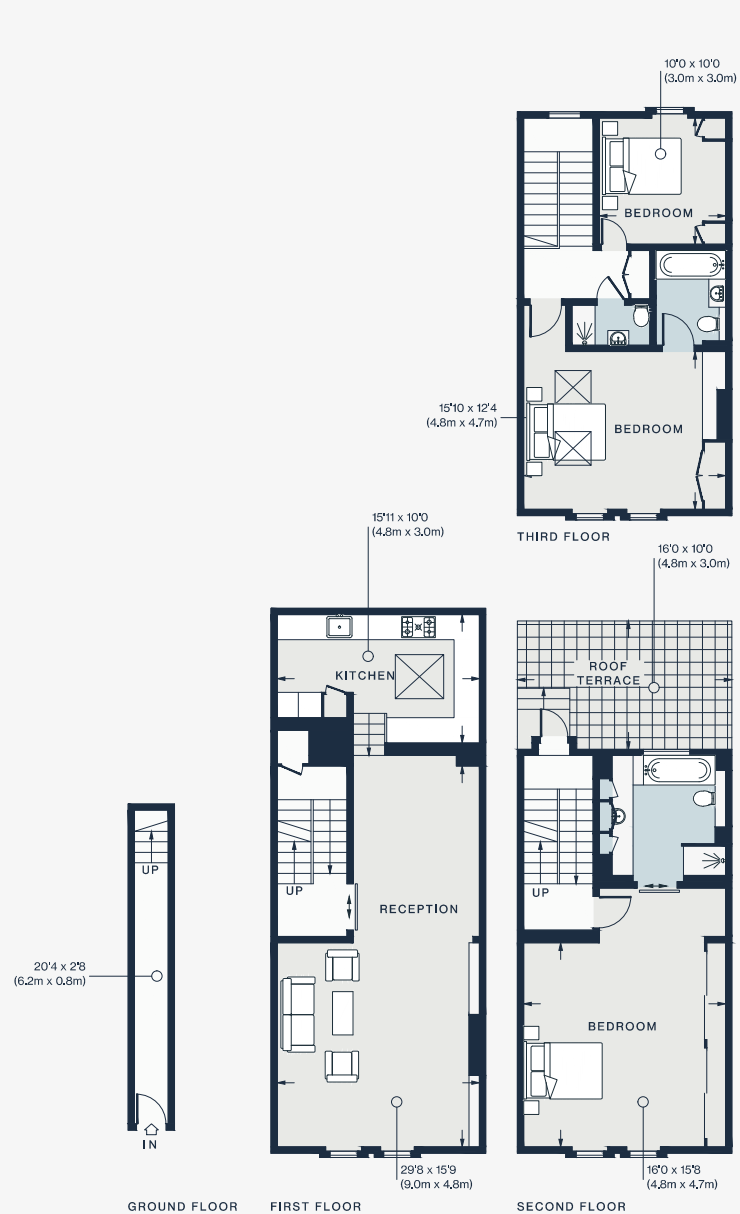
APPROXIMATE GROSS INTERNAL AREA

1,720 sq ft / 159.8 sq m

020 7221 7817

domusnova.com

LONDON | IBIZA



Approx. Gross Internal Area = 1720 sq ft / 159.8 sq m

Floor plans are for illustrative purposes only and not to scale. Compliant with RICS code of measuring practice.