

DOMUS NOVA

Westbourne Grove

Westminster W2

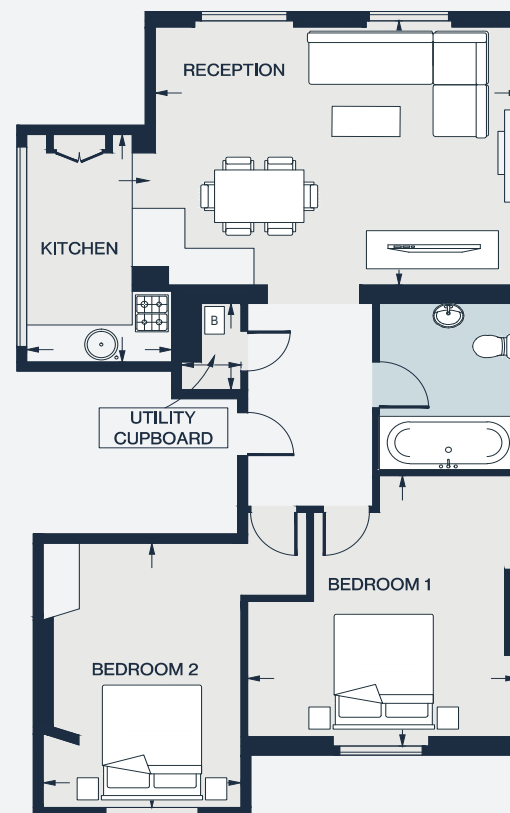
APPROXIMATE GROSS INTERNAL AREA

1096 sq ft / 102 sq m

020 7727 1717

domusnova.com

LONDON | IBIZA



FIRST FLOOR

RECEPTION
18'0 x 14'2 (5.5m x 4.3m)

KITCHEN
12'2 x 7'1 (3.7m x 2.2m)

UTILITY CUPBOARD
4'8 x 3'0 (1.4m x 0.9m)

BEDROOM1
14'4 x 13'5 (4.4m x 4.1m)

BEDROOM2
14'1 x 9'10 (4.3m x 3.0m)

Floor plans are for illustrative purposes only and not to scale. Compliant with RICS code of measuring practice. Furniture layouts are indicative only. This property may be furnished, part-furnished or unfurnished. Please refer to your agent for details.