

DOMUS NOVA

Westbourne Gardens

Bayswater W2

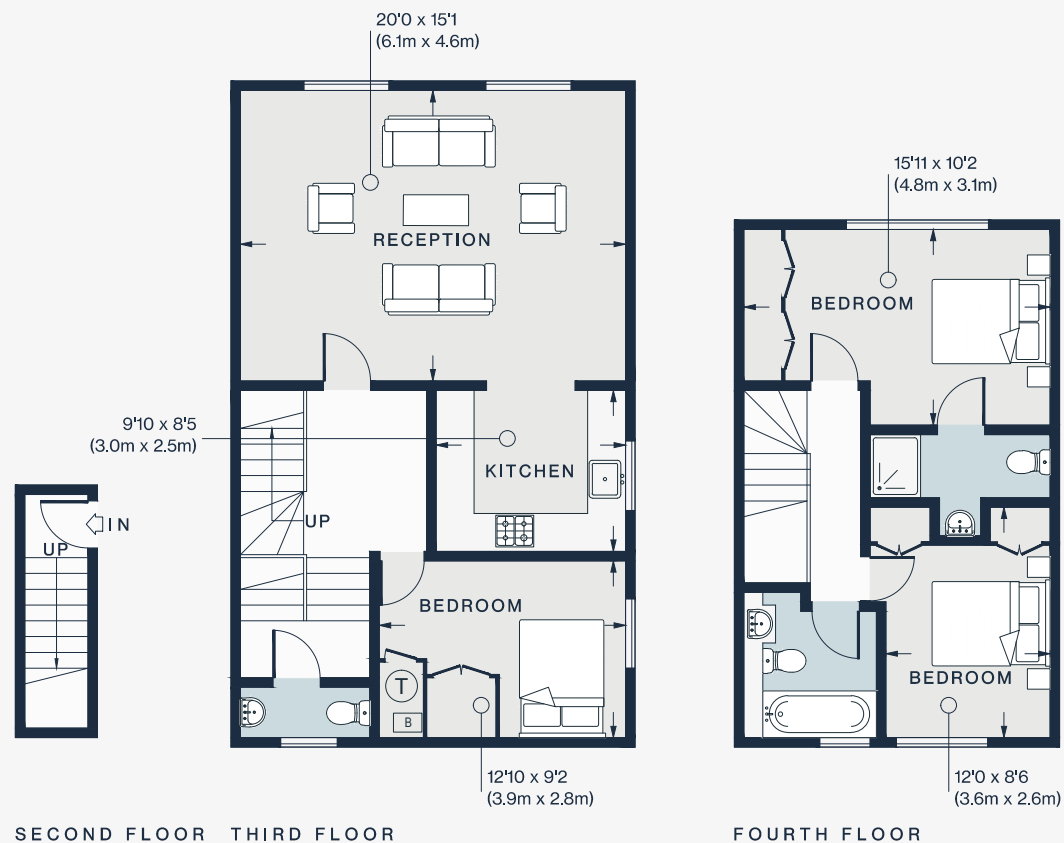
APPROXIMATE GROSS INTERNAL AREA

1122 sq ft / 104 sq m

020 7221 7817

domusnova.com

LONDON | IBIZA



Approx. Gross Internal Area = 1122 sq ft / 104.0 sq m

Floor plans are for illustrative purposes only and not to scale. Compliant with RICS code of measuring practice.