

DOMUS NOVA



Villa Piedra, Cap Martinet

For 12 guests



An idyllic setting on Ibiza's southeast coast, this six-bedroom rental villa enjoys picturesque ocean views from a modern-rustic retreat.

With spectacular views overlooking the bay, Villa Piedra offers a secluded sanctuary without sacrificing proximity to Ibiza Town. Designed by Pablo Peyra Studio, smooth finishes contrast against an earthy palette and textural accents to create a subtly rustic feel to this modern villa.

Through a glass entrance, whitewashed walls and tiles create an airy impression. A more intimate space in the kitchen, light trickles through a transom window. Spot lighting draws warmth from wooden cabinets, while a central island finished in stone offers a cool contrast. Integrated appliances and matte-black accents meld the two together.

Floor-to-ceiling sliding doors lead into a spacious reception room, where Ibicencan textures honour the island's history. Natural stone contrasts the room's clean lines, the adjacent wood-panelled wall recalling the kitchen's warm tones.

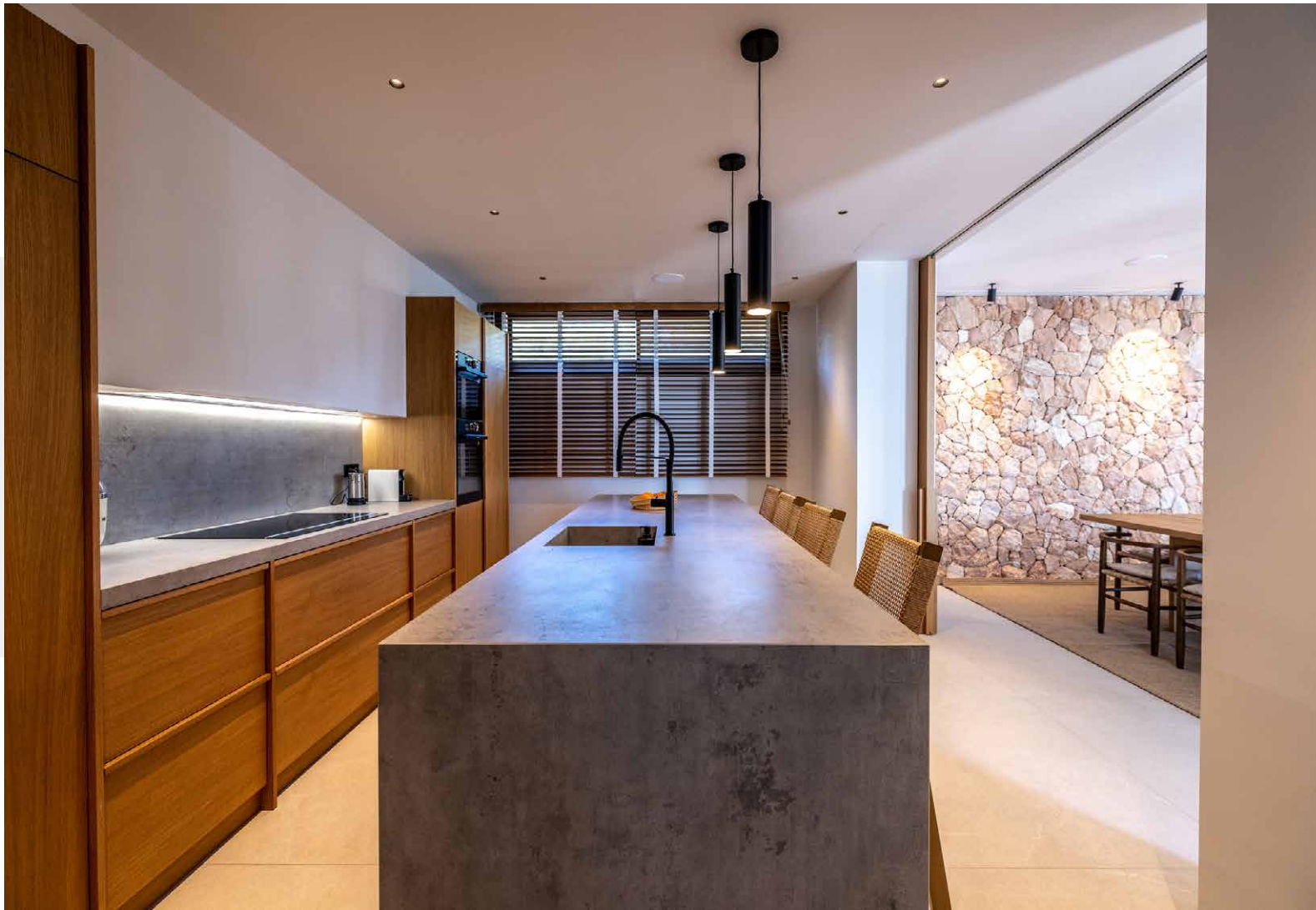
Rays of sunlight filter through glass doors leading outside. A bamboo roof shelters the immediate outdoor area, an intimate space for shade-seeking. To the right, alfresco dining for eight is illuminated by overhanging bamboo lamps. An infinity pool is bordered by integrated seating.







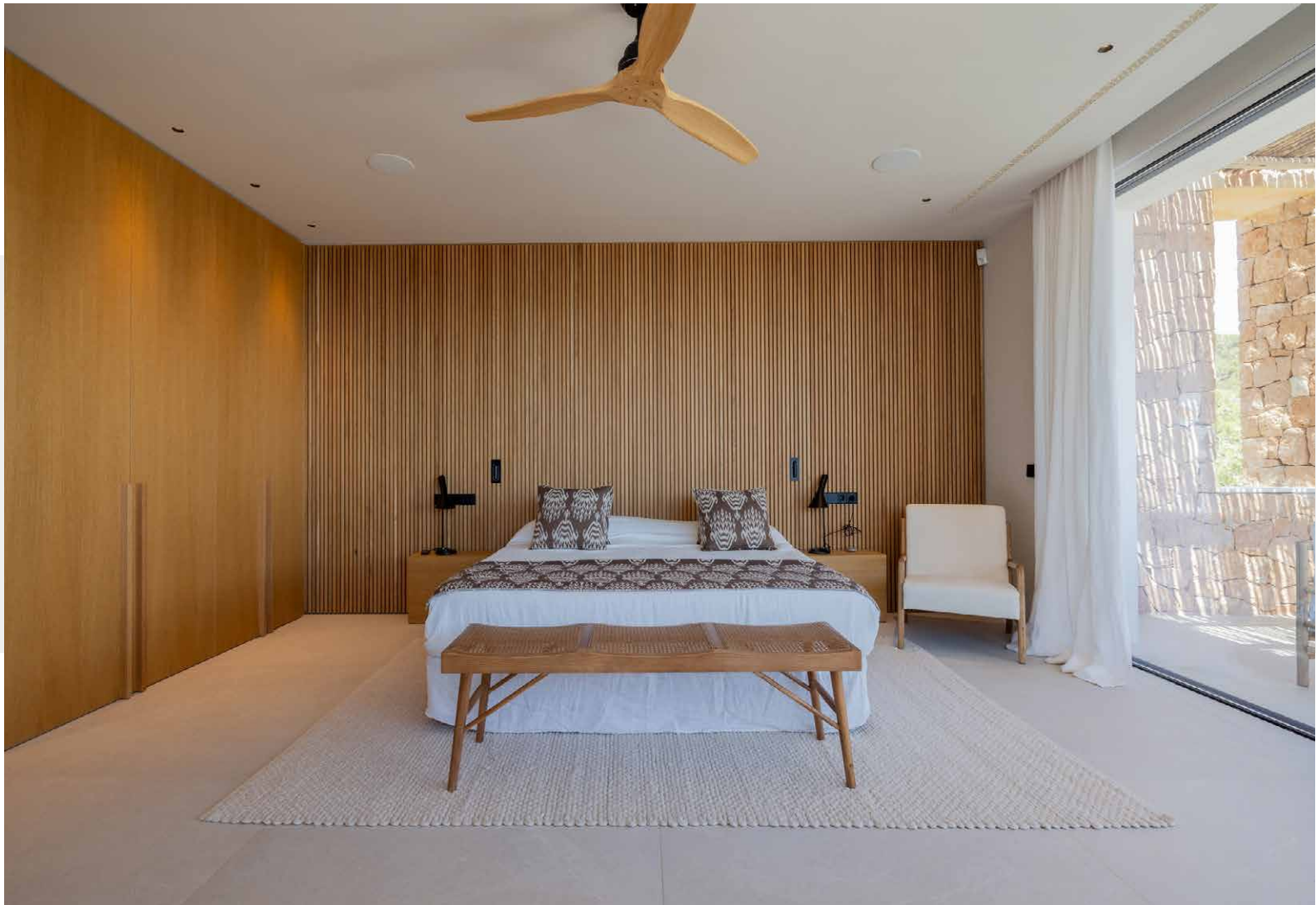




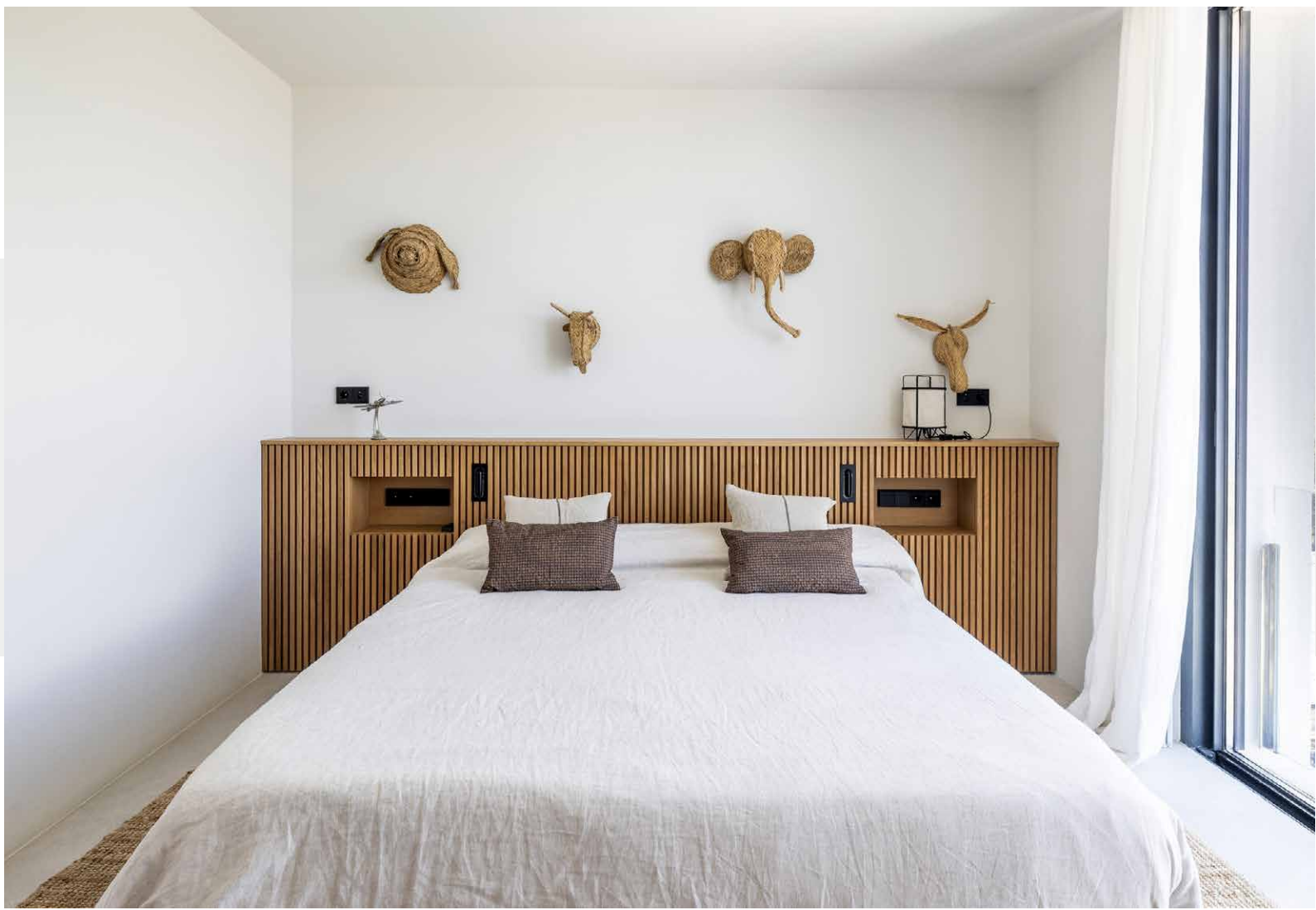
Decked in wooden slat walls and tranquil tones, the principal bedroom suite sits above. Fitted wardrobes blend into the panelling, framing the entrance through to a contemporary en suite bathroom, complete with a dual vanity and walk-in shower. Endless views of the coast are enjoyed from the sheltered private balcony.

Encompassing one wing of the villa, a neutral palette sweeps through four further en suite bedrooms. Full-length glazing in each bedroom provides serene views encompassing the pool and the Mediterranean Sea. The property benefits from an additional sixth bedroom with shared guest bathroom, alongside a Technogym-fitted gym.















Property Details

Sea views
Spacious reception room
Modern kitchen
Principal bedroom suite with private balcony
Four further bedroom suites
One further bedroom with shared guest bathroom
Sheltered outdoor dining area
Infinity pool
Sonos system
Three-car driveway

Tourist License: Included



Location

With its vast ocean views, Villa Piedra offers a peaceful sanctuary just a short drive from Ibiza Town. Wander around UNESCO World Heritage site Dalt Vila or take in more modern wonders at the Contemporary Art Museum of Ibiza. Head to Talamanca Beach or, on lazier days, take a 15-minute walk down to Cala Roja, a secluded natural rock beach with crystal waters. Come night-time, visit waterfront restaurant Sa Punta for inventive Mediterranean cuisine and late-night cocktails.

Driving distances:

Marina Botafoch (5 mins)

Marina Ibiza (8 mins)

Ibiza Town (10 mins)

Ibiza Airport (15 mins)

DOMUS NOVA

Specialising in London
and Ibiza's design-led homes.

Let's talk
+34 871 515 302
ibizarentals@domusnova.com
domusnova.com/ibiza