

DOMUS NOVA



Villa Elevado, Roca Llisa
For 12 guests



An ocean-front villa with unrivalled panoramas. Wake up to sea views. Wind down to glowing sunsets.

Perched at the water's edge, a short walk from the beach, there's nothing between you and the horizon at Villa Elevado.

Gazing out towards Formentera in the distance, this is somewhere to truly escape from it all.

Found within the peaceful pine-forest surrounds of Roca Llisà urbanisation, architect Jaime Serra has created a space that embraces the natural beauty of its setting.

With views this spectacular, outside living is given undivided attention. An infinity pool appears to melt into the ocean. Pergolas cast shade on quiet corners. A dining table for 12 offers front row seats to watch the sun streak the sky pink.

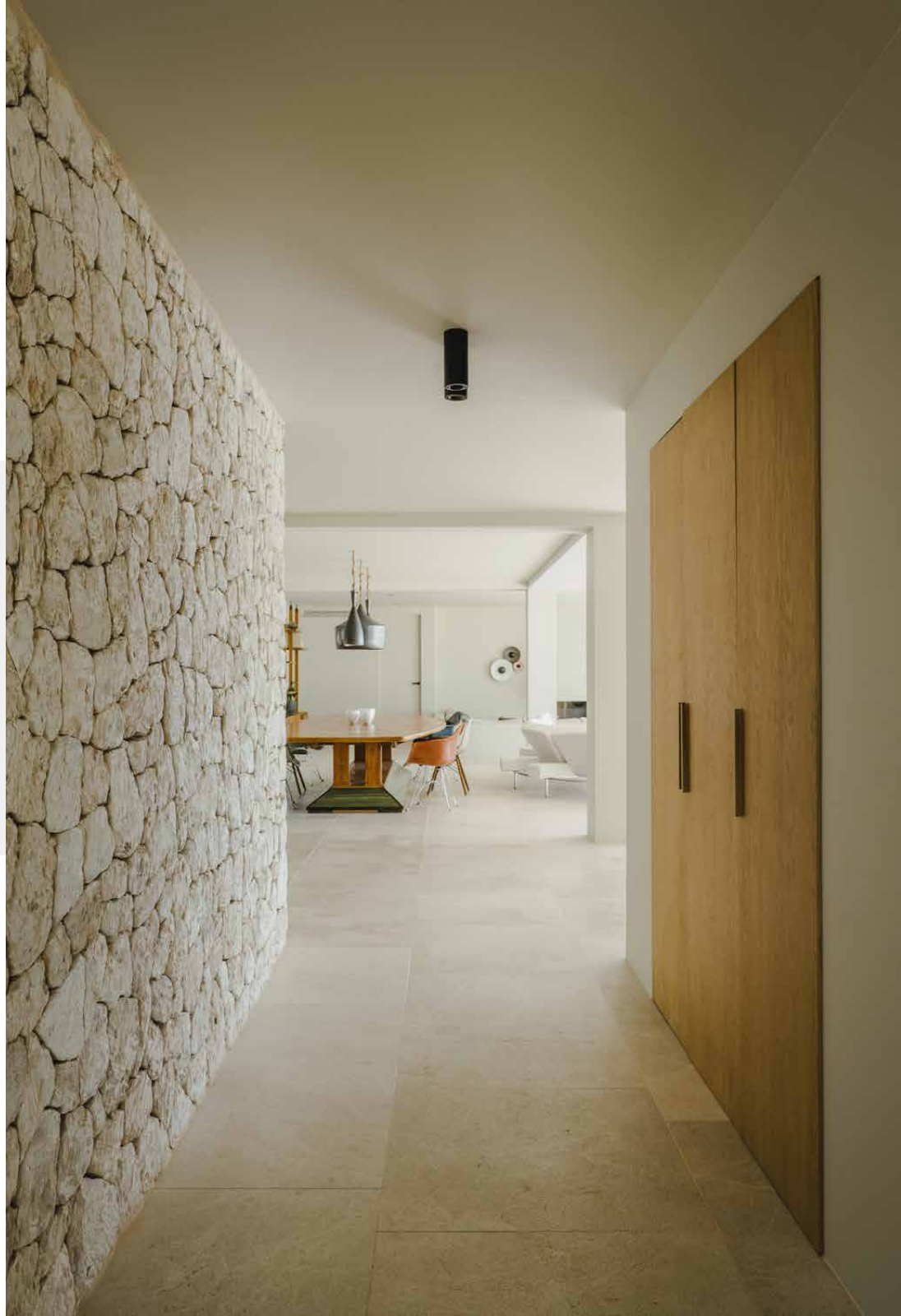
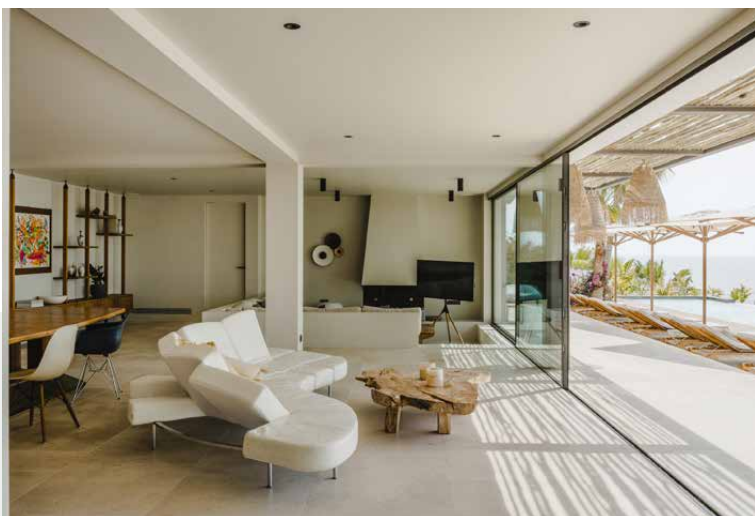


















Scenic backdrops prevail, both inside and out – from the well-equipped al fresco kitchen with fridge and Wolf gas barbecue to its indoor counterpart, where picture windows stretch across three sides. In the open living and dining area, a screen of glass opens up the space to the outside, while a sunken seating area provides a cosy nook for kicking back.

Private terraces and glass-fronted balconies mean each of the six en suite bedrooms also makes the most of the south-facing, 180-degree sea views. Neutral, earthy tones courtesy renowned island-based studio Ibiza Interiors combine with walk-in showers and individual Sonos music systems to accentuate relaxation and wellbeing.















Property Details

- 6 bedrooms
- 6 bathrooms
- Infinity pool
- Spectacular sea and sunset views
- Multiple terraces
- Outdoor kitchen
- Gated community
- Security system and safes
- 5 minute walk to the sea

Tourist License: 2017/019619
Interior Design: Ibiza Interiors
Architect: Jaime Serra



Location

With its uninterrupted views and peaceful hilltop position, Villa Elevado offers a gateway to Ibiza's more tranquil side. Casually stroll just five minutes to Cala Espart or while away the days stretched out on the sands of picturesque Cala Llonga, hopping between the restaurants and bars of vibrant Jesús or walking along the seafront promenade at Santa Eulalia. If you want to turn up the tempo, Ibiza Town's buzzing nightlife and culture are within easy reach.

Ibiza airport (17 mins)

Ibiza Town (14 mins)

Cala Llonga (9 mins)

Jesús (11 mins)

Santa Eulalia (15 mins)

Specialising in London
and Ibiza's design-led homes.

Let's talk
+34 871 515 302
ibizarentals@domusnova.com
domusnova.com/ibiza