

DOMUS NOVA



Villa Celestial, Cala Tarida

For 8 guests



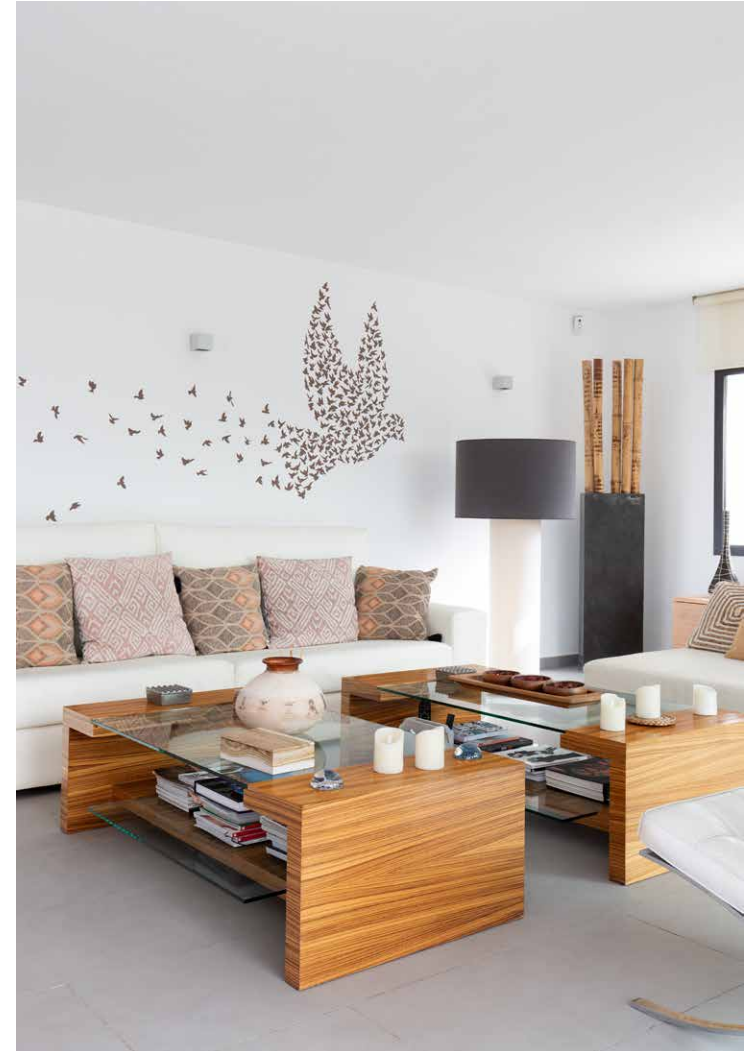
Lush Ibicencan countryside and views of the sunset over the Mediterranean Sea define life at this four-bedroom, contemporary villa in Cala Tarida.

Surrounded by the Ibicencan countryside, Vista Celestial is a luxury four-bedroom, west-facing, contemporary villa that overlooks the the Mediterranean Sea. Exceptionally secluded, the villa is the ideal place for guests who are looking for the upmost privacy on their getaway. Situated at the heart of this wonderful home is an impressive 6x8 metre infinity pool with sweeping views over the fragrant pine and eucalyptus forest – perfect for morning swims before soaking up some rays on one of the many sunbeds set around the pool.

With endless outdoor zones to enjoy, Villa Celestial has multiple terraces, outdoor dining areas and chill out zones where you can make the most of the warm summer evenings and sunset views.







“

Multiple terraces, outdoor dining areas and chill out zones where you can make the most of the warm summer evenings and sunset views.











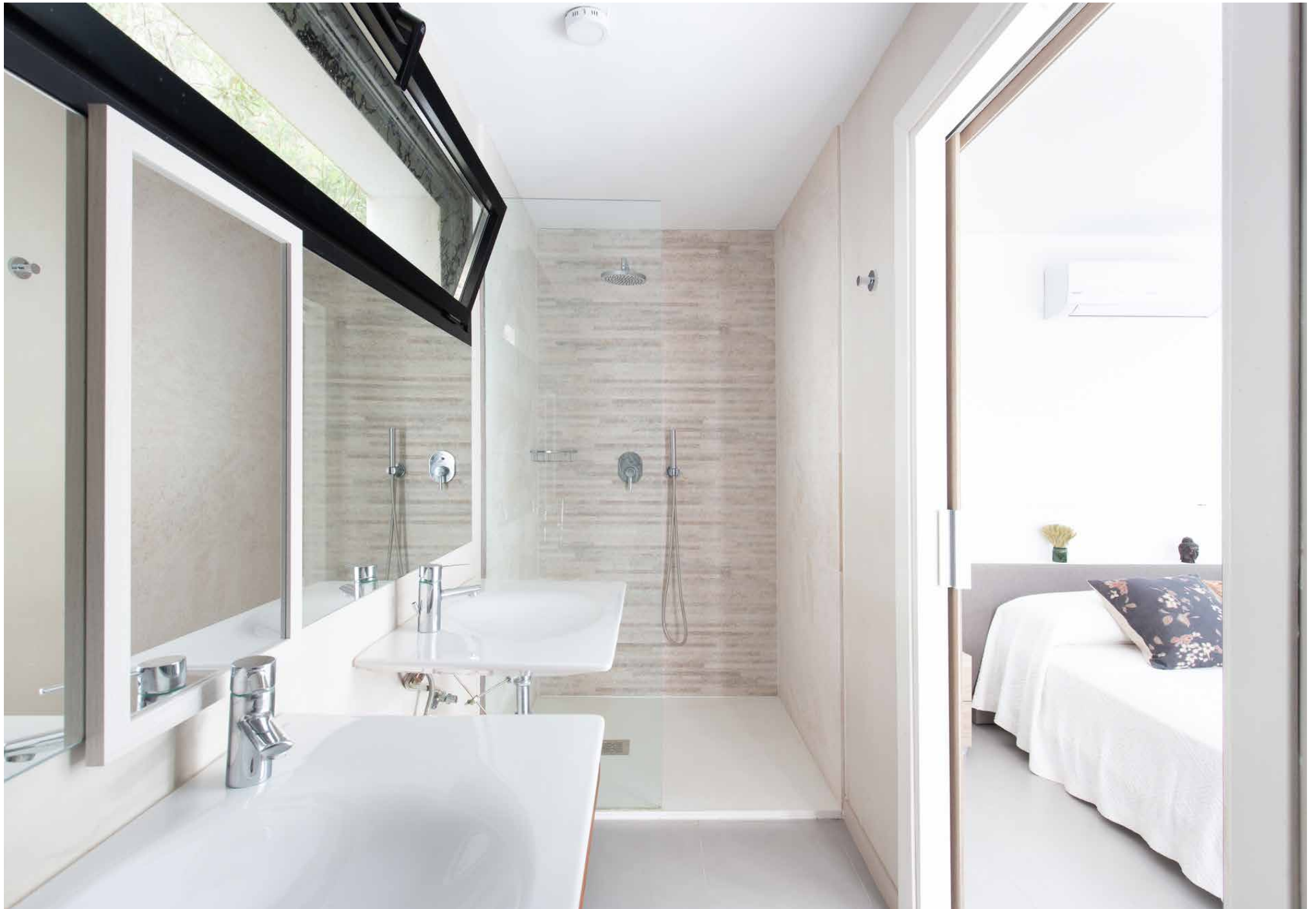
The beautiful contemporary interiors of the open-plan reception space define modern luxury living. Cool, calm and inviting, with large glass sliding doors opening onto a fantastic terrace and with far reaching views over Cala Tarida.

The large master bedroom suite – with cool stone floors, contemporary fireplace and seating area – has direct access to a private terrace with sea views. The three double bedrooms, all with private bathrooms, each also has its own terrace area.

Outside living is a priority at Villa Celestial: soak up the sun whilst enjoying the spectacular views of neighbouring islands of Conillera, S'Espartar and Es Vedra. The alfresco-dining area is perfect for enjoying BBQ dinners with family and friends, whilst watching the sunset.

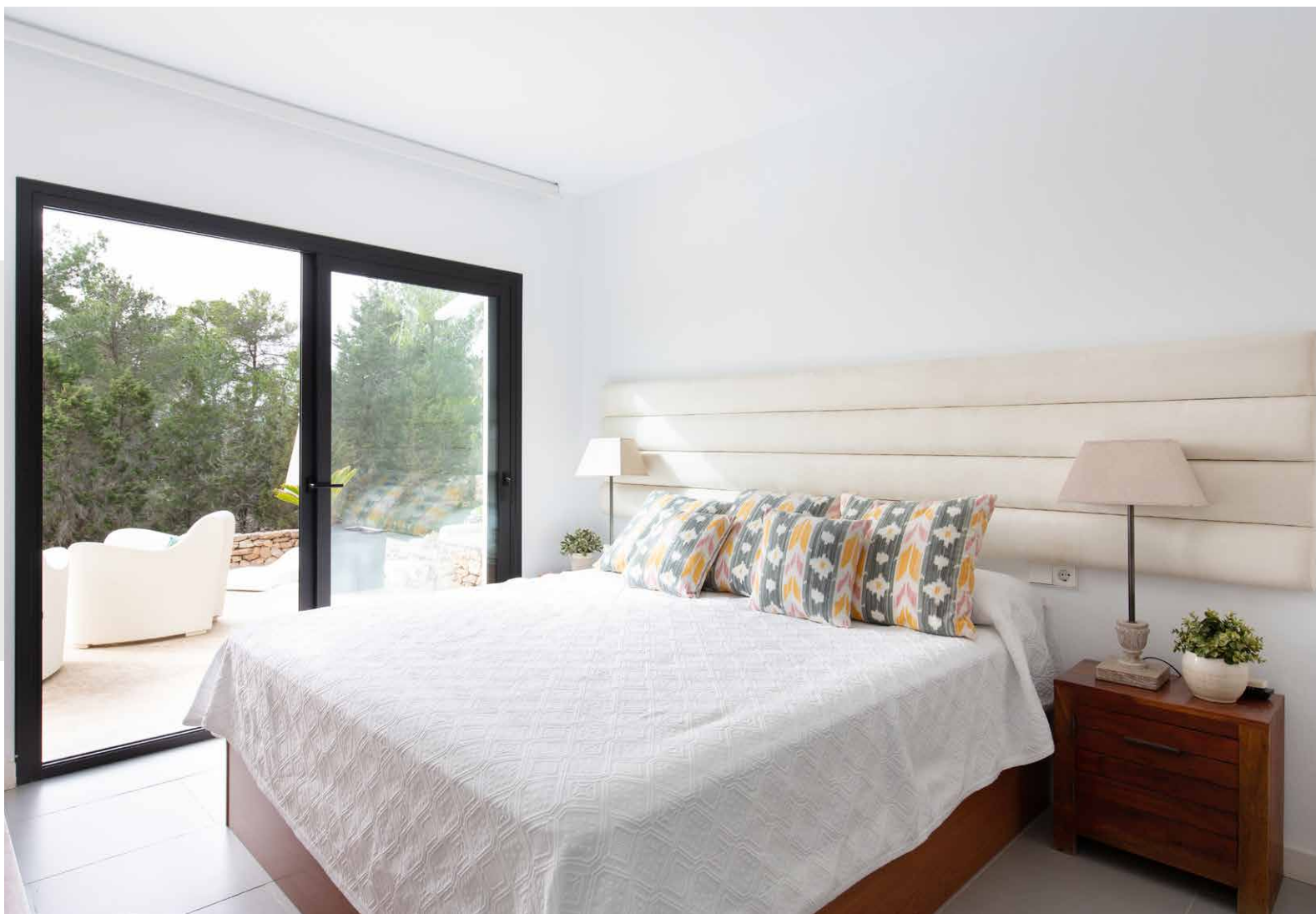














Property Details

Master Bedroom suite with private terrace
3 guest bedrooms with bathrooms and terraces
Fully equipped kitchen
Open-plan living area
Dining room for up to 8 guests
Infinity pool
Outdoor dining and seating areas
BBQ grill
Alfresco dining area
Direct sunset-facing sea views

Tourist License: ET-0458-E



Location

Surrounded by pine-covered hills and nestled in a sandy, sheltered bay on the west coast of the island is Cala Tarida. Cala Tarida is situated close to the many amenities found in San Antonio including an array of restaurants, bars and night clubs. In comparison, Cala Tarida itself is a tranquil alternative. With a supermarket and a handful of shops, this resort is great for sunbathing on the beautiful beaches. Ibiza airport is 20-minute drive away.

Ibiza Airport (23 mins)

Ibiza Town (28 mins)

Cala Tarida (3 mins)

San Jose (5 mins)

DOMUS NOVA

Specialising in London
and Ibiza's design-led homes.

Let's talk
+34 871 515 302
hello@domusnovaibiza.com
domusnovaibiza.com