

DOMUS NOVA



Sutherland Avenue W9
£1,395,000



Behind an elegant façade in Maida Vale sits a stylish lateral apartment. Light is channelled through the plan along a hallway from which a sliding door reveals an open-plan living area. At one end, the kitchen wears a mid-century modern look with expansive wooden cabinetry. A large terrazzo counter zones the room, with a butler sink engineered into the wooden worktop.

Coving flows along the high ceiling from the kitchen into the living area. The fireplace forms a centrepiece while a whitewashed, wood-clad bay window welcomes sunlight into the space. French doors open to a private patio garden, with steps that lead to an oasis of greenery. This rejuvenating space is Sutherland North Garden, shared with neighbouring homes.

The three double bedrooms are minimalist in design and tranquil in feel. A large southeast-facing bay window illuminates the principal bedroom. This space features natural tones, integrated storage and an ensuite bathroom accessed via a walk-in wardrobe. The front bedroom has an adjoining study which could be reimagined as a dressing room. The apartment also features a utility room, a separate study, and a family bathroom with floor-to-ceiling tiling.

An uplifting family home in leafy Maida Vale, this modern apartment is a contemporary canvas waiting for you to leave your mark.

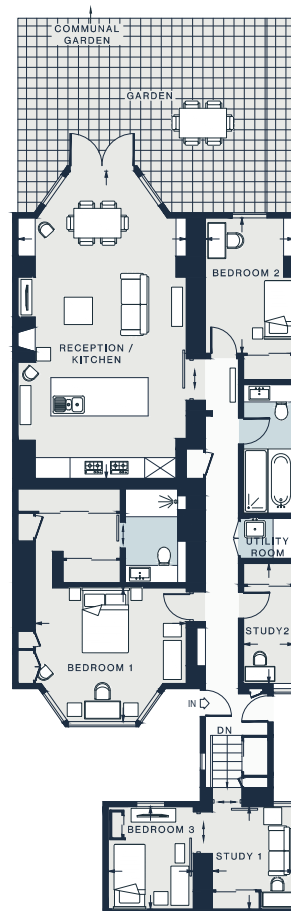












RECEPTION/ KITCHEN
29'0 x 15'11 (8.8m x 4.8m)

STUDY 2
11'6 x 4'9 (3.5m x 1.4m)

BEDROOM 2
12'10 x 8'3 (3.9m x 2.5m)

STUDY 1
9'8 x 7'10 (2.9m x 2.3m)

BEDROOM 1
14'4 x 12'7 (4.3m x 3.8m)

BEDROOM 3
9'7 x 8'0 (2.9m x 2.4m)

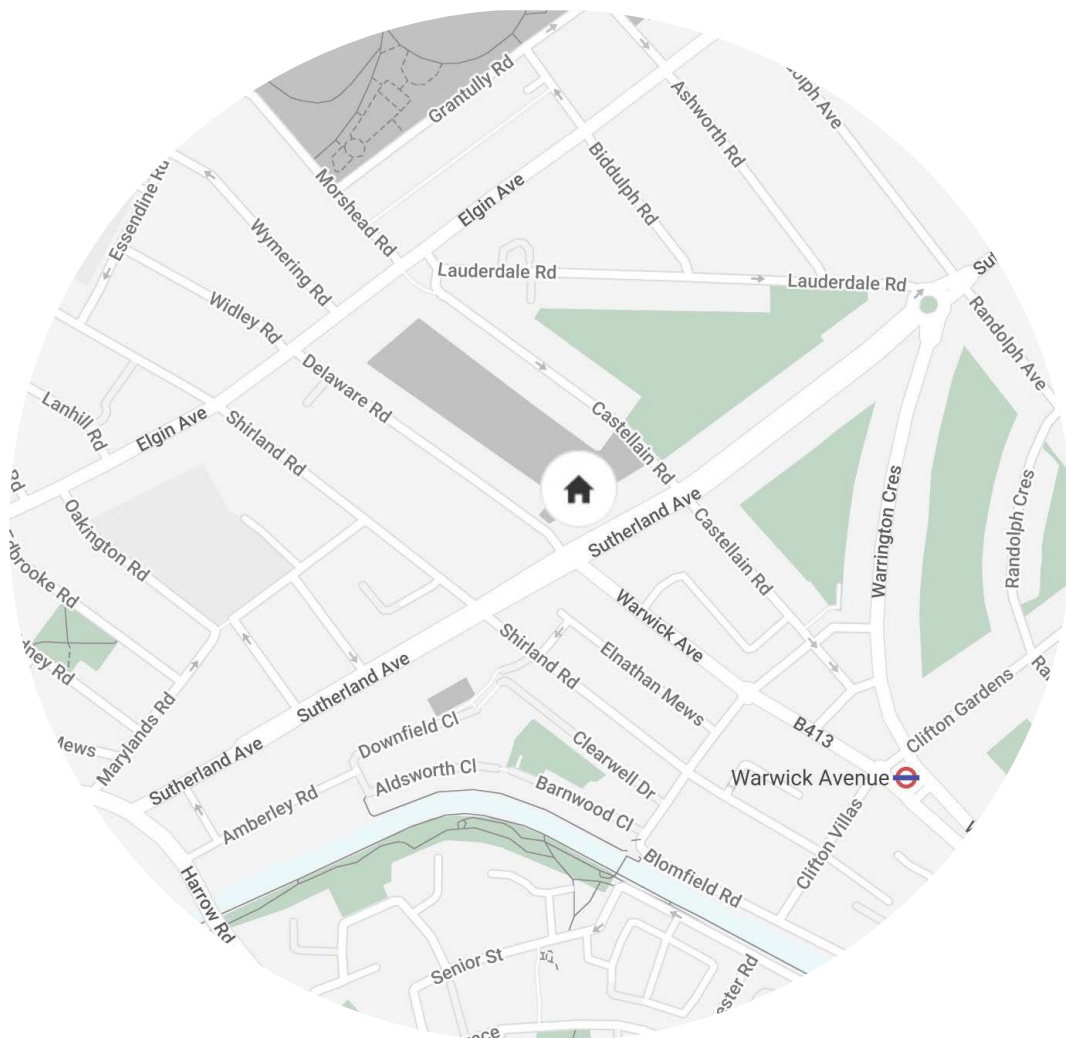
Approx. Gross Internal Area = 1,459 sq ft / 135.6 sq m

Floor plans are for illustrative purposes only and not to scale. Compliant with RICS code of measuring practice.

Property Details

Open-plan kitchen and reception room
Principal bedroom suite with walk-in wardrobe
Guest bedroom with study
One further bedroom
Additional study
Family bathroom
Private patio garden
Access to communal gardens
City of Westminster

Approx. 1,459 sq ft / 135.6 sq m
EPC - C
Council Tax Band - F



Location

Set in the heart of residential Maida Vale, Sutherland Avenue is a quiet street just around the corner from the legendary BBC recording studio. Within a short stroll are Little Venice and Regent's Canal. Warwick Avenue Station is a five-minute walk away and provides access to central London and beyond. When flowers are in bloom, head to Rembrandt Park followed by coffee at The Waterside Café. Complete a day out with live performances at Canal Café Theatre or the Puppet Theatre Barge.

Warwick Avenue – 5 mins (Bakerloo)

Specialising in London
and Ibiza's design-led homes

Let's talk
020 7221 7817
sales@domusnova.com
domusnova.com

The particulars above are a guide, not an offer or contract. Descriptions, photographs and plans are not statements or representations of fact. Measurements are approximate and not to scale. Prospective purchasers must verify the accuracy of the information within the particulars. Domus Nova does not give any representations or warranties; nor represent the Seller legally. Domus Nova has no liability, for any costs, losses or expenses incurred by the Seller or a prospective buyer relating to the sales and buying transaction.

Our Sales Disclaimer, trading names and privacy policy on how your data is processed and used is found in full on our website in our [Privacy Statement](#).

© Domus Nova 2023. All rights reserved.