

# DOMUS NOVA

Bassett Road

Bayswater W2

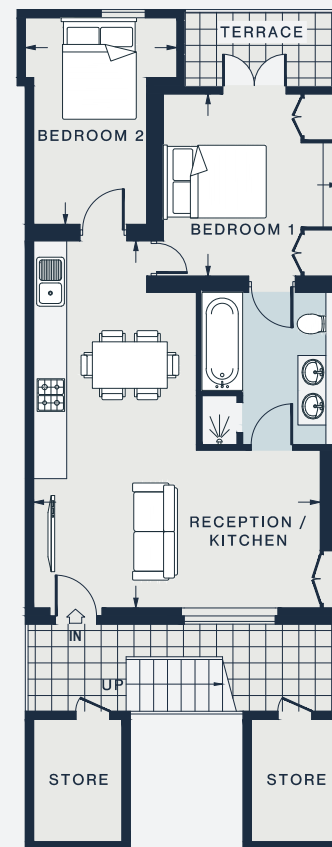
APPROXIMATE GROSS INTERNAL AREA

898 sq ft / 83.4 sq m

020 7727 1717

domusnova.com

LONDON | IBIZA



LOWER GROUND FLOOR

RECEPTION / KITCHEN

22'2 x 17'0 (6.7m x 5.2m)

BEDROOM 1

11'0 x 10'6 (3.4m x 3.2m)

BEDROOM 2

12'7 x 9'1 (3.8m x 2.8m)

Floor plans are for illustrative purposes only and not to scale. Compliant with RICS code of measuring practice.