

DOMUS NOVA

St Quinttin Avenue

North Kensington W10

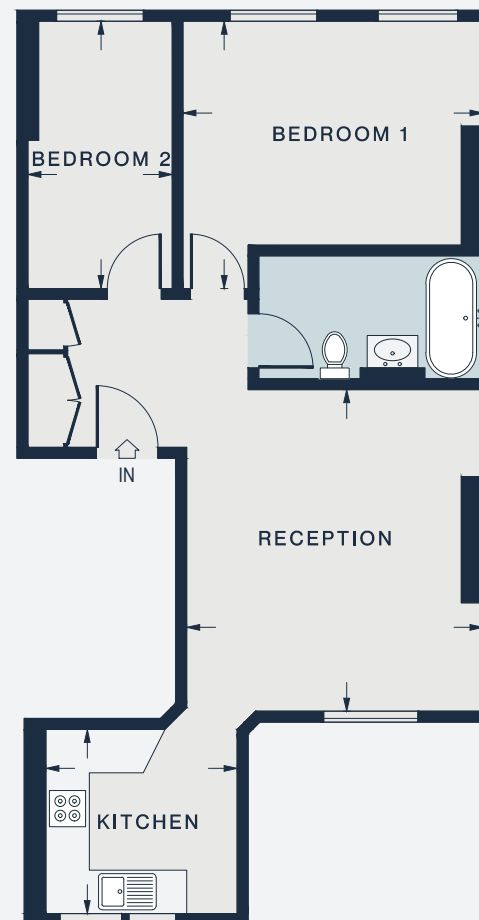
APPROXIMATE GROSS INTERNAL AREA

635 sq ft / 59 sq m

020 7221 7817

domusnova.com

LONDON | IBIZA



FIRST FLOOR

RECEPTION
14'8 x 13'6 (4.5m x 4.1m)

BEDROOM 1
13'7 x 12'2 (4.1m x 3.7m)

KITCHEN
8'9 x 8'5 (2.7m x 2.6m)

BEDROOM 2
12'2 x 6'6 (3.7m x 2.0m)

Floor plans are for illustrative purposes only and not to scale. Compliant with RICS code of measuring practice.