

DOMUS NOVA

St Marks Road

North Kensington W10

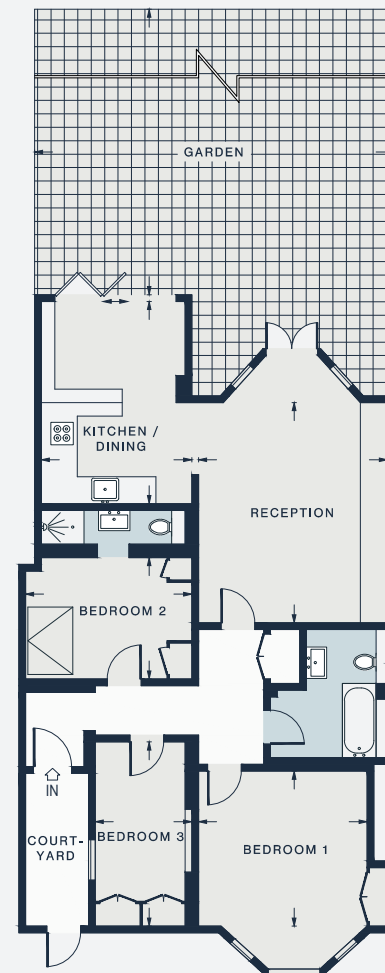
APPROXIMATE GROSS INTERNAL AREA

1,048.4 sq ft / 97.4 sq m

020 7221 7817

domusnova.com

LONDON | IBIZA



RECEPTION 16'2 x 13'9 (4.9m x 4.2m)	BEDROOM 1 12'4 x 11'0 (3.7m x 3.3m)
KITCHEN / DINING 14'9 x 11'2 (4.5m x 3.4m)	BEDROOM 2 12'1 x 9'1 (3.7m x 2.7m)
GARDEN 52'2 x 25'7 (15.9m x 7.8m)	BEDROOM 3 13'9 x 7'1 (4.2m x 2.1m)

Floor plans are for illustrative purposes only and not to scale. Compliant with RICS code of measuring practice.