

DOMUS NOVA

Queens Court

Bayswater W2

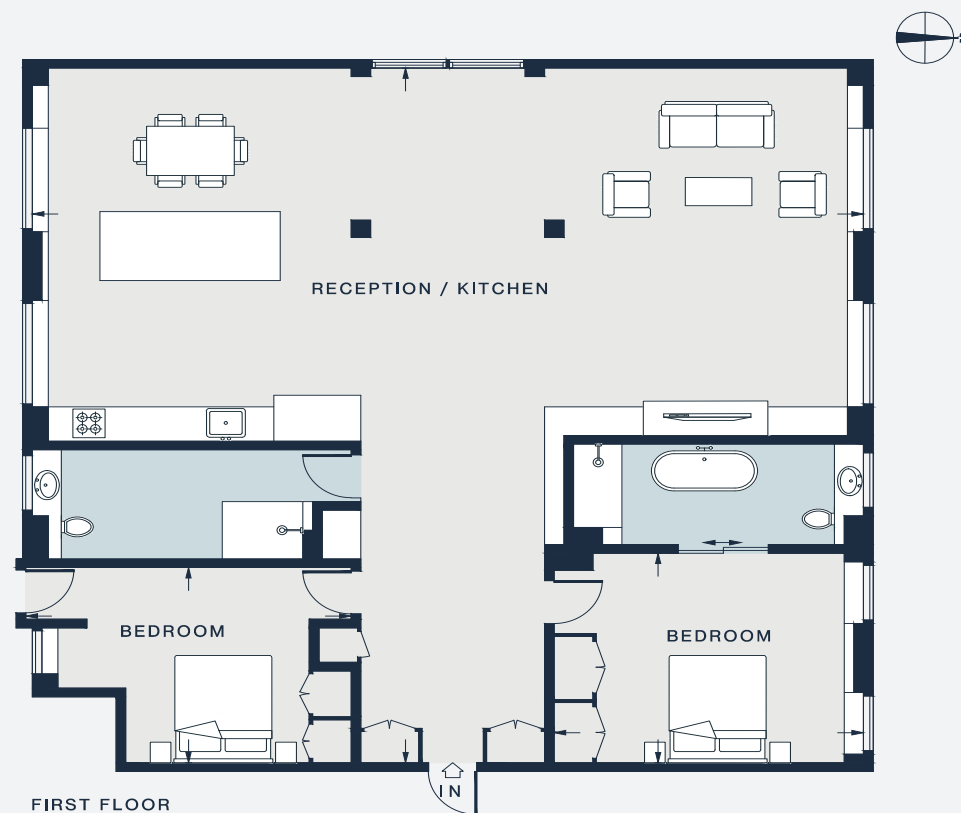
APPROXIMATE GROSS INTERNAL AREA

1,671 sq ft / 155.2 sq m

020 7727 1717

domusnova.com

LONDON | IBIZA



RECEPTION / KITCHEN
42'4 x 39'8 (12.9m x 12.1m)

BEDROOM
15'9 x 12'0 (4.8m x 3.6m)

BEDROOM
16'7 x 11'0 (5.0m x 3.4m)

Approx. Gross Internal Area = 1671 sq ft / 155.2 sq m

Floor plans are for illustrative purposes only and not to scale. Compliant with RICS code of measuring practice. Furniture layouts are indicative only. This property may be furnished, part-furnished or unfurnished. Please refer to your agent for details.