

DOMUS NOVA

Powis Square

Notting Hill W11

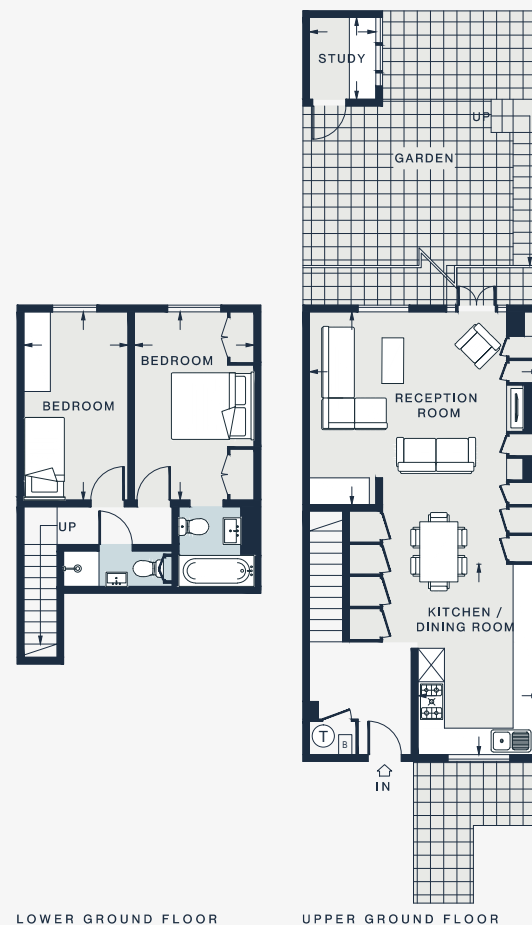
APPROXIMATE GROSS INTERNAL AREA

949 sq ft / 88.2 sq m

020 7221 7817

domusnova.com

LONDON | IBIZA



RECEPTION 17'1 x 14'4 (5.2m x 4.3m)	BEDROOM 14'0 x 8'11 (4.2m x 2.7m)	STUDY 6'0 x 5'0 (1.8m x 1.5m)
KITCHEN / DINING 14'1 x 9'0 (4.3m x 2.7m)	BEDROOM 13'11 x 7'11 (4.2m x 2.4m)	

Approx. Gross Internal Area = 949 sq ft / 88.2 sq m

Floor plans are for illustrative purposes only and not to scale. Compliant with RICS code of measuring practice.