

# DOMUS NOVA

Pottery Lane

Notting Hill W11

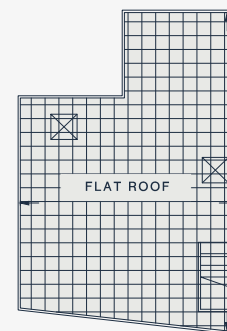
APPROXIMATE GROSS INTERNAL AREA

580 sq ft / 53.9 sq m

020 7221 7817

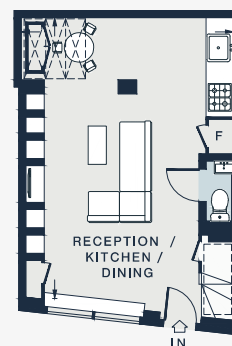
domusnova.com

LONDON | IBIZA

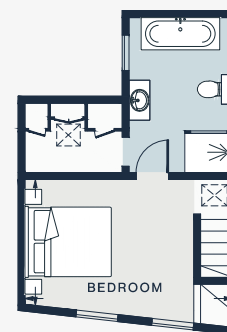


FLAT ROOF

FLAT ROOF



GROUND FLOOR



FIRST FLOOR

RECEPTION / KITCHEN / DINING

19'11 x 15'1 (6.6m x 4.6m)

BEDROOM

14'8 x 10'6 (4.4m x 3.2m)

FLAT ROOF

21'9 x 15'0 (6.6m x 4.5m)

Approx. Gross Internal Area = 580 sq ft / 53.9 sq m

Floor plans are for illustrative purposes only and not to scale. Compliant with RICS code of measuring practice.