

# DOMUS NOVA

Pottery Lane

Holland Park W11

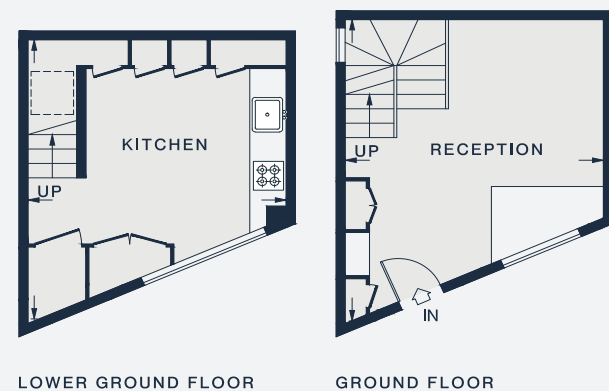
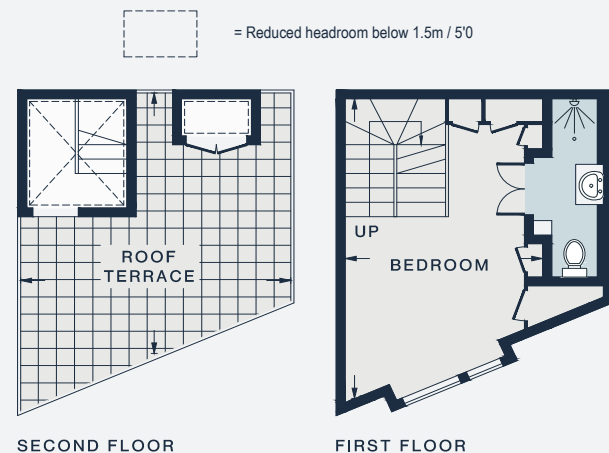
APPROXIMATE GROSS INTERNAL AREA

638 sq ft / 59.3 sq m

020 7727 1717

domusnova.com

LONDON | IBIZA



RECEPTION  
17'7 x 14'1 (5.3m x 4.2m)

BEDROOM  
17'1 x 10'11 (5.2m x 3.3m)

KITCHEN  
16'4 x 13'8 (4.9m x 4.1m)

ROOF TERRACE  
18'1 x 14'8 (5.5m x 4.4m)

Floor plans are for illustrative purposes only and not to scale. Compliant with RICS code of measuring practice.  
Furniture layouts are indicative only. This property may be furnished, part-furnished or unfurnished. Please refer to your agent for details.