

# DOMUS NOVA



Portobello Road W10

£1,950,000



With pioneering vision by architecture studio Cubic Studios, this two-bedroom triplex apartment is awe-inspiring in its spatial innovation, tactile material palette and plethora of light channels.

Enter the first-floor living space, where sash windows have been deftly engineered into triple-height ceiling voids. Reams of light pour in, accentuating the concrete walls with stainless steel wainscoting that lead into the kitchen beyond. Vertical timber cabinets juxtapose with stone worktops and laser-cut metal shelving; this industrial body of materials is softened with light that filters through a skylight and trio of black-framed windows.

A three-metre-high stairwell sets the scene for bold urban engineering. Oversized copper pipes and a black steel beam stretch upwards, emphasising the voluminous aspect. The staircase's concrete treads are paired with a clean-line glass balustrade, making a striking impression as you head to the bedrooms upstairs.















The principal bedroom suite capitalises on its third-floor vantage point, illuminated through a series of rooflights and sash windows. Its pared-back tones lend attention to considered design details – a wall of bespoke storage and metallic radiators. Behind a sliding door, an en suite bathroom is defined by its free-standing copper bath, complete with warm LED underlighting. Minimalism ensues in the guest bedroom whilst attention is drawn to its fenestration: in the ceiling, glazing stretches upwards through a void; in the floor, a steel and glass-framed prism allows sunlight from the below storey's sash window to brighten the room.

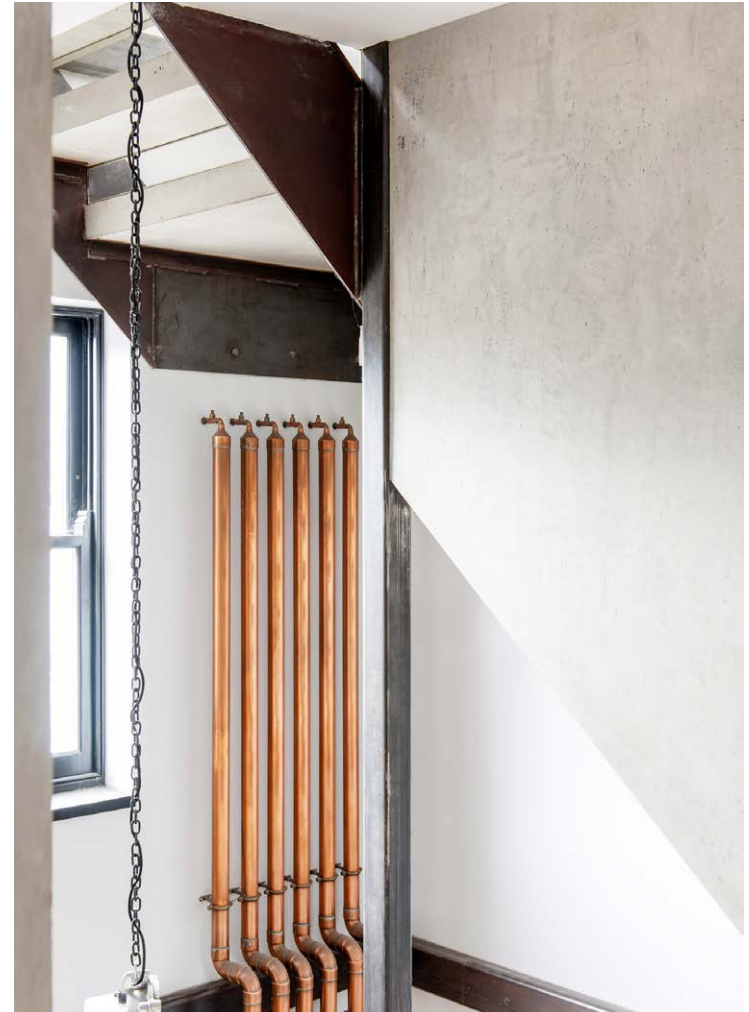












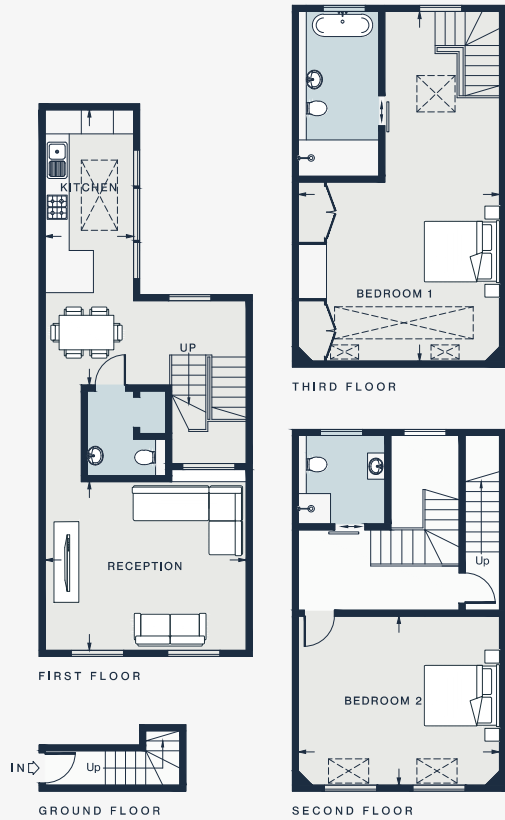












RECEPTION  
16'5 x 13'10 (5.0m x 4.2m)

KITCHEN  
22'6 x 7'3 (6.8m x 2.2m)

BEDROOM 1  
28'8 x 16'3 (8.7m x 4.9m)

BEDROOM 2  
16'8 x 13'10 (5.0m x 4.2m)

Approx. Gross Internal Area = 1,561 sq ft / 145.0 sq m

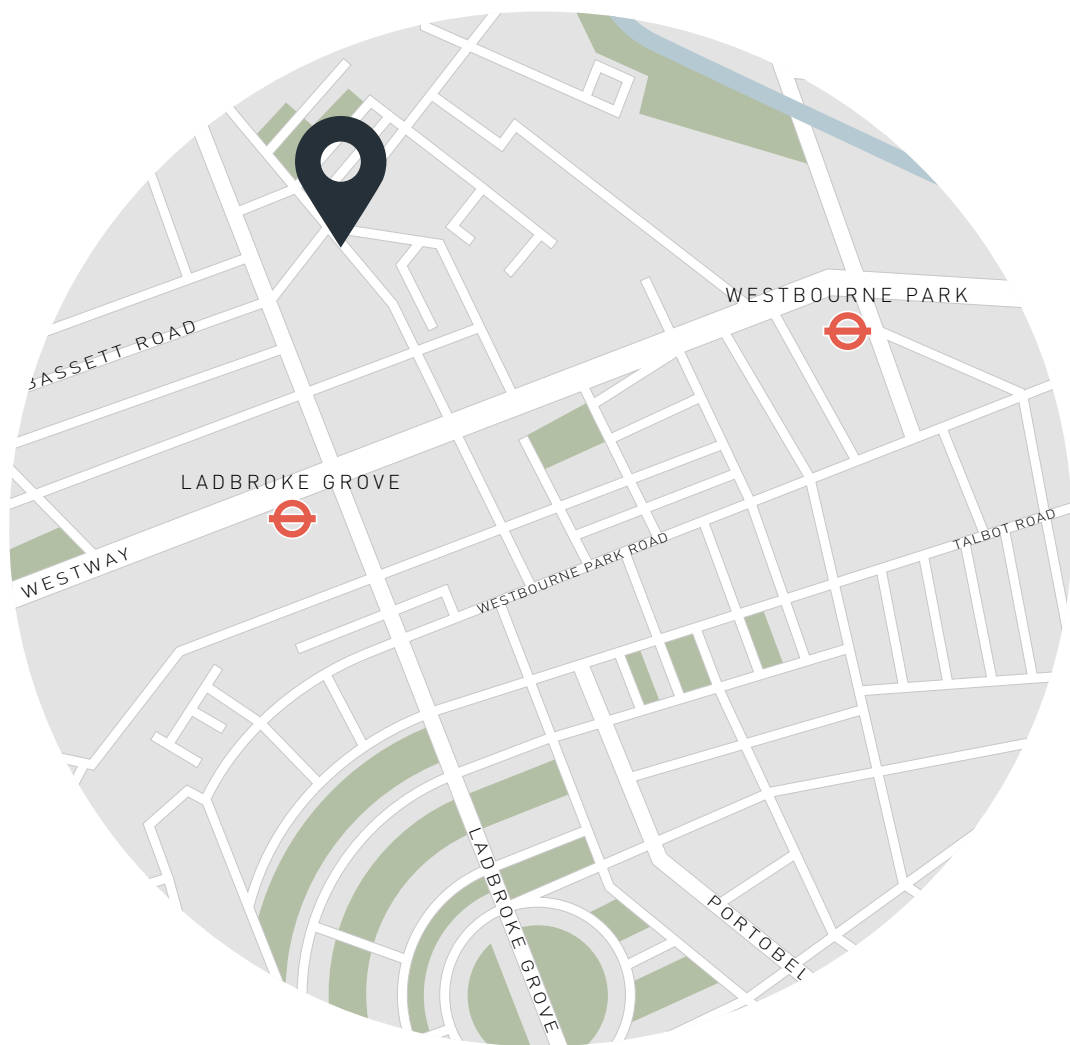
Floor plans are for illustrative purposes only and not to scale. Compliant with RICS code of measuring practice.

## Property Details

Architecture by Cubic Studios  
 Reception room  
 Contemporary kitchen and dining room  
 Principal bedroom suite  
 Guest bedroom  
 Additional shower room  
 Royal Borough of Kensington & Chelsea

Approx. 1,561sq ft/145 sq m  
 EPC - B  
 Leasehold  
 Council tax - E





## Location

At the intersection of Portobello and Golborne Road, this home is in the heart of the vibrant and community-orientated character of its postcode. Start your morning with a pastry from Portuguese favourite Lisboa. For evening ventures, book a dinner at one of Layla's Bakery's supper clubs or head to the Elgin for a drink. Wormwood Scrubs is tailor-made for a weekend strolls, followed by a traditional roast and live music at Laylow. Ladbroke Grove is a stone's throw away for easy access into central London and beyond.

Specialising in London  
and Ibiza's design-led homes

Let's talk  
020 7221 7817  
sales@domusnova.com  
domusnova.com

The particulars above are a guide, not an offer or contract. Descriptions, photographs and plans are not statements or representations of fact. Measurements are approximate and not to scale. Prospective purchasers must verify the accuracy of the information within the particulars. Domus Nova does not give any representations or warranties, nor represent the Seller legally. Domus Nova has no liability, for any costs, losses or expenses incurred by the Seller or a prospective buyer relating to the sales and buying transaction.

Our Sales Disclaimer, trading names and privacy policy on how your data is processed and used is found in full on our website in our [Privacy Statement](#).

© Domus Nova 2023. All rights reserved.