

DOMUS NOVA

Palace Gardens Terrace

North Kensington W10

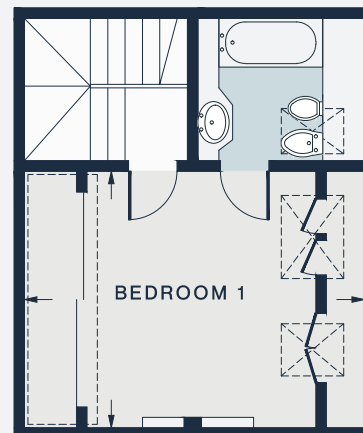
APPROXIMATE GROSS INTERNAL AREA

874 sq ft / 81 sq m


020 7221 7817

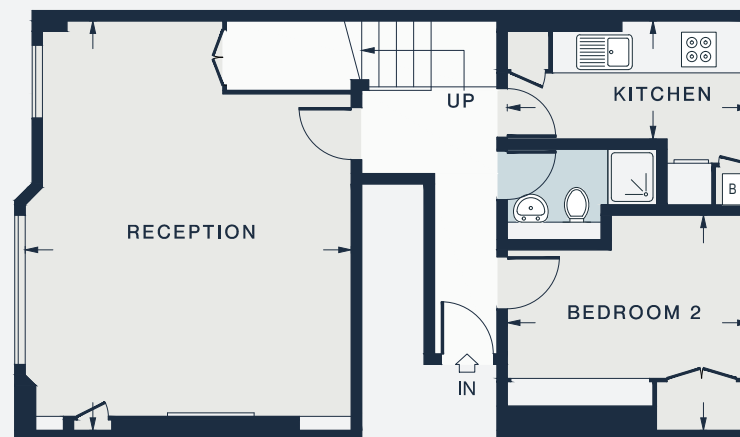
domusnova.com

LONDON | IBIZA



THIRD FLOOR

 = Reduced headroom below 1.5m / 5'0



SECOND FLOOR

RECEPTION
19'6 x 15'6 (5.9m x 4.7m)

KITCHEN
11'5 x 5'8 (3.5m x 1.7m)

BEDROOM 1
16'1 x 12'0 (4.9m x 3.7m)

BEDROOM 2
11'6 x 10'2 (3.5m x 3.1m)

Floor plans are for illustrative purposes only and not to scale. Compliant with RICS code of measuring practice.