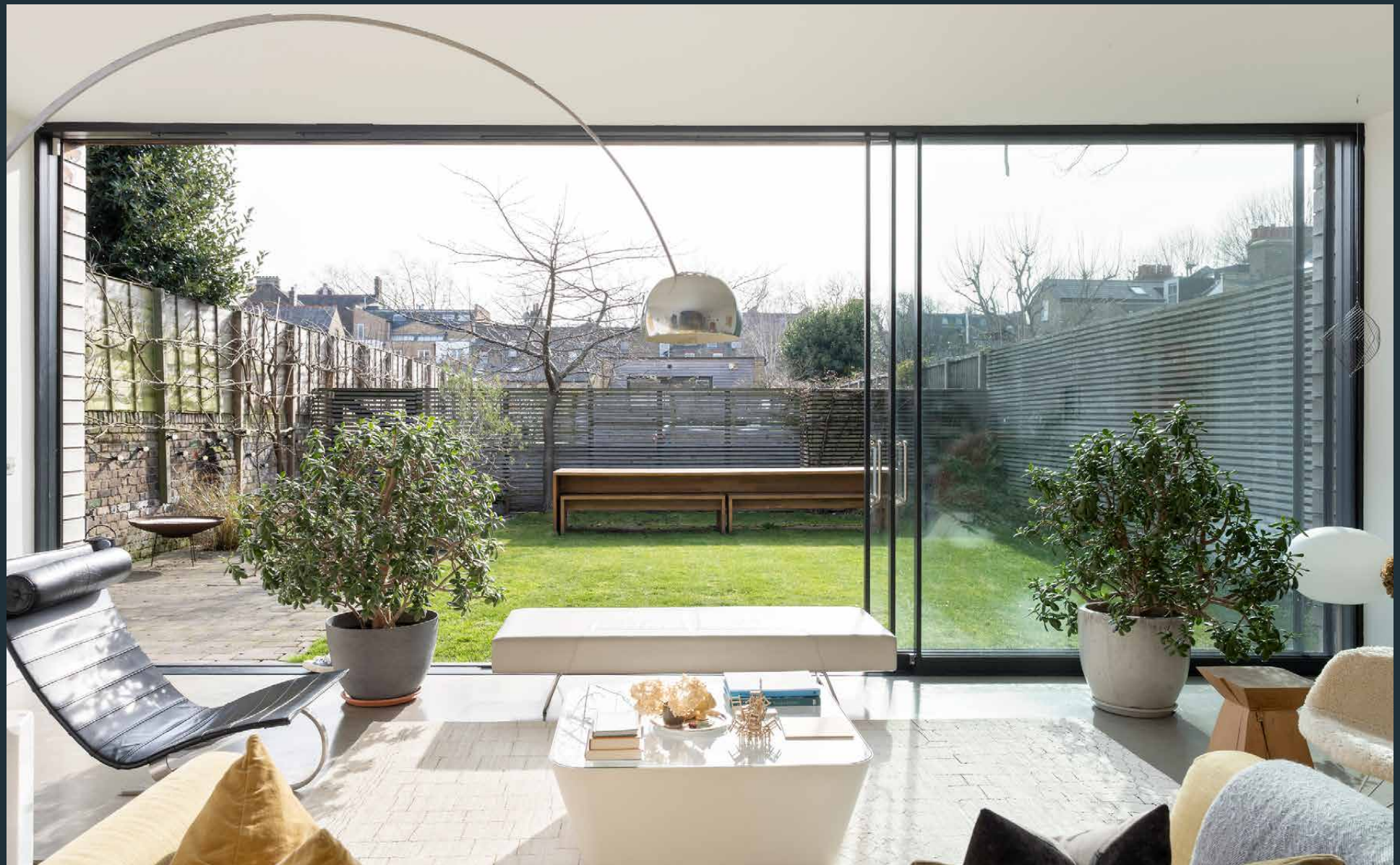


DOMUS NOVA



Orchard Place W4
£3,625,000



Founder of architectural practice NG Architecture, Nick Gowing's knack for creating concise, timeless spaces is encapsulated at his self-designed family home. Built in 2014 on the site of 36 lock-up garages, its low-slung, half-sunken footprint is both a sensitive response to the surroundings and a lesson in simplicity.

As the electric entry gates close behind you, privacy prevails. A cedar clad exterior and green sedum roof lend a camouflaging, unobtrusive effect that continues inside. Nothing shouts here.

Bookended by gardens to the front and back, sliding floor-to-ceiling picture windows ensure an abundant supply of natural light, which adds to the calming, easy-going atmosphere. The curated palette of materials is restrained: iterations of gallery-like white walls, polished concrete floors that are cooling underfoot, and solid oak details are repeated throughout.







With living spaces spread across the ground floor and bedrooms found below, there's a natural sense of flow, too. All doors are full height, meaning one room rolls into the next in linear fashion when open, resulting in an inclusive footprint. To the front of the house, the reception room and kitchen incorporate zones for kicking back, dining and cooking, with no one area dominating.

Purposefully designed to resemble a piece of furniture, the kitchen is particularly understated. An oak worktop with mitred joints feels reassuringly solid and seamlessly tops the custom-made cabinetry by Naked Kitchens. Neff appliances are discreet; the fridge and larder cleverly concealed behind a blackboard wall. A Vola tap is one of the few nods to the space's intended function.



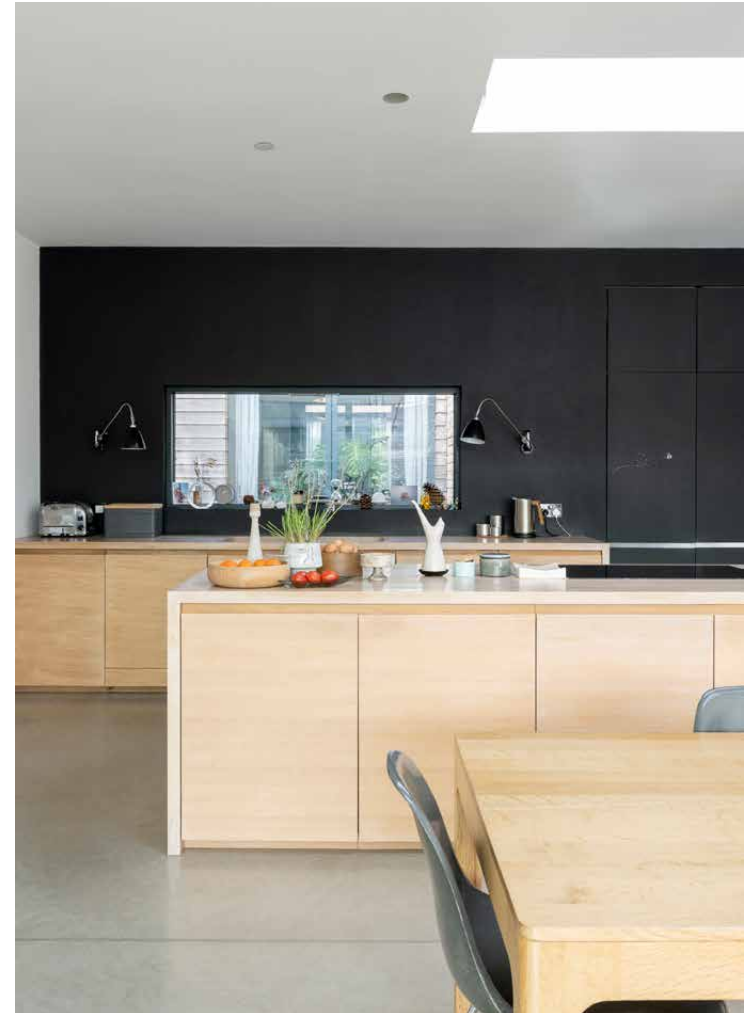






“ Bookended by gardens to the front and back, sliding floor-to-ceiling picture windows ensure an abundant supply of natural light.







Wide corridors ensure connectivity and a sightline through the house. Sitting on a north-south axis, the front garden enjoys a bright outlook, while gentler, softer light illuminates the back garden's counter current pool. This is accessed via a second living space, currently set up as a playroom – note the entire wall of corkboard, perfect for displaying family mementos. Bespoke cabinetry offers convenient storage, while full-height windows dissolve boundaries with the pool area beyond. Set between both living spaces, a purpose-built home office is positioned to be in constant dialogue with the rest of the house. Internal lightwells offer viewpoints in either direction without compromising the room's sense of privacy.



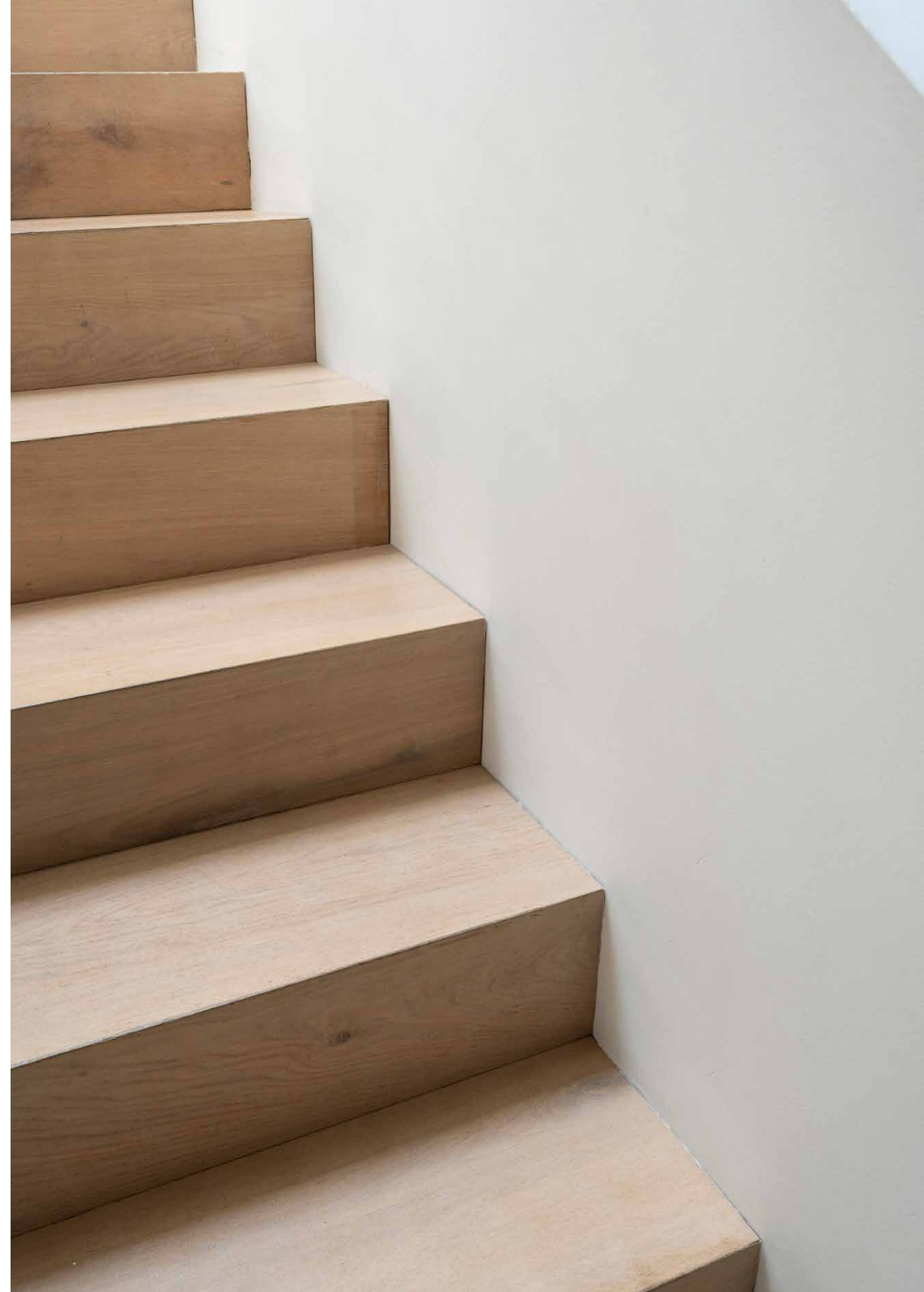


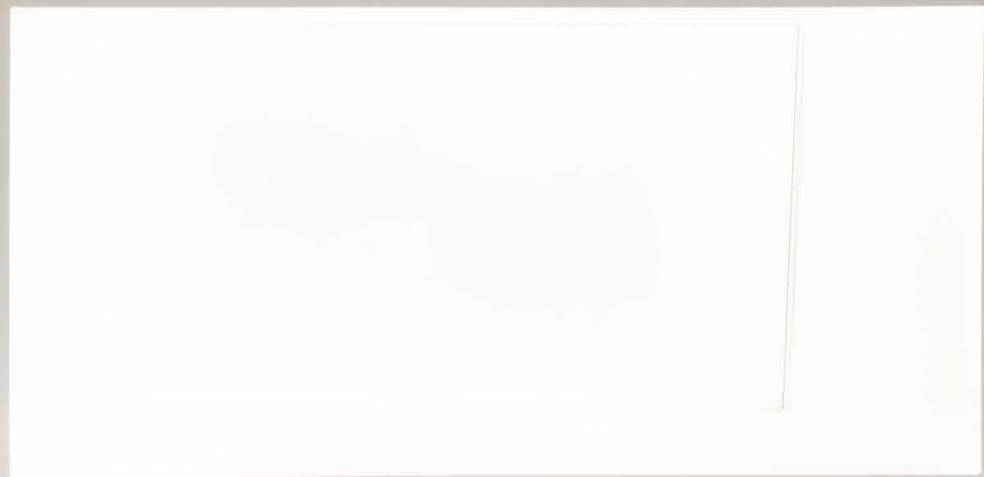
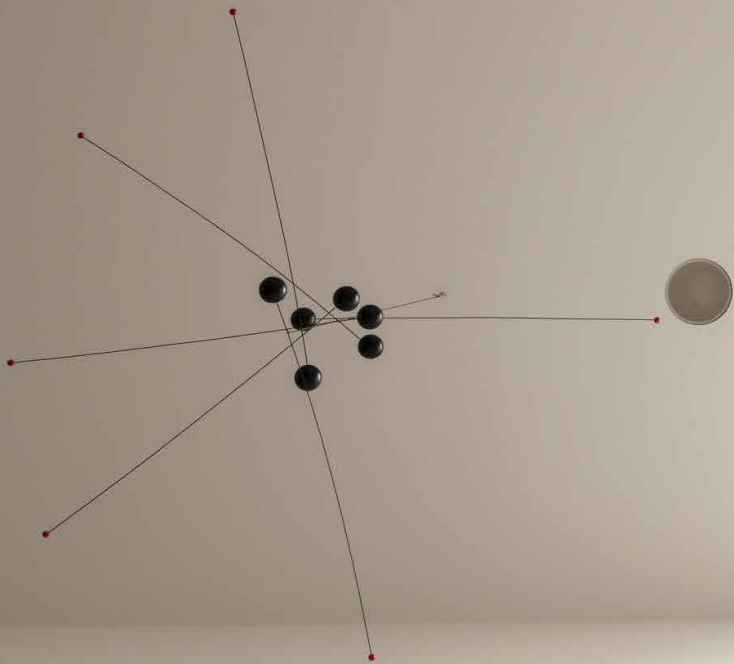


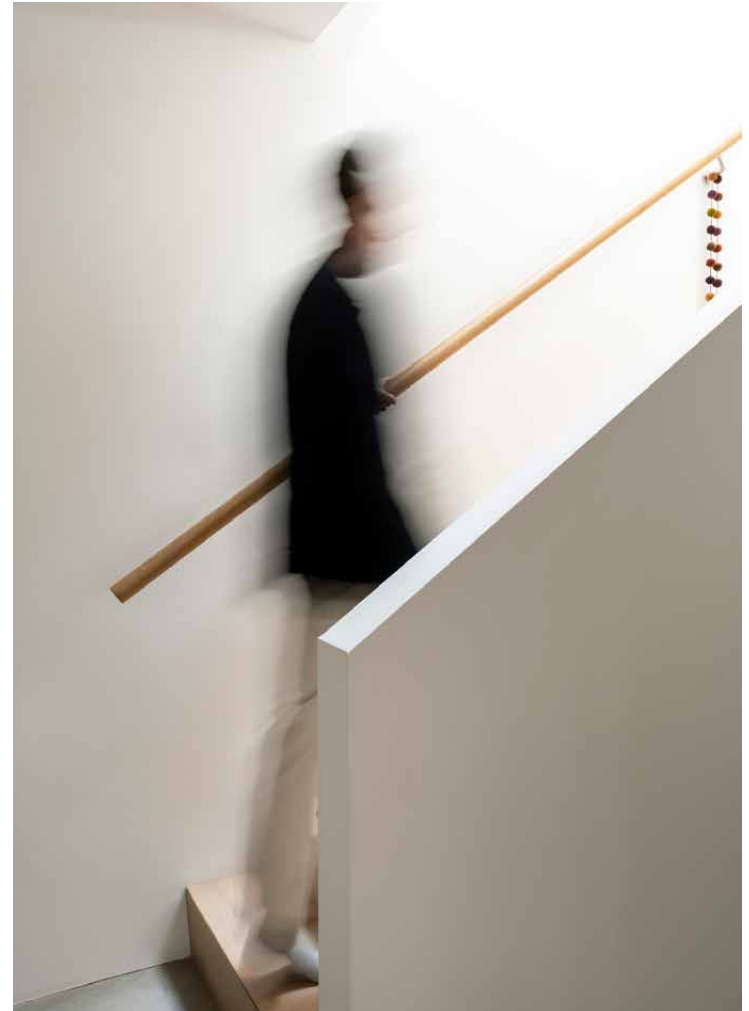
Below, the subterranean bedrooms feel anything but. Large, light-filled spaces that open out onto lightwells and decked courtyards, each comes devoid of distractions. Sheltered and well-insulated, they also maintain a constant, ambient temperature year-round.

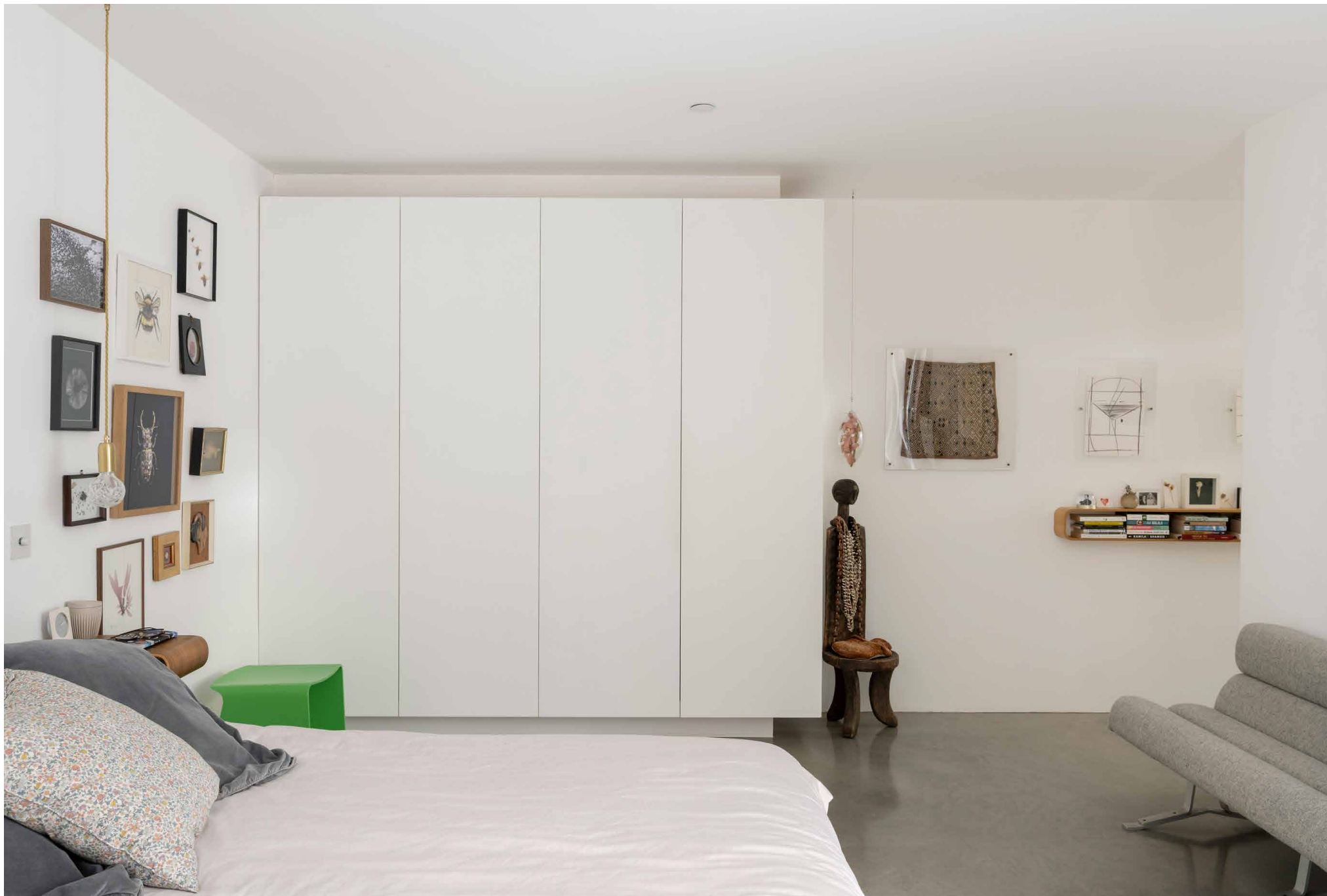
The principal suite is conducive to switching off, completed by a bright bathroom with a walk-in shower. Three further bedrooms are similarly neutral and calming in finish – two of which come with built-in desks. The same blank canvas palette continues into the family bathroom: all matt white tiles that mimic the neutral walls, plus Duravit sanitaryware and a Bette double-ended bath.

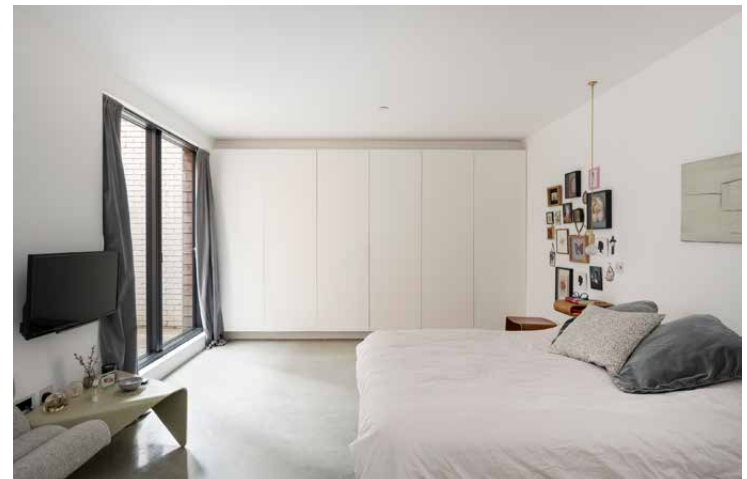
Thoughtfully integrated details further elevate the overall living experience, from the underfloor heating controlled by Heatmiser room thermostats to the 4kW photovoltaic panels. Privacy and security excel too, courtesy of the Hikvision video intercom and Banham alarm.







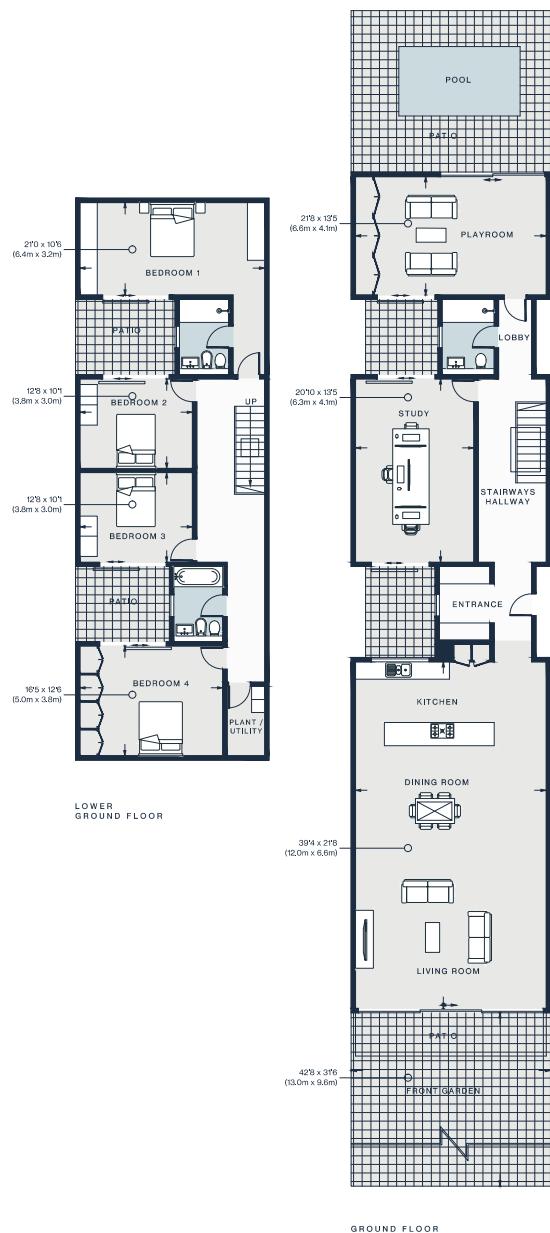










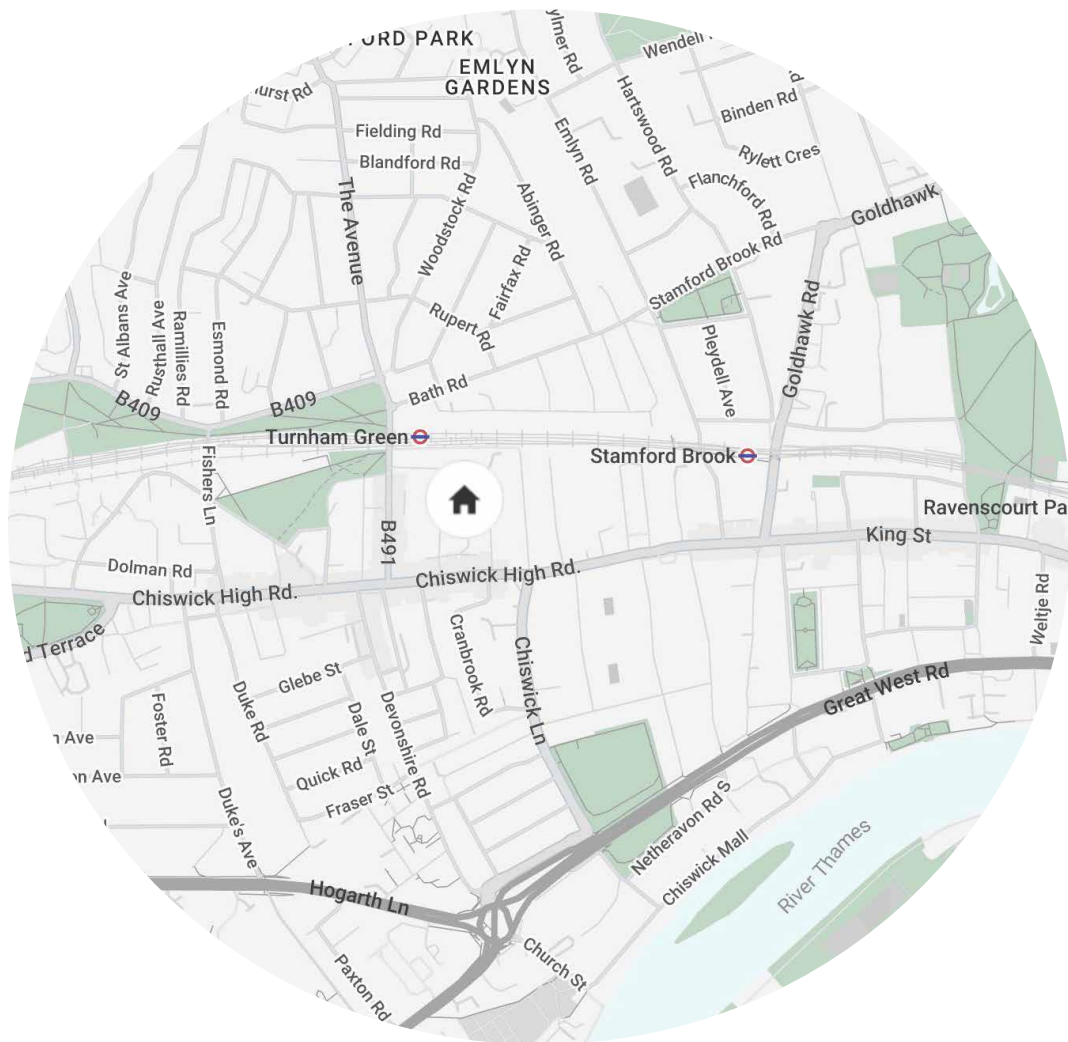


Approx. Gross Internal Area = 2919 sq ft / 271.3 sq m

Property Details

Designed by Nick Gowing of NG Architecture
Open-plan reception room and kitchen
Lightwells and full-height windows throughout
Family room
Purpose-built study
Principal bedroom suite
Three further bedrooms
Family bathroom with double ended bath
Shower room
Private gardens to the front and rear
Decked courtyards
Counter current pool
Underfloor heating
Off street parking for three cars
4kW photovoltaic panels

Approx. 2,919 sq ft / 271.3 sq m



Location

Found in a peaceful suburb with a village-like feel, the leafy expanses of Acton Green Common and Chiswick Common – with its tennis and netball courts – are on the doorstep here, together with an array of independent restaurants and shops. Head to Turnham Green Terrace for Macken Brothers Butchers, Bayley & Sage delicatessen and Natoora greengrocer, while High Road House – the Chiswick outpost of the Soho House members' club – is on nearby Chiswick High Road. Come evening, pull up a stool for sashimi at the popular Sushi Bar Makoto or enjoy fine dining at Villa di Geggiano. The Chiswick Cinema is also in walking distance.

Turnham Green – 5 mins (District, Piccadilly)

Specialising in London
and Ibiza's design-led homes

Let's talk
020 7221 7817
sales@domusnova.com
domusnova.com

The particulars above are a guide, not an offer or contract. Descriptions, photographs and plans are not statements or representations of fact. Measurements are approximate and not to scale. Prospective purchasers must verify the accuracy of the information within the particulars. Domus Nova does not give any representations or warranties; nor represent the Seller legally. Domus Nova has no liability, for any costs, losses or expenses incurred by the Seller or a prospective buyer relating to the sales and buying transaction.

Our Sales Disclaimer, trading names and privacy policy on how your data is processed and used is found in full on our website in our [Privacy Statement](#).

© Domus Nova 2024. All rights reserved.