

DOMUS NOVA



Melrose Gardens W6
£3,500,000

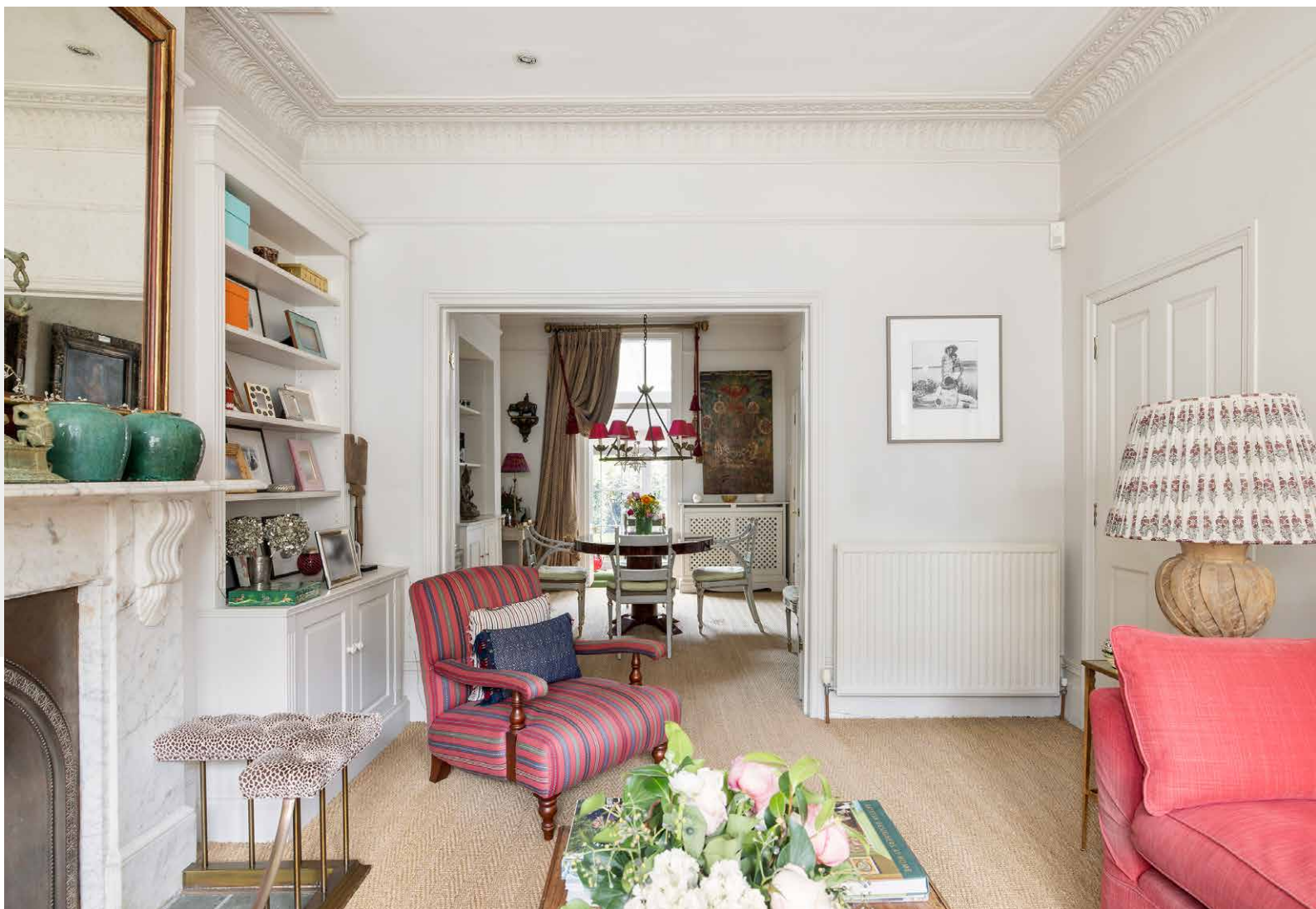


Bold prints and period features bring an uplifting feel to this five-bedroom family home for sale.

Spread over five floors, Melrose Garden's generous proportions are exceeded by its period charm. Teeming with heritage details, from original fireplaces to ornate cornicing, it has a welcoming, lived-in character.

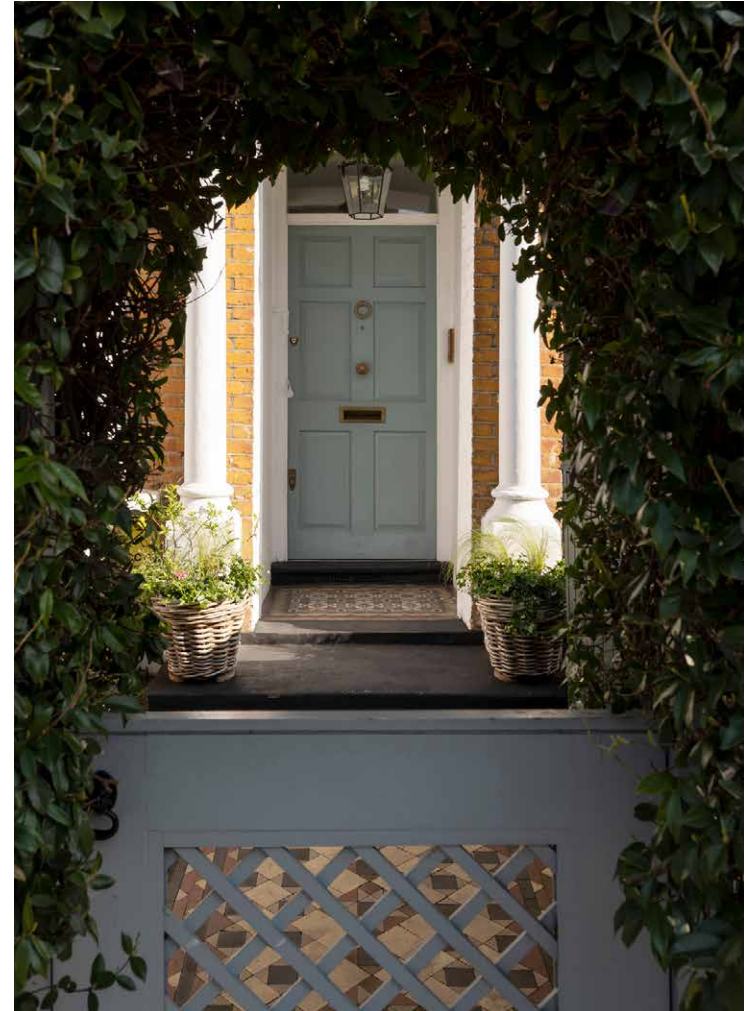
An antidote to white-walled minimalism, the double reception room is inviting and sociable. Natural light filters through the south-facing bay window, warming the tactile sisal carpet underfoot. Sitting either side of the marble fireplace, fitted cabinets maximise the sense of space. Through an opening, a separate dining room awaits; shut the double doors to create a more intimate setting.

Muted tones give way to brighter shades in the skylit kitchen, where duck egg blue units and a floor-to-ceiling dresser bring a farmhouse feel. Featuring a range cooker, oak-topped island and space for a table, there's everything on hand to entertain, both inside and out. An entire wall of glazing offers access to the courtyard-style garden beyond, divided between patio and lawn with mature shrubs and well-established trees. Looking up at the exterior of the house from this angle, you really get a sense of its expansive footprint.

















On the first floor, intricately patterned wallpaper creates an elegant backdrop in what is currently used as a formal sitting room. Note the window seat that makes the most of the elevated vantage point. A guest bedroom with integrated storage and views out to the garden, and a turquoise family bathroom are also found on this level.

Statement floral wallpaper brings a touch of decadence to the principal bedroom, which occupies the entire second floor.

A spacious dressing room, finished in the same colourful motif, leads the way to an atmospheric home office, painted a dusty terracotta.

Each room has its own distinct personality. The third-floor bathroom, for example, has a playful feel, with its candy-striped wallpaper, fabric tassel borders and red roll top bath. Stripes also bring a cosiness to a guest bedroom in the eaves, served by an en suite.

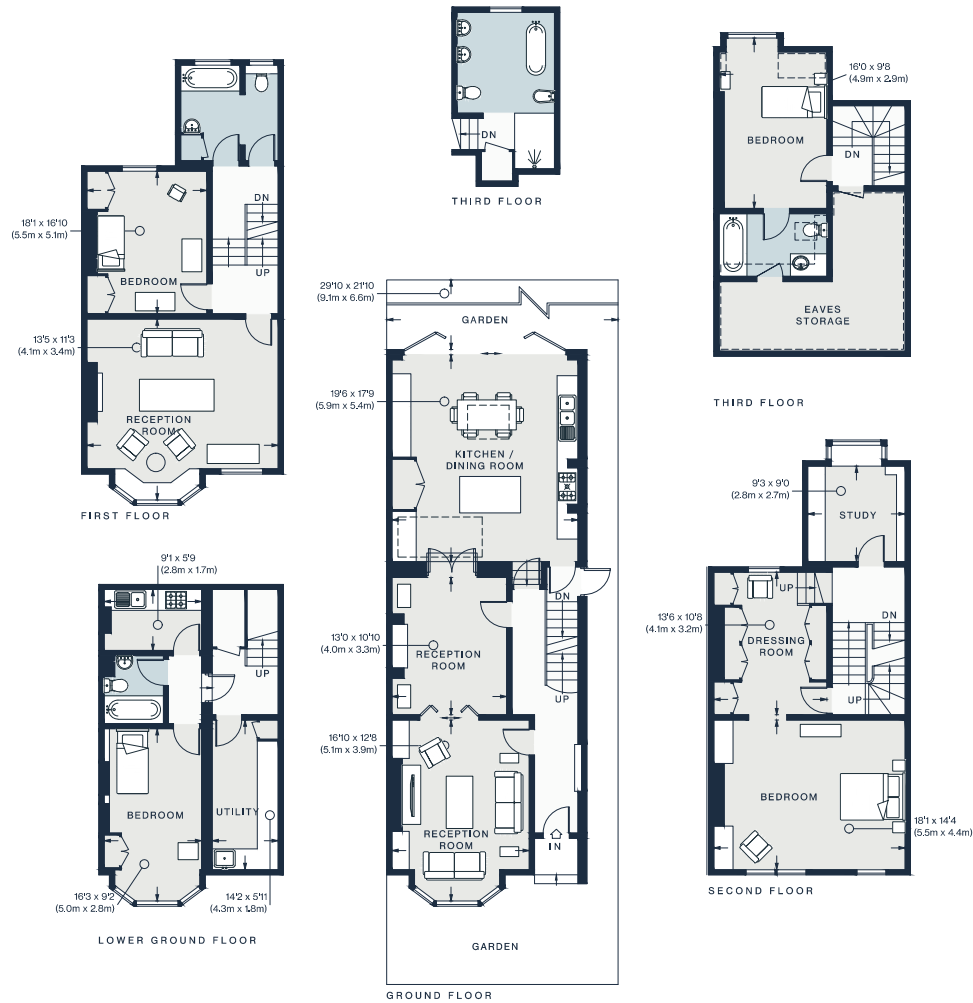
Perfect for teenage children or nannies, the lower ground floor can be configured as a separate annex, complete with bedroom, bathroom and kitchen.









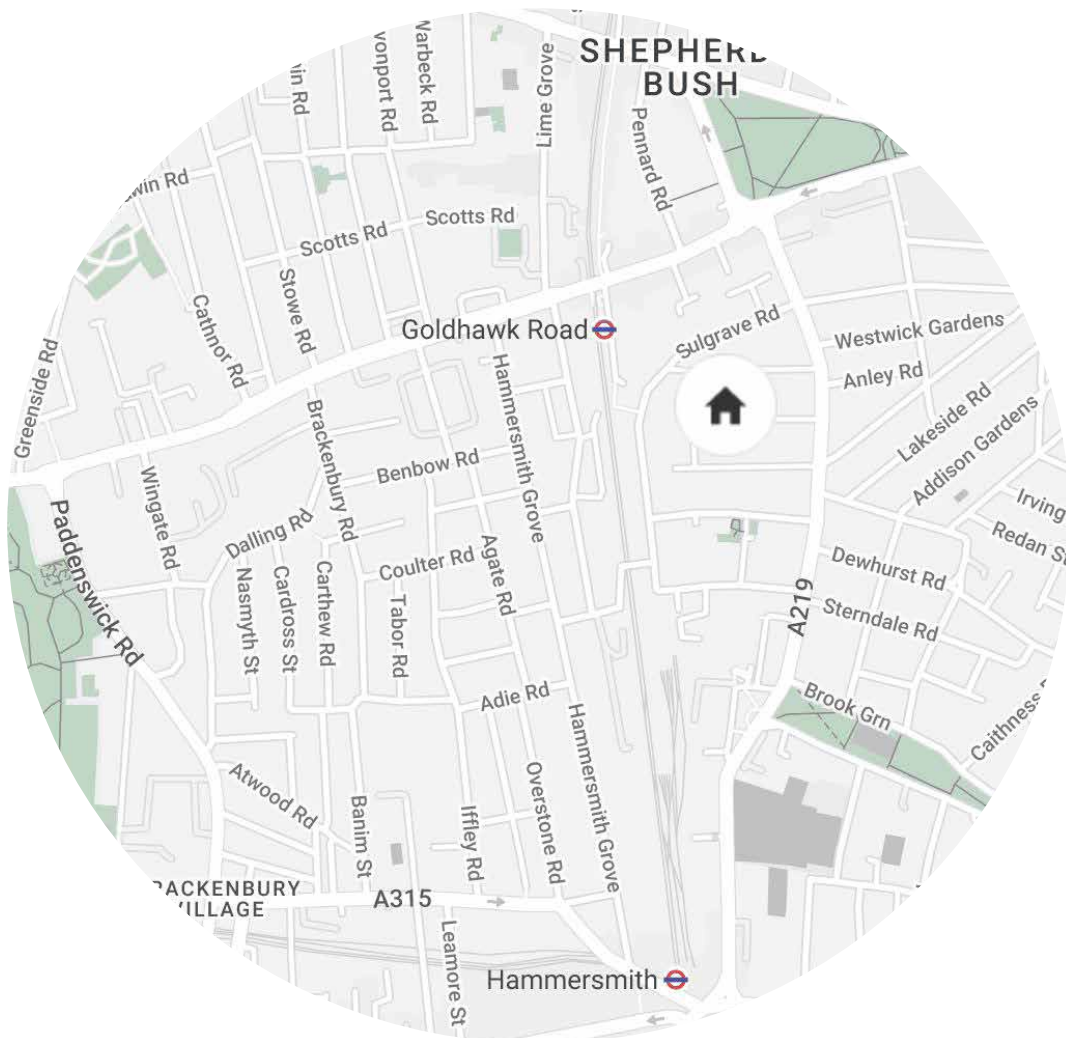


Approx. Gross Internal Area = 3,136 sq ft / 291.4 sq m

Floor plans are for illustrative purposes only and not to scale. Compliant with RICS code of measuring practice.

Property Details

- Double reception room with period features
- Contemporary kitchen
- Principal bedroom with dressing room and private study
- Guest bedroom suite
- Three further bedrooms
- Three further bathrooms
- Self-contained lower-ground floor with bedroom, bathroom and kitchen
- Utility room
- Garden
- London Borough of Hammersmith & Fulham



Location

A neighbourhood of committed localists, Brook Green has an inviting sense of community. Spend the weekends shopping for organic produce at the farmer's market or perfecting your serve at Brook Green Tennis Courts. For a breather, take a stroll along the River Thames. Foodies will appreciate having the likes of The Fishmongers Kitchen and Brackenbury Wine Rooms on the doorstep. For special occasions, The River Café is worth the short cab ride. The capital's top-ranked boys' and girls' secondary schools are also conveniently within walking distance.

Nearest Tube

Goldhawk Road – 7 mins (Circle, Hammersmith & City)

Shepherd's Bush – 10 mins (Central)

Hammersmith – 11 mins (District, Piccadilly)

Specialising in London
and Ibiza's design-led homes

Let's talk
020 7221 7817
sales@domusnova.com
domusnova.com

The particulars above are a guide, not an offer or contract. Descriptions, photographs and plans are not statements or representations of fact. Measurements are approximate and not to scale. Prospective purchasers must verify the accuracy of the information within the particulars. Domus Nova does not give any representations or warranties; nor represent the Seller legally. Domus Nova has no liability, for any costs, losses or expenses incurred by the Seller or a prospective buyer relating to the sales and buying transaction.

Our Sales Disclaimer, trading names and privacy policy on how your data is processed and used is found in full on our website in our [Privacy Statement](#).

© Domus Nova 2023. All rights reserved.