

DOMUS NOVA

Ladbroke Grove

Holland Park W11

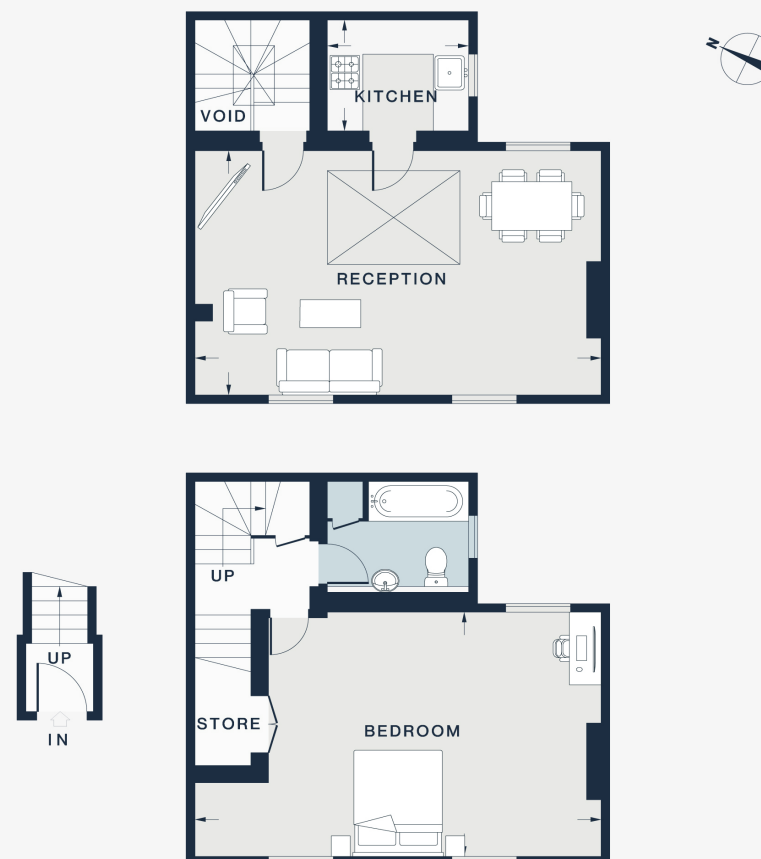
APPROXIMATE GROSS INTERNAL AREA

892 sq ft / 82.9 sq m

020 7727 1717

domusnova.com

LONDON | IBIZA



RECEPTION
22'7 x 14'3 (6.8m x 4.3m)

KITCHEN
7'10 x 6'5 (2.3m x 1.9m)

BEDROOM 1
22'7 x 14'2 (6.8m x 4.3m)

Floor plans are for illustrative purposes only and not to scale. Compliant with RICS code of measuring practice. Furniture layouts are indicative only. This property may be furnished, part-furnished or unfurnished. Please refer to your agent for details.