

DOMUS NOVA

Kensington Park Mews

Notting Hill W11

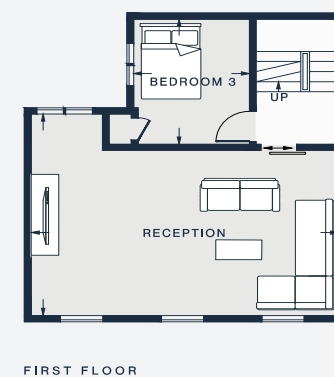
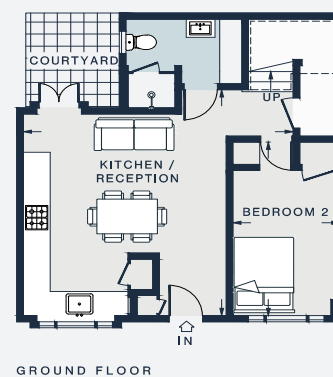
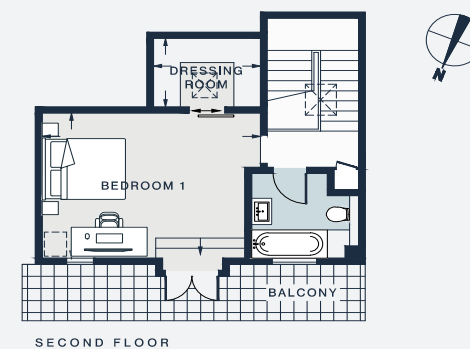
APPROXIMATE GROSS INTERNAL AREA

1364 sq ft / 126.8 sq m

020 7727 1717

domusnova.com

LONDON | IBIZA



KITCHEN / RECEPTION
19'8 x 18'4 (6.0m x 5.6m)

RECEPTION
22'4 x 16'1 (6.8m x 4.9m)

BEDROOM 1
15'9 x 11'6 (4.8m x 3.5m)

BEDROOM 2
14'1 x 7'10 (4.3m x 2.4m)

BEDROOM 3
10'2 x 8'8 (3.1m x 2.6m)

DRESSING ROOM
7'10 x 5'7 (2.4m x 1.7m)

Floor plans are for illustrative purposes only and not to scale. Compliant with RICS code of measuring practice. Furniture layouts are indicative only. This property may be furnished, part-furnished or unfurnished. Please refer to your agent for details.