

DOMUS NOVA

Harvist Road

Queens Park NW10

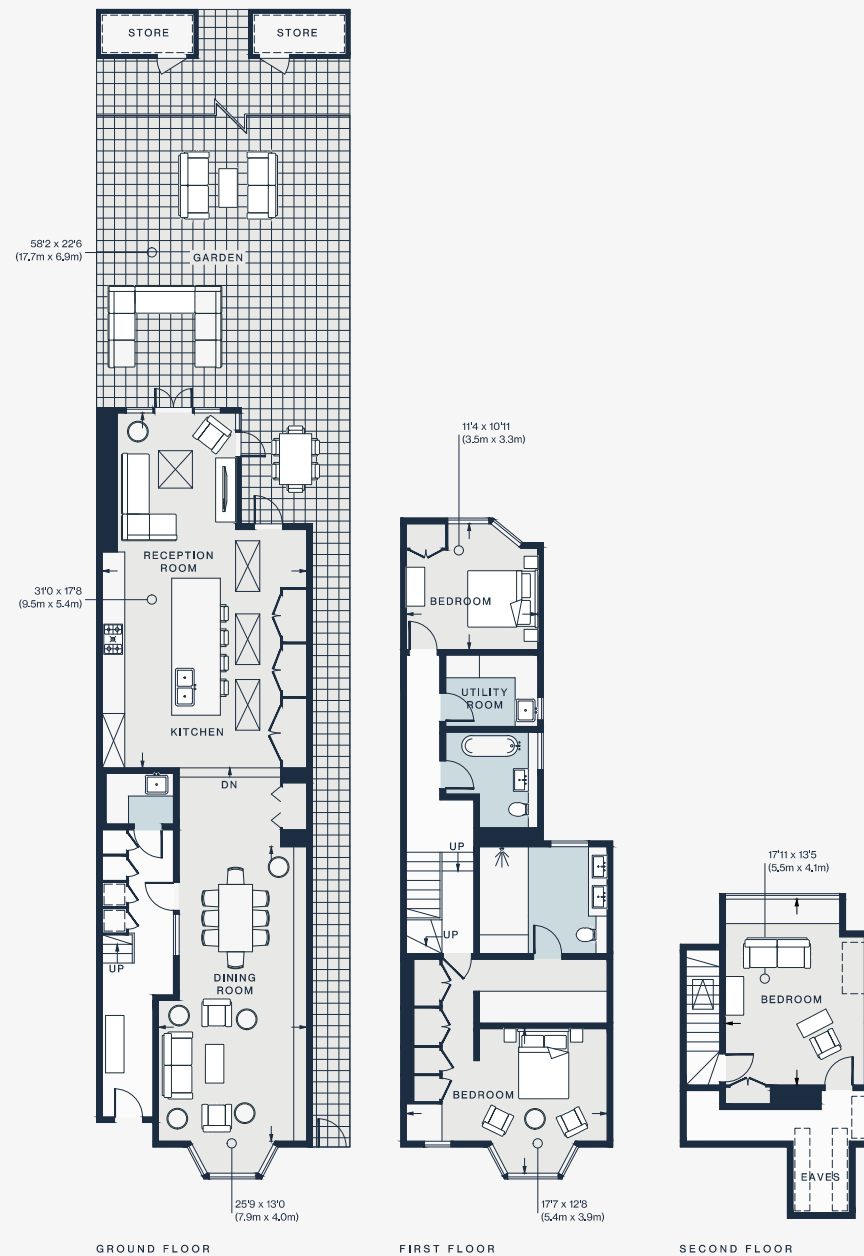
APPROXIMATE GROSS INTERNAL AREA

2,214 sq ft / 205.6 sq m

020 7221 7817

domusnova.com

LONDON | IBIZA



Approx. Gross Internal Area = 2,214 sq ft / 205.6 sq m
(Including Eaves / Excluding Stores)

Floor plans are for illustrative purposes only and not to scale. Compliant with RICS code of measuring practice.