

DOMUS NOVA

Elsham Road

Holland Park W11

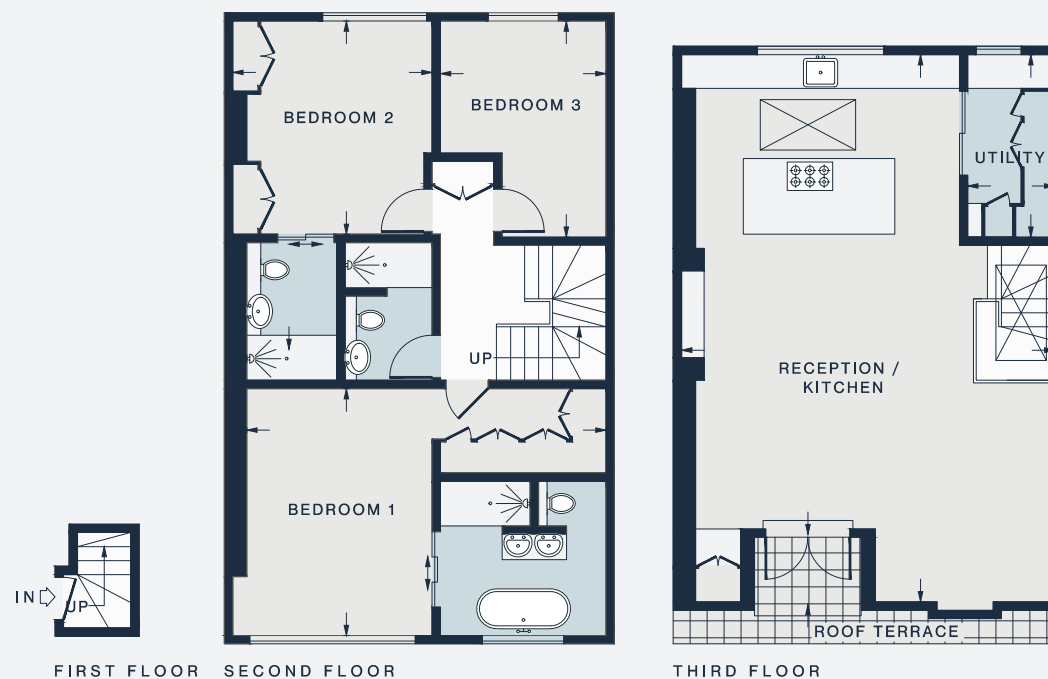
APPROXIMATE GROSS INTERNAL AREA

1,469 sq ft / 136.5 sq m

020 7221 7817

domusnova.com

LONDON | IBIZA



RECEPTION / KITCHEN

31'10 x 21'9 (9.7m x 6.6m)

UTILITY

10'7 x 5'3 (3.2m x 1.6m)

BEDROOM 1

20'11 x 14'4 (6.3m x 4.3m)

BEDROOM 2

12'6 x 11'5 (3.8m x 3.5m)

BEDROOM 3

12'6 x 9'5 (3.8m x 2.8m)

Floor plans are for illustrative purposes only and not to scale. Compliant with RICS code of measuring practice.