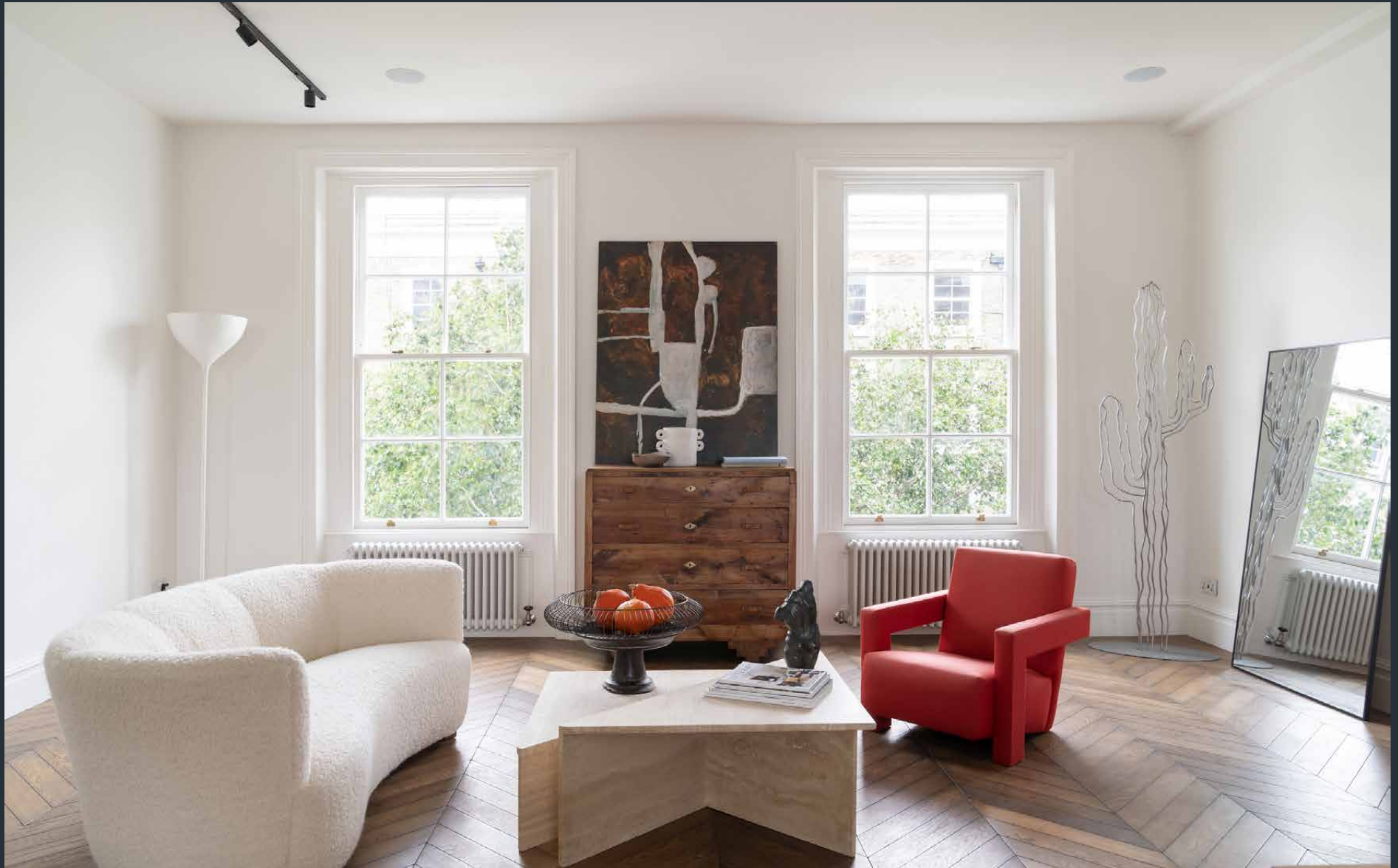


DOMUS NOVA



Durham Terrace W2
£2,950,000

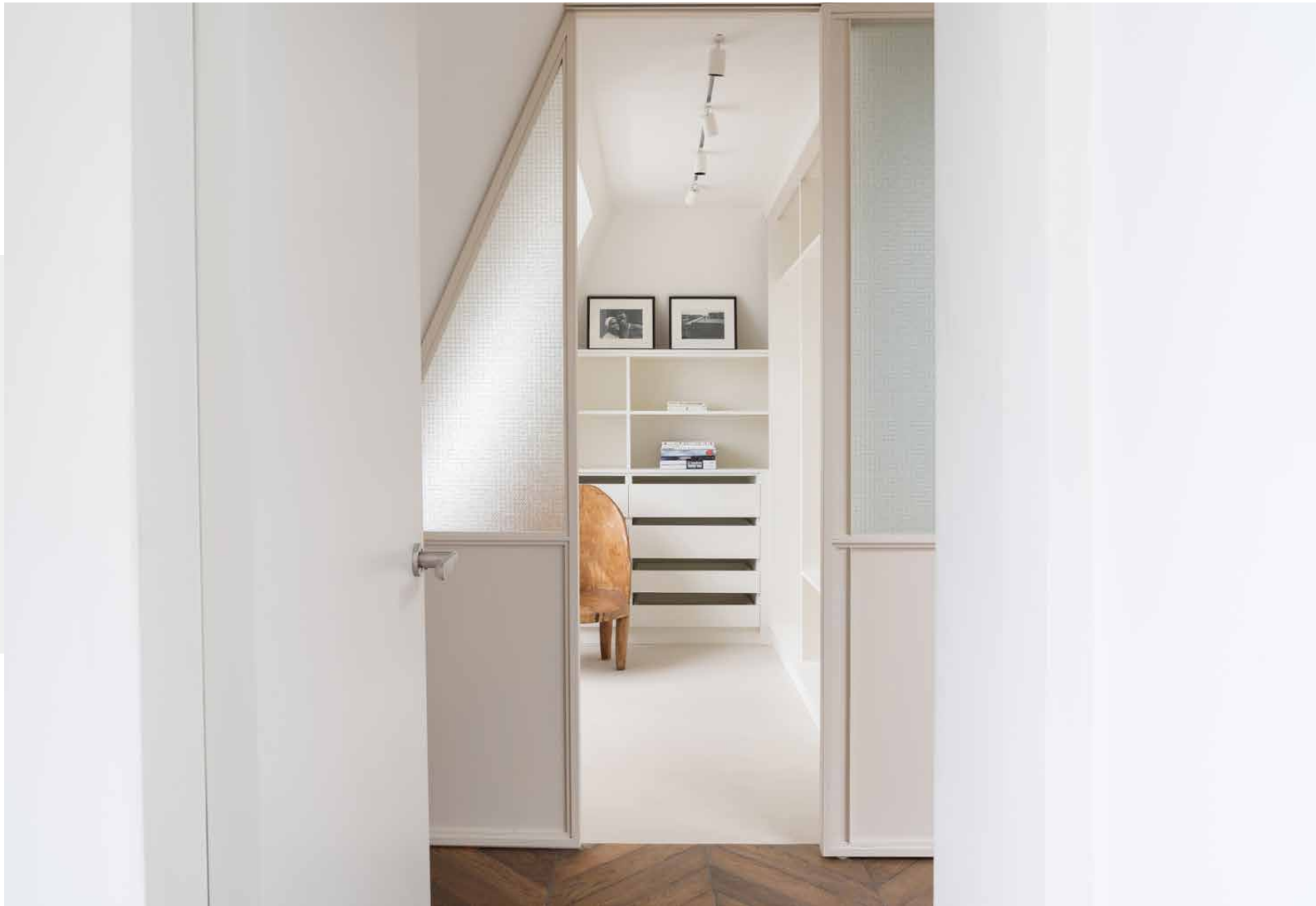


Set across the upper floors of a quintessential Notting Hill townhouse, this minimalist four-bedroom apartment is elevated by a welcoming atmosphere.

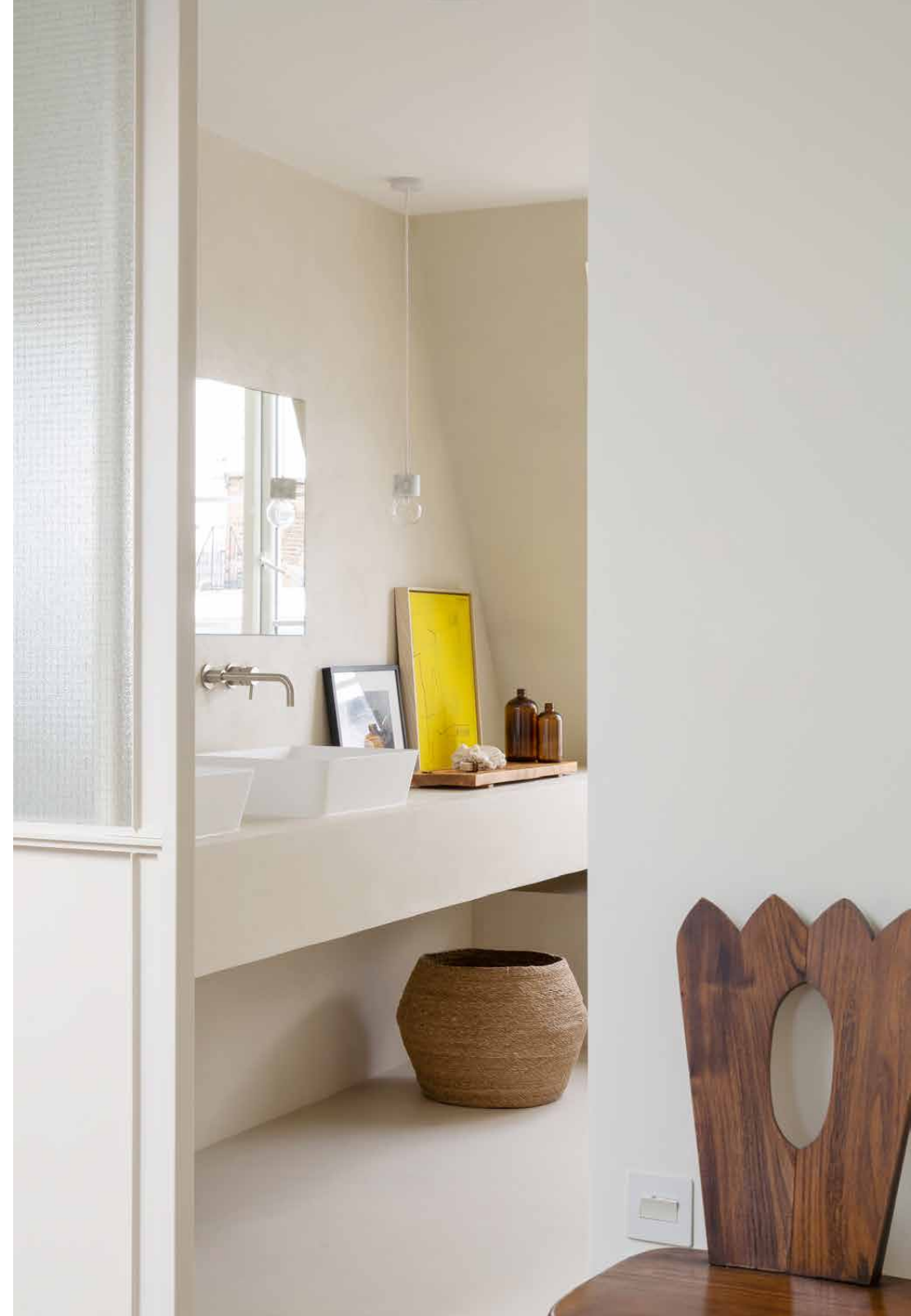
There's an uplifting, voluminous feel to the open-plan kitchen and reception room. Entering on the second floor, the space is filled with light through dual-aspect sash windows. Immaculate parquet floors and whitewashed walls set a sophisticated tone for eclectic furnishings, illuminated by jet-black track lighting. The eye is drawn to a feature fireplace, where exposed brick affords a compelling textural edge. Smooth surfaces are married with high-tech appliances in the kitchen, positioned next to an inviting dining area. A Sonos sound system is subtly integrated into the ceiling; an auditory backdrop for evenings of entertainment.







Cast-iron balusters lead upstairs to the fourth-floor principle bedroom. Skylit, soothing and serene, it enjoys direct access to a south-west facing balcony. Inside, frosted glass sliding doors reveal an ensuite and study space respectively. A showpiece of bathroom design, it's a polished space with exceptional finishes ranging from the bespoke Harvey George dual vanity to an oversized walk-in shower. Sitting parallel, there's a calming quietude to the home office, complete with integrated shelving and a large sash window. Three guest bedrooms – one with an ensuite shower room – echo the tranquil feel of the master, with pared-back palettes and reams of light. From this floor, head out to a second balcony – a quiet, alfresco suntrap. With a character that revives as it soothes, this home is envisaged for stylish family living in the beating heart of west London.

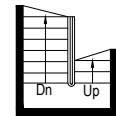




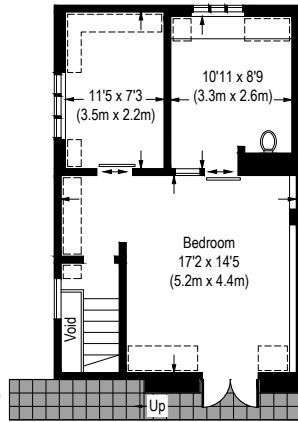






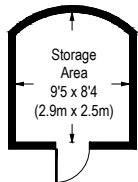


Third Floor (Half Landing)

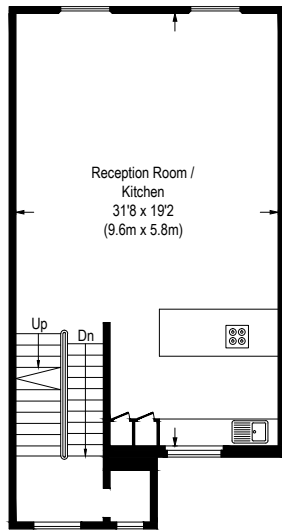


Fourth Floor

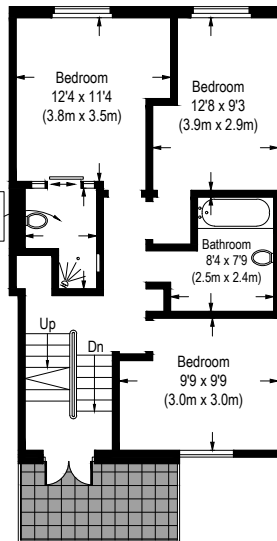
= Reduced headroom below 1.5m / 5'0"



Lower Ground Floor



Second Floor



Third Floor

First Floor

Approximate Gross Internal Area (Excluding Reduced Headroom / Void)

1781 Sq.Ft. / 165.5 Sq.M.

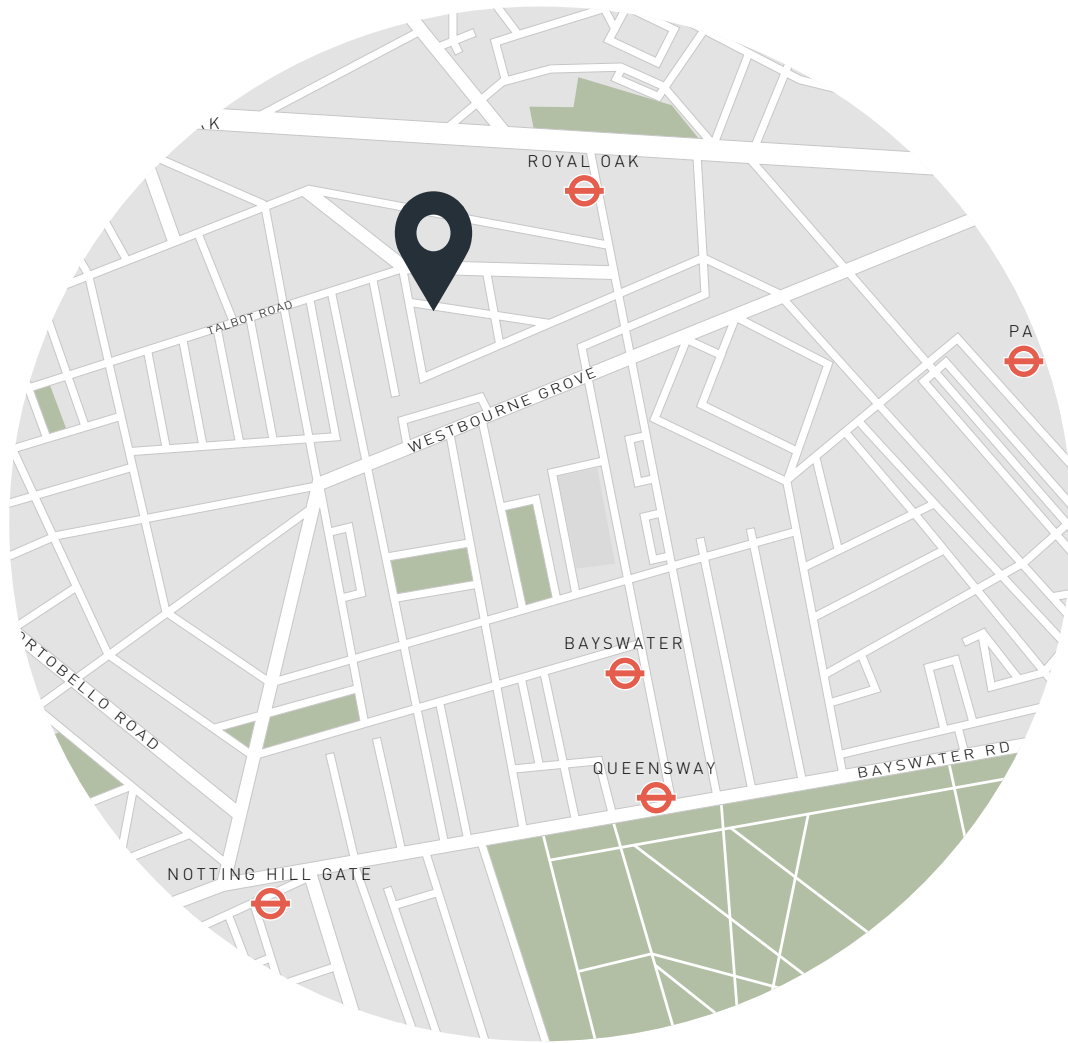
Approximate Gross Internal Area (Including Reduced Headroom / Excluding Void)

1831 Sq.Ft. / 170.2 Sq.M.

Floor Plans are for illustrative purposes only and not to scale.
Compliant with RICS code of measuring practice.

Property Details

- Open-plan kitchen and reception room
- Master bedroom with ensuite bathroom and study
- Guest bedroom with ensuite bathroom
- Two further guest bedrooms
- Family bathroom
- Two balconies
- Approx. 1781 sq ft / 165.5 sq m EPC=D



Location

Set on a peaceful, tree-lined street, Durham Terrace is just minutes' away from Portobello Road's global eateries and vintage stalls, and Westbourne Grove's coveted boutiques and invigorating workout spaces. Brunch at coveted local spots Beam, Granger & Co. or Farmacy, followed by a trip to Hyde Park. Try a class at Bodysim, Pscyle or 1Rebel. Dinner at Caractere, followed by a drink at The Cow – one of west London's most legendary pubs. Home in three.

DOMUS NOVA

Specialising in London
and Ibiza's design-led homes.

Let's talk
020 7221 7817
sales@domusnova.com
domusnova.com