

DOMUS NOVA



Dunworth Mews W11

£2,950 p/w - Short Let

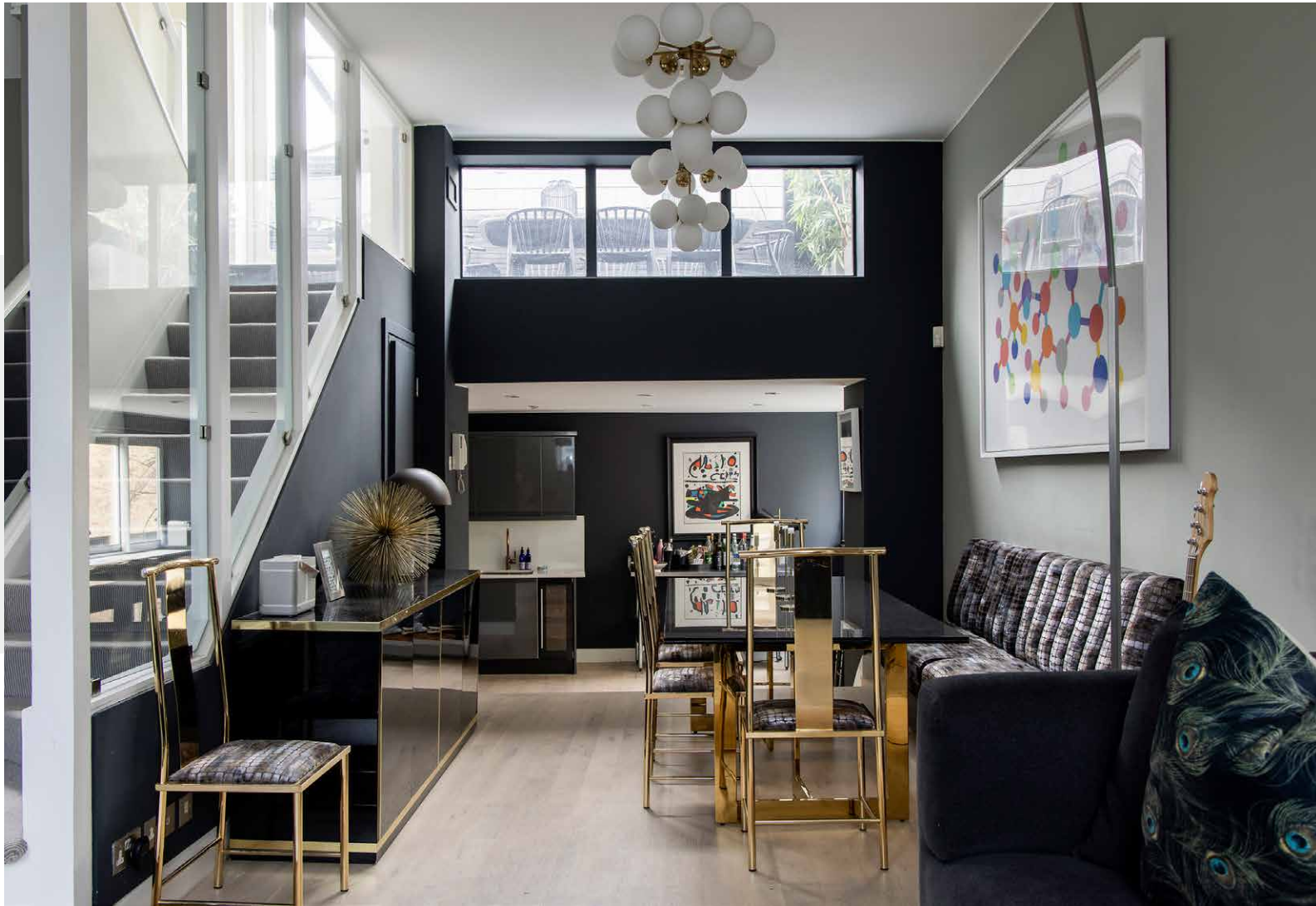


A masterpiece in monochrome. This two-bedroom mews home off Portobello Road features distinctive interiors and extensive outside space.

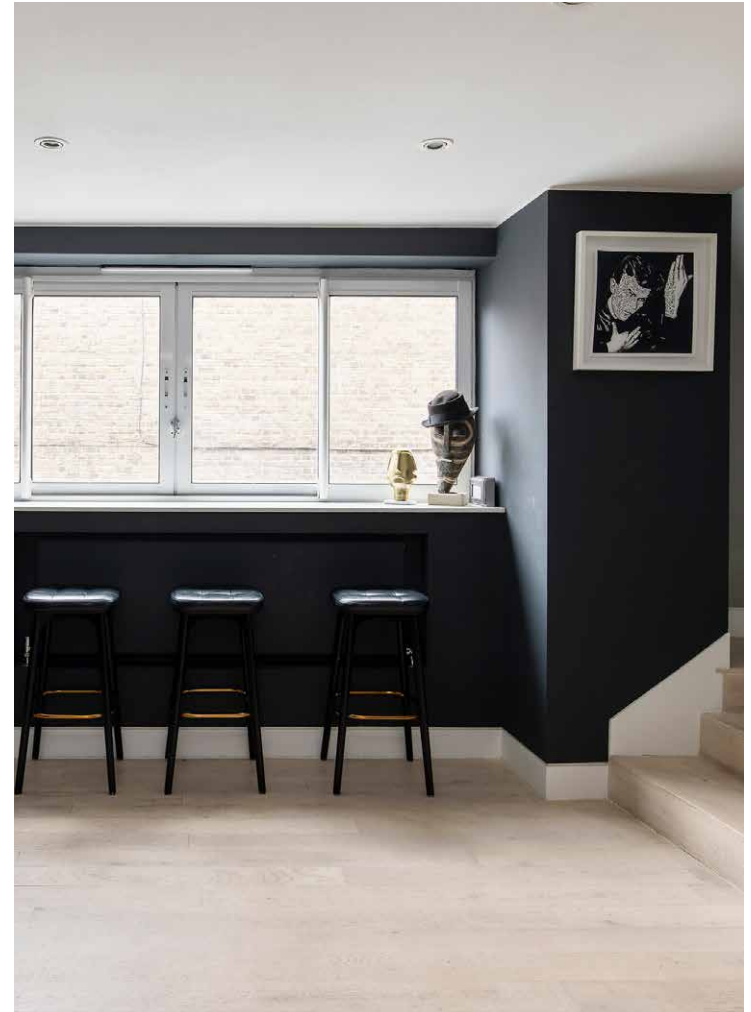
Set within a cobbled cul-de-sac, a period framework has been updated with contemporary character. This distinguished home is moments from bustling Portobello Road but enjoys the quietude of its mews location.

The first-floor entrance flows into an open-plan kitchen and living area. The space features indulgent furnishings and statement lighting throughout. White and gold accents provide contrast against teal tones. Set into a matte black feature wall, a fireplace creates symmetry with the TV above. Integrated appliances and marble worktops create a sophisticated feel to the kitchen. Concealed lighting softly illuminates wooden floors and glossy, minimalistic cabinetry.

The second floor plays host to the principal bedroom suite – a calming retreat with integrated storage and two large sash windows. A considered en suite bathroom features a floating basin and frameless walk-in rainfall shower. The guest bedroom incorporates a neutral palette, built-in storage and a modern en suite. This space looks over the shaded dining terrace to the rear. Upstairs, a stylish decked roof terrace encompasses an outdoor living area, mosaic tiles and views over the Notting Hill skyline.



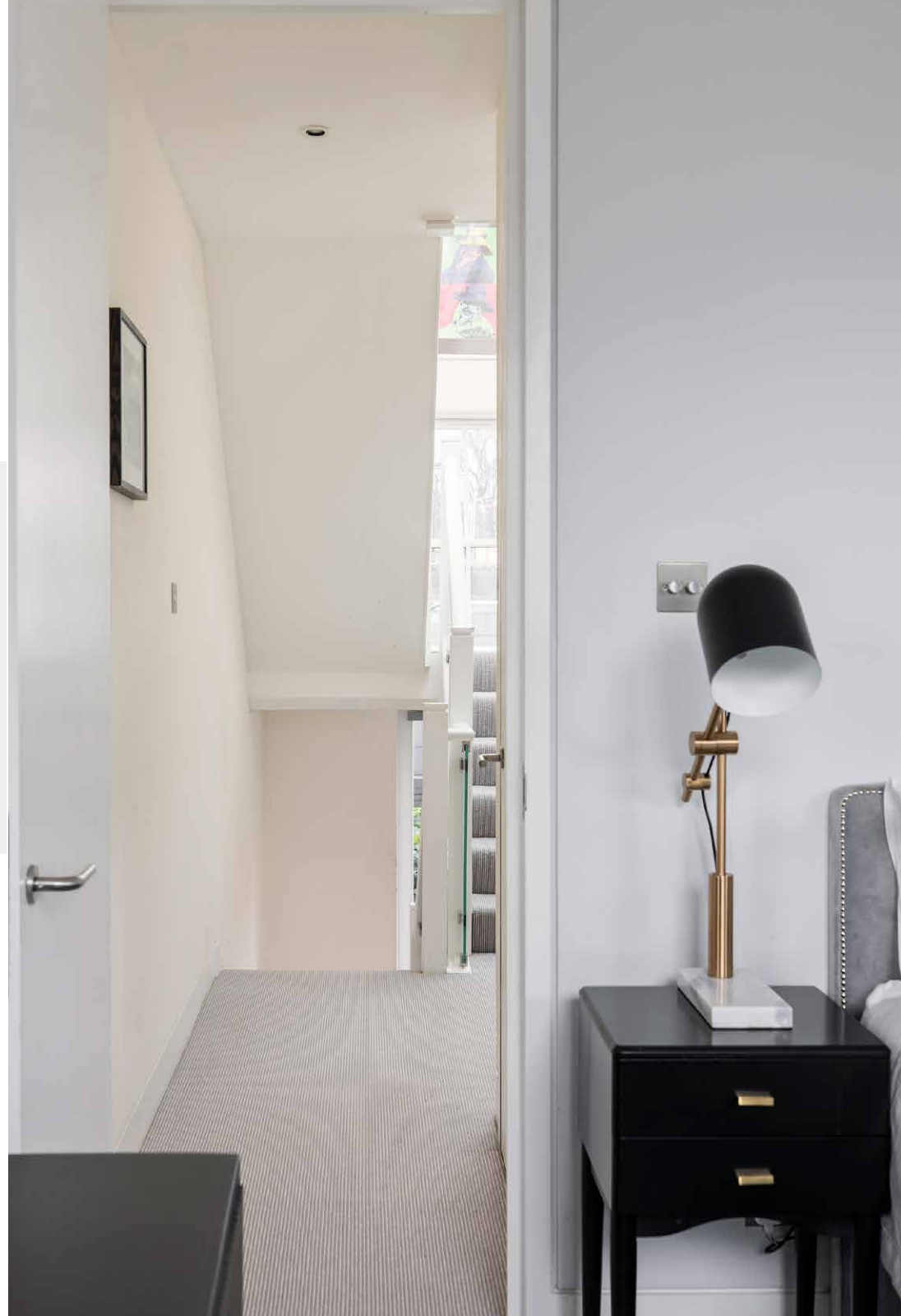


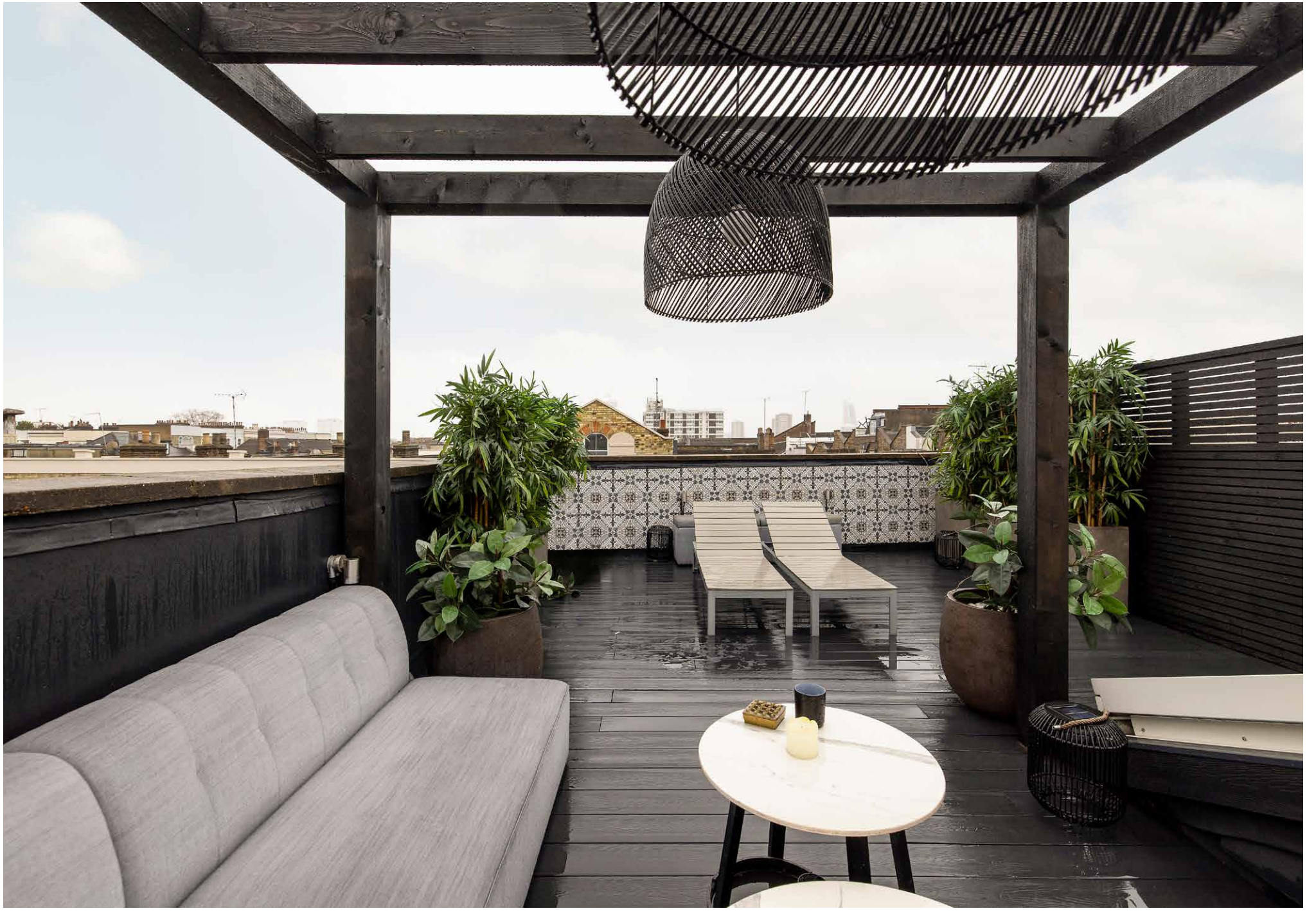




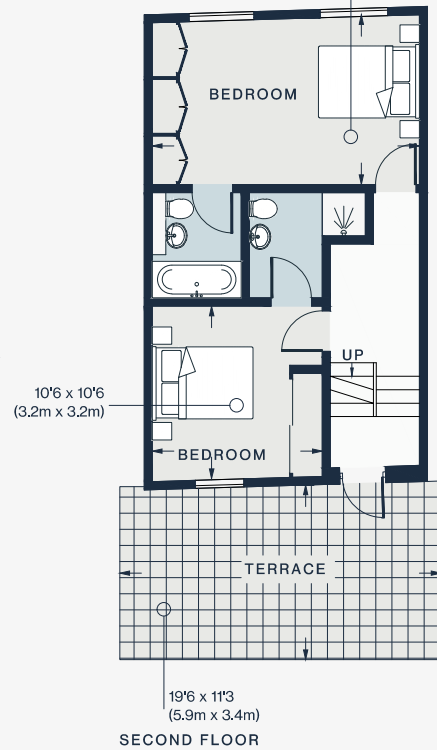
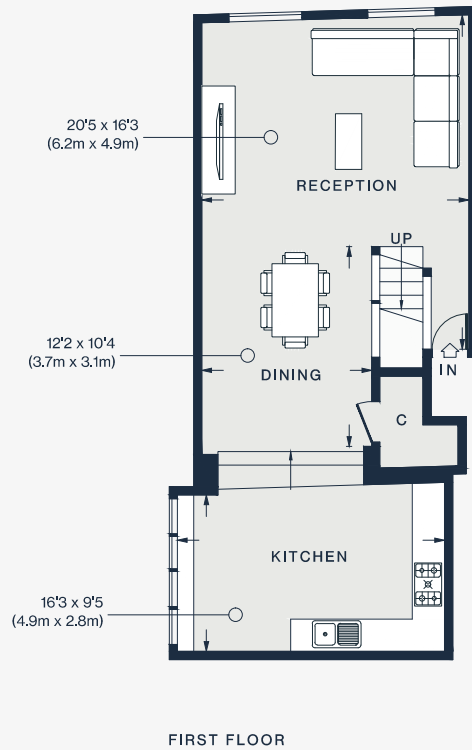
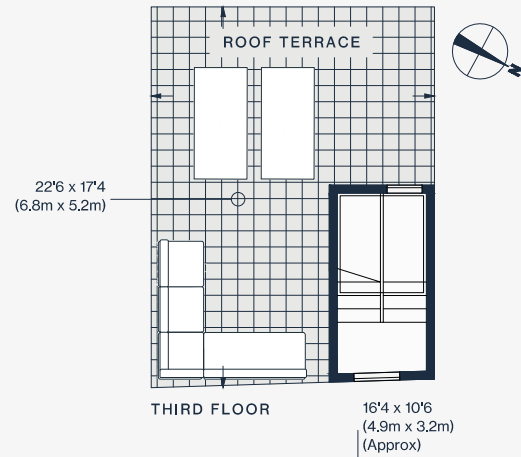












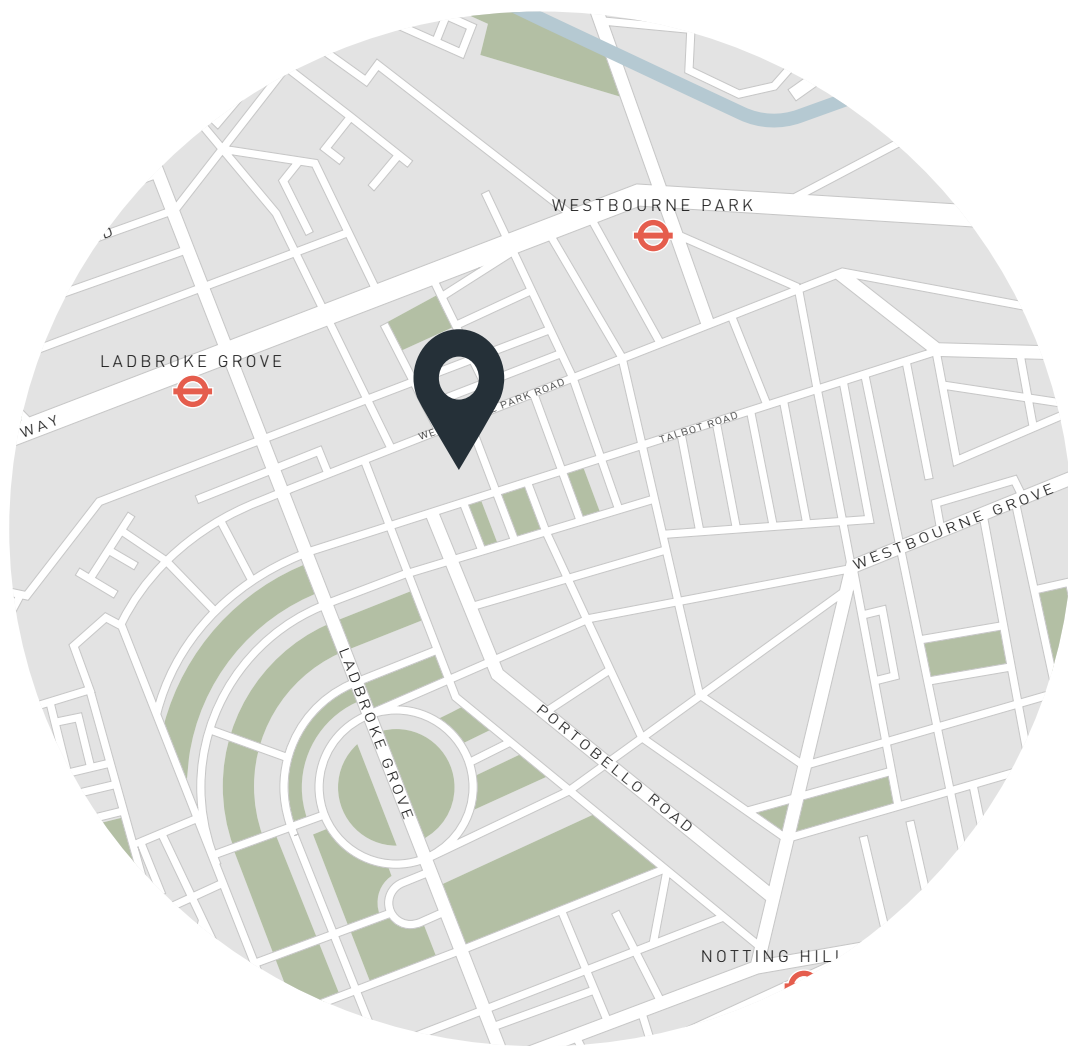
Approx. Gross Internal Area = 1127 sq ft / 104.7 sq m

Floor plans are for illustrative purposes only and not to scale. Compliant with RICS code of measuring practice. Furniture layouts are indicative only. This property may be furnished, part-furnished or unfurnished. Please refer to your agent for details.

Property Details

- Open-plan kitchen and living area
- Principal bedroom suite
- Guest bedroom suite
- Rear dining terrace
- Large private roof terrace
- Royal Borough of Kensington & Chelsea

- EPC=E
- Price per month - £15,167
- Council tax band - F
- Deposit Payable - £11,800



Location

Buzzy and bohemian, Portobello Road is moments from this period mews. Local favourite boutiques House of Retro and Sub Couture are on your doorstep. Browse the antiques and oddities of Portobello Market or walk to the Grand Union Canal within 10 minutes. Of the many local restaurants, foodie favourites include Gail's Bakery, Ottolenghi and e&o Pan Asian Restaurant. Or head to gastronomic institution The Ledbury. Be home in five.

Ladbroke Grove (5 mins)
Notting Hill Gate (12 mins)

Specialising in London
and Ibiza's design-led homes

Let's talk
020 7727 1717
lettings@domusnova.com
domusnova.com

The property particulars are a guide not statements. Descriptions, photographs, and plans are for guidance and should be checked by the prospective tenant. The Property is offered "subject to contract and references". No warranties, representations, or Tenancy is given by Domus Nova. Expenses incurred by a prospective tenant will not be reimbursed if the Landlord withdraws prior to the Tenancy Agreement being signed, dated and exchanged and cleared funds received. Furniture and other items shown in a property at viewing may belong to a current tenant. The prospective tenant should verify in writing which fixtures and fittings forms part of the Tenancy. Our full lettings disclaimer together with trading names and our [Privacy Policy](#) is shown on our website