

DOMUS NOVA

Dundonald Road

Queen's Park NW10

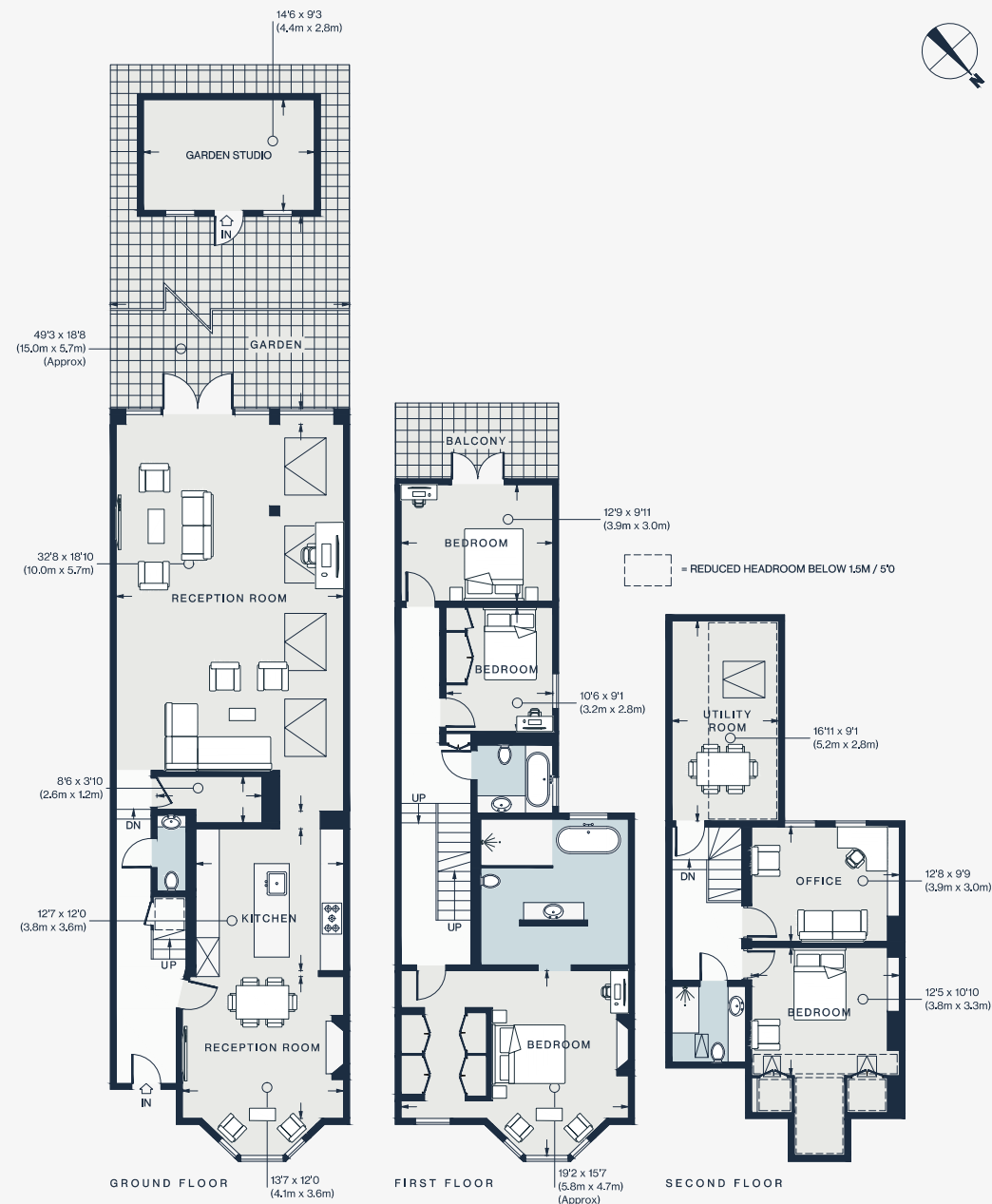
APPROXIMATE GROSS INTERNAL AREA

2,753 sq ft / 256 sq m

020 7221 7817

domusnova.com

LONDON | IBIZA



Floor plans are for illustrative purposes only and not to scale. Compliant with RICS code of measuring practice. Furniture layouts are indicative only. This property may be furnished, part-furnished or unfurnished. Please refer to your agent for details.