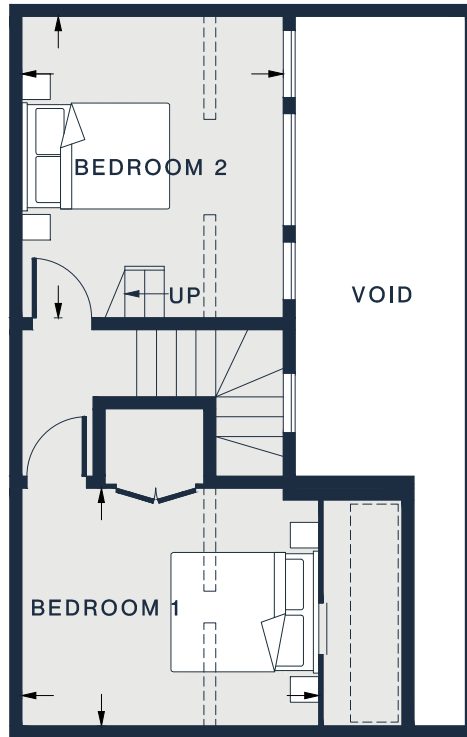
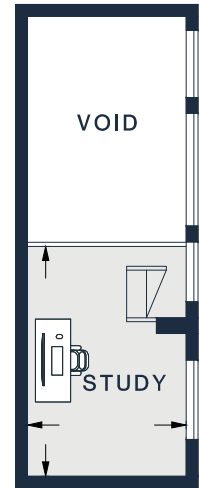


SECOND FLOOR



THIRD FLOOR



MEZZANINE FLOOR

RECEPTION
19'6 x 16'1 (5.9m x 4.9m)

KITCHEN
9'4 x 8'4 (2.8m x 2.5m)

BEDROOM 1
12'4 x 9'10 (3.7m x 3.0m)

BEDROOM 2
12'6 x 10'10 (3.8m x 3.3m)

STUDY
9'6 x 6'7 (2.9m x 2.0m)

Approx. Gross Internal Area = 886 sq ft / 82.3 sq m (Excluding Void)

Floor plans are for illustrative purposes only and not to scale. Compliant with RICS code of measuring practice. Furniture layouts are indicative only. This property may be furnished, part-furnished or unfurnished. Please refer to your agent for details.