

# DOMUS NOVA

Wrentham Avenue

Queens Park NW10

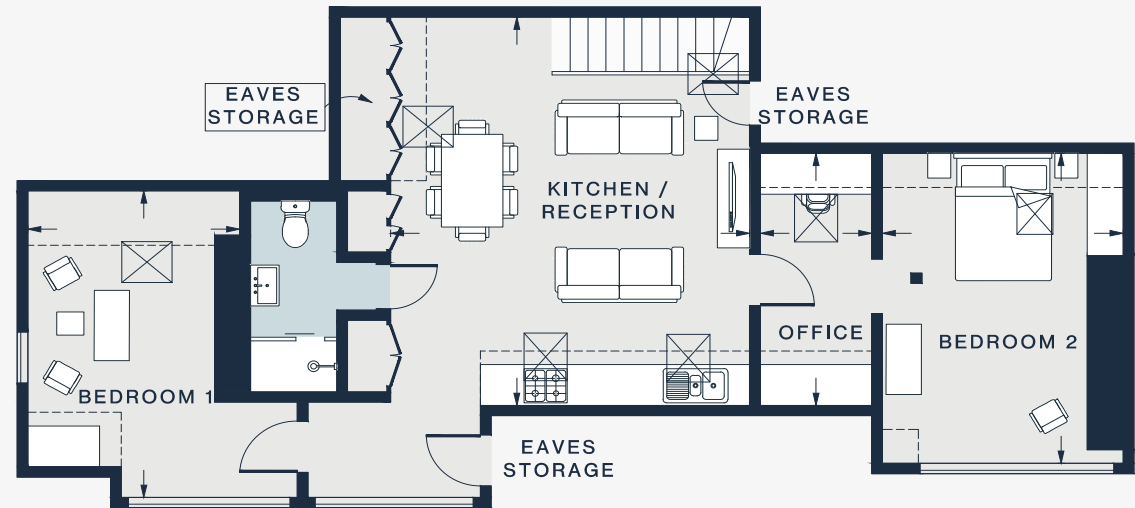
APPROXIMATE GROSS INTERNAL AREA

849 sq ft / 78.9 sq m

020 7727 1717

domusnova.com

LONDON | IBIZA



SECOND FLOOR



FIRST FLOOR

KITCHEN / RECEPTION ROOM

18'9 x 16'5 (5.7m x 5.0m)

OFFICE

12'1 x 8'2 (3.7m x 1.5m)

BEDROOM 1

14'10 x 9'8 (4.5m x 2.9m)

BEDROOM 2

14'10 x 11'0 (4.5m x 3.6m)

Approx. Gross Internal Area = 849 sq ft / 78.9 sq m

Floor plans are for illustrative purposes only and not to scale. Compliant with RICS code of measuring practice. Furniture layouts are indicative only. This property may be furnished, part-furnished or unfurnished. Please refer to your agent for details.