

DOMUS NOVA

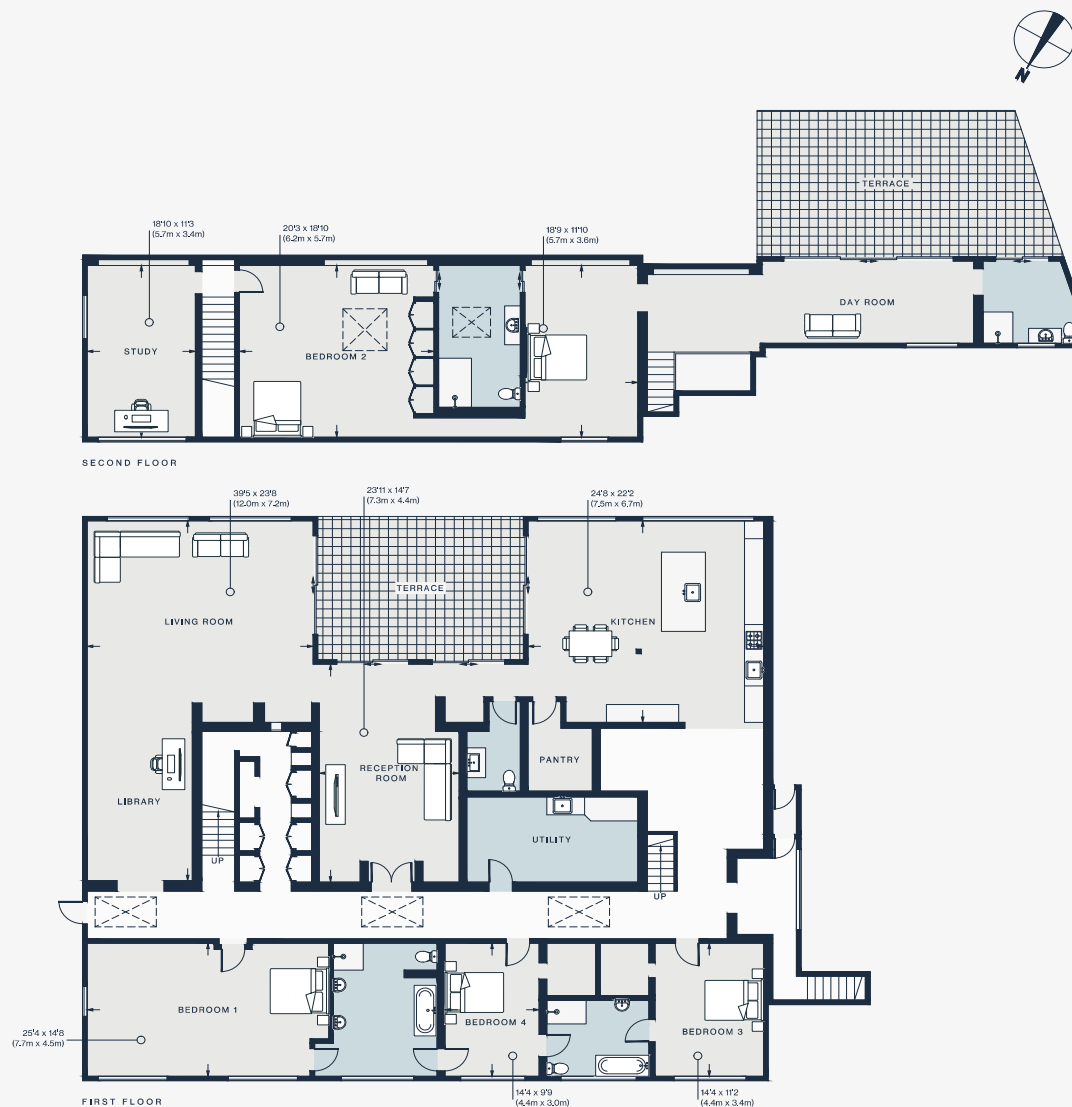
Wotton Road
Gladstone Park

APPROXIMATE GROSS INTERNAL AREA

5,711 sq ft / 530 sq m

020 7727 1717
domusnova.com

LONDON | IBIZA



Approx. Gross Internal Area = 5711 sq ft / 530 sq m

Floor plans are for illustrative purposes only and not to scale. Compliant with RICS code of measuring practice. Furniture layouts are indicative only. This property may be furnished, part-furnished or unfurnished. Please refer to your agent for details.