

# DOMUS NOVA

## Whitmore Gardens

Queens Park NW10

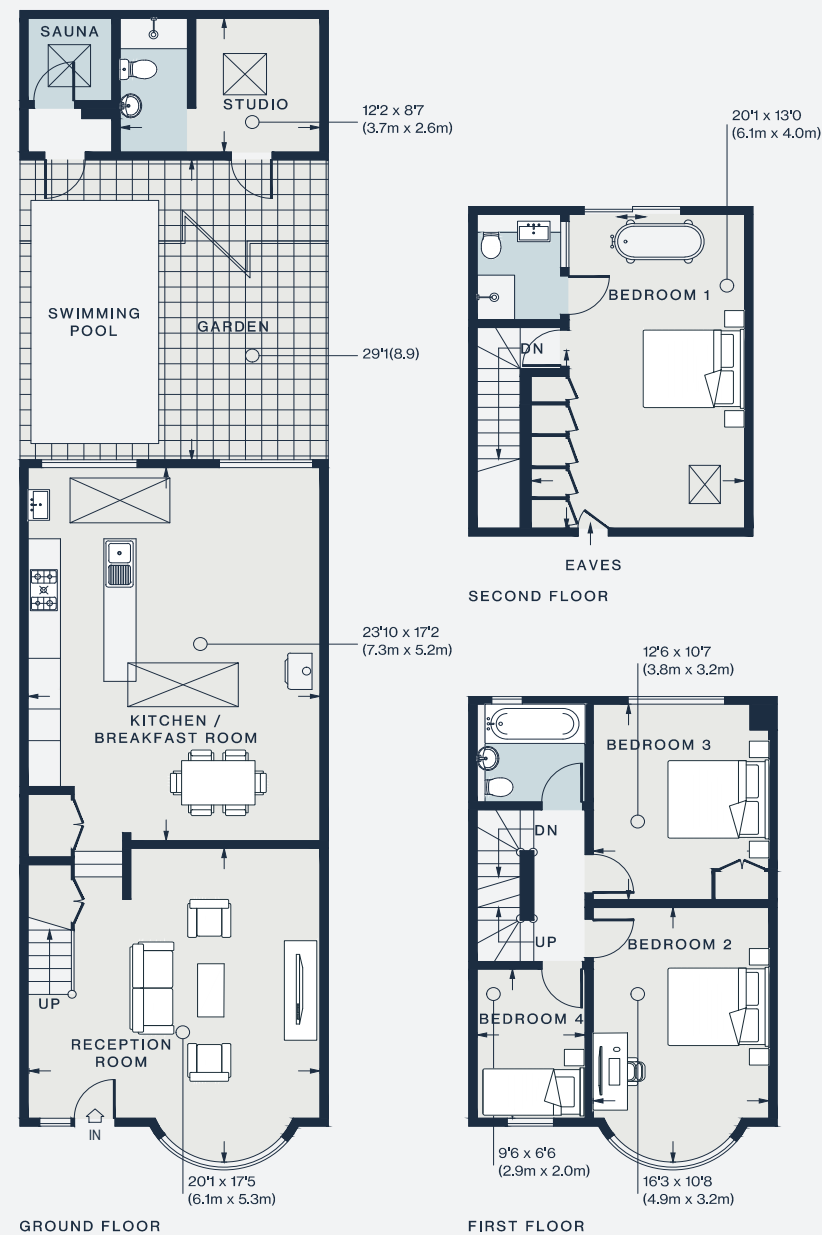
APPROXIMATE GROSS INTERNAL AREA

1,560 sq ft / 145 sq m

020 7727 1717

domusnova.com

LONDON | IBIZA



Approx. Gross Internal Area = 1,560 sq ft / 145 sq m  
Outbuilding = 151 sq ft / 14.0 sq m  
Total = 1,711 sq ft / 159 sq m

Floor plans are for illustrative purposes only and not to scale. Compliant with RICS code of measuring practice. Furniture layouts are indicative only. This property may be furnished, part-furnished or unfurnished. Please refer to your agent for details.