

# DOMUS NOVA

## Whitmore Gardens

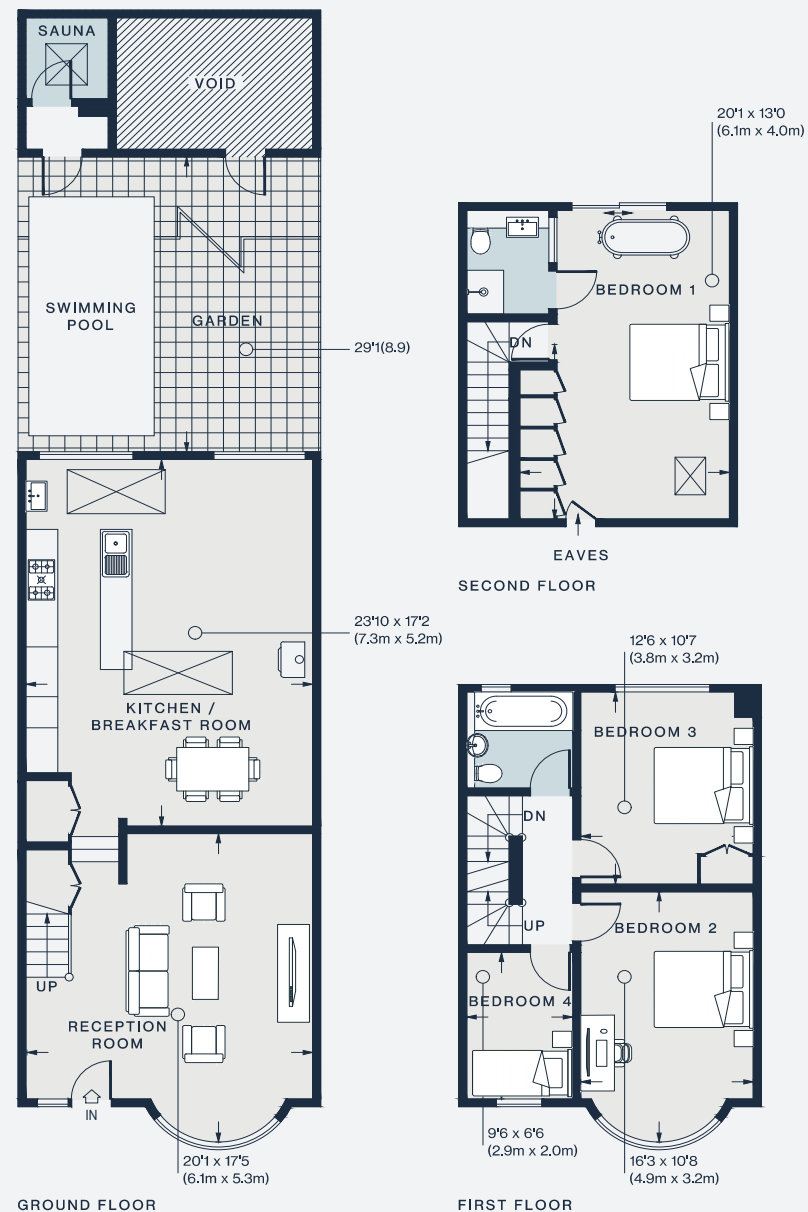
Queens Park NW10

APPROXIMATE GROSS INTERNAL AREA

1,560 sq ft / 145 sq m

020 7727 1717  
domusnova.com

LONDON | IBIZA



Approx. Gross Internal Area = 1,560 sq ft / 145 sq m  
Sauna = 43 sq ft / 4.0 sq m (Excluding Void)  
Total = 1,603 sq ft / 149 sq m

Floor plans are for illustrative purposes only and not to scale. Compliant with RICS code of measuring practice.  
Furniture layouts are indicative only. This property may be furnished, part-furnished or unfurnished. Please refer to your agent for details.