

# DOMUS NOVA

Westbourne Terrace

Bayswater W2

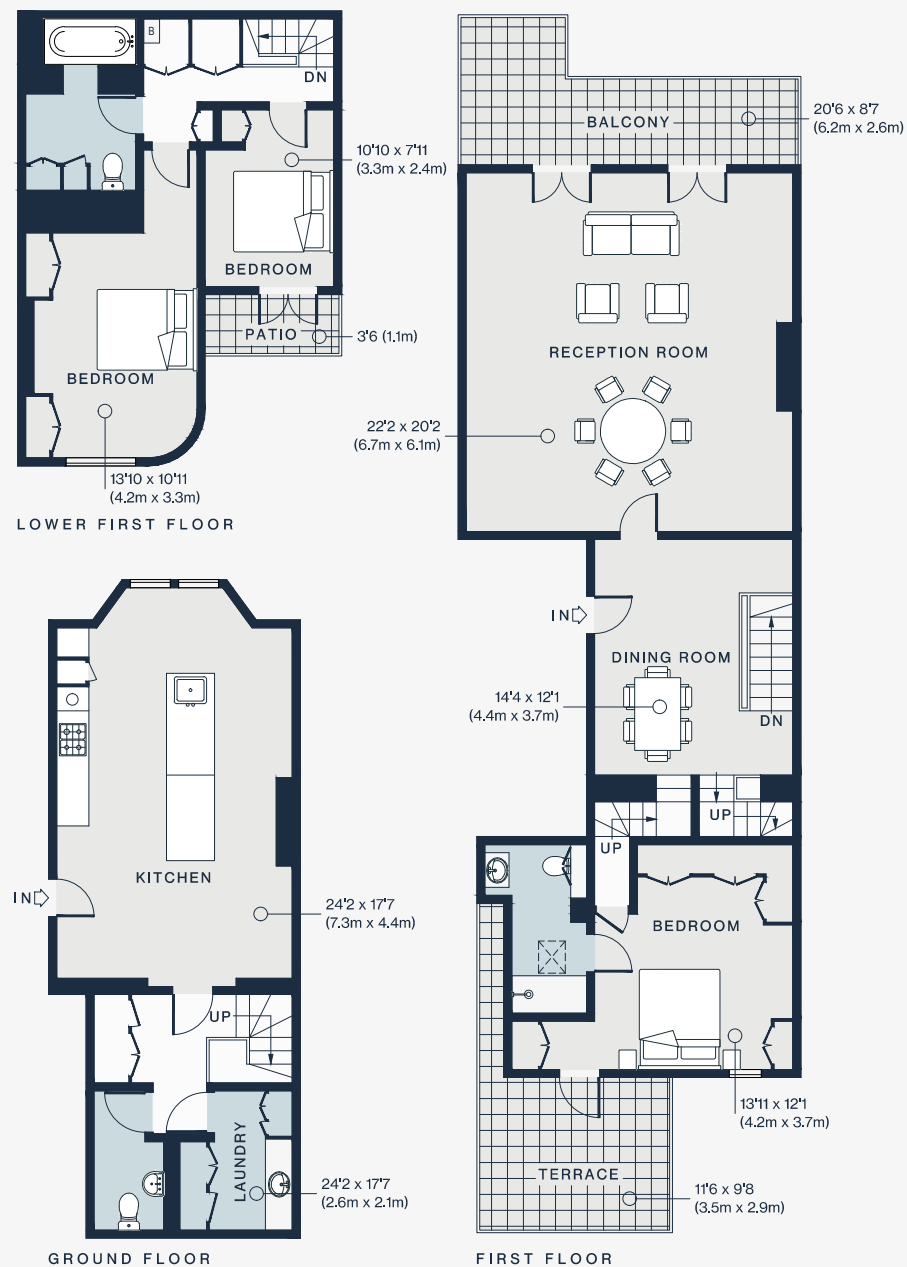
APPROXIMATE GROSS INTERNAL AREA

1849 sq ft / 171.8 sq m

020 7221 7817

domusnova.com

LONDON | IBIZA



Approx. Gross Internal Area = 1,849 sq ft / 171.8 sq m

Floor plans are for illustrative purposes only and not to scale. Compliant with RICS code of measuring practice.