

DOMUS NOVA



Westbourne Terrace, W2 – £2,000 p/w (LL)

In partnership with **BARNES**
INTERNATIONAL REALTY



Beneath the towering plane trees of Westbourne Terrace, a thoughtful interplay of contemporary design and period detail defines this third- and fourth-floor apartment.

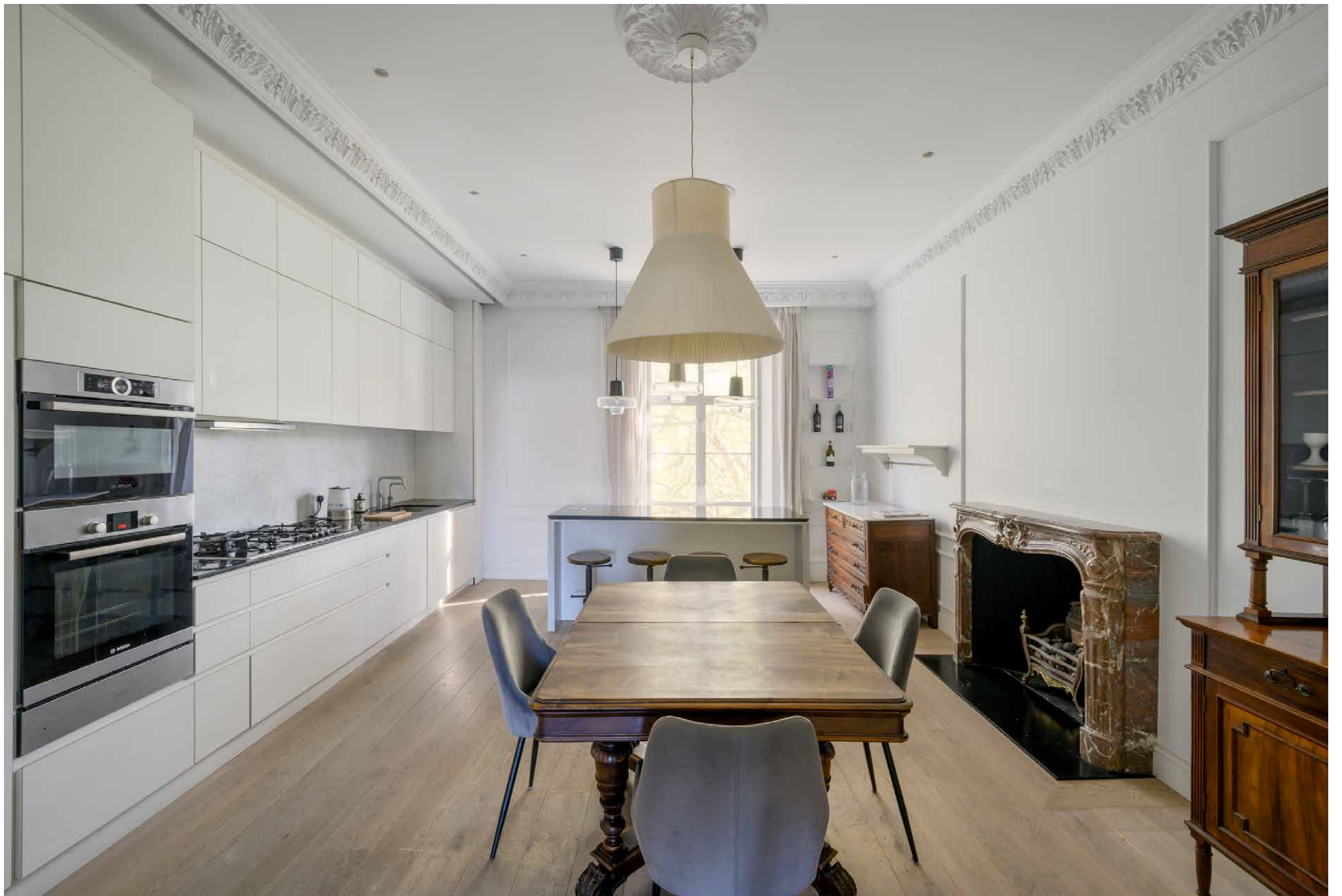
On the lower level, living spaces are composed with a careful balance of character and calm. In the reception room, gallery-white walls are offset by panel moulding and intricate cornicing, while a sash window draws in natural light. An amber marble fireplace provides a focal point, set alongside contemporary finishes.

Beyond, double doors open into a kitchen and dining room where clean-lined, handleless cabinetry conceals integrated appliances. A breakfast bar overlooks the tree-lined street, while heritage furniture and another marble fireplace soften the modern additions. A study, wrapped in dark wood, opens via French doors onto a private patio with elevated views across the surrounding neighbourhood.





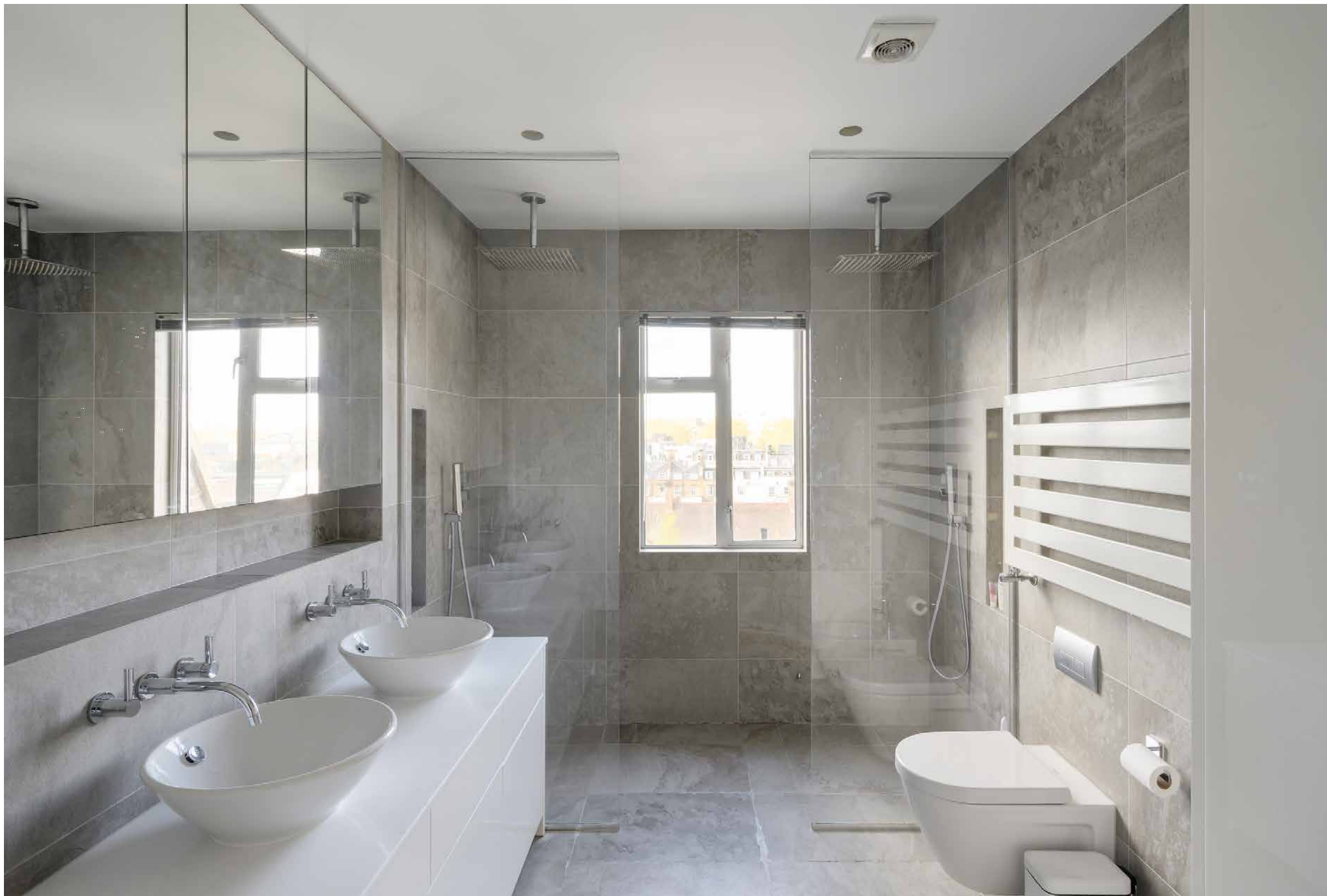




Upstairs, the sleeping quarters unfold beneath skylights, lending a sense of quiet retreat. The principal suite is pared-back and bright, with custom cabinetry and uninterrupted views stretching beyond the rooftops; original wooden floors run throughout. Its en suite bathroom is finished in grey stone, with a dual vanity and a generous walk-in double shower. Across the landing, two guest bedrooms echo the same calm material palette, served by a skylit family bathroom with a spa-like sensibility. A fourth bedroom on the lower floor offers flexibility – well-suited to guests or an au pair.















Second Floor = 91 sq ft / 8.4 sq m
Third Floor = 1064 sq ft / 98.8 sq m
Fourth Floor = 1011 sq ft / 93.9 sq m
Approx. Gross Internal Area = 2166 sq ft / 201.1 sq m

Property Details

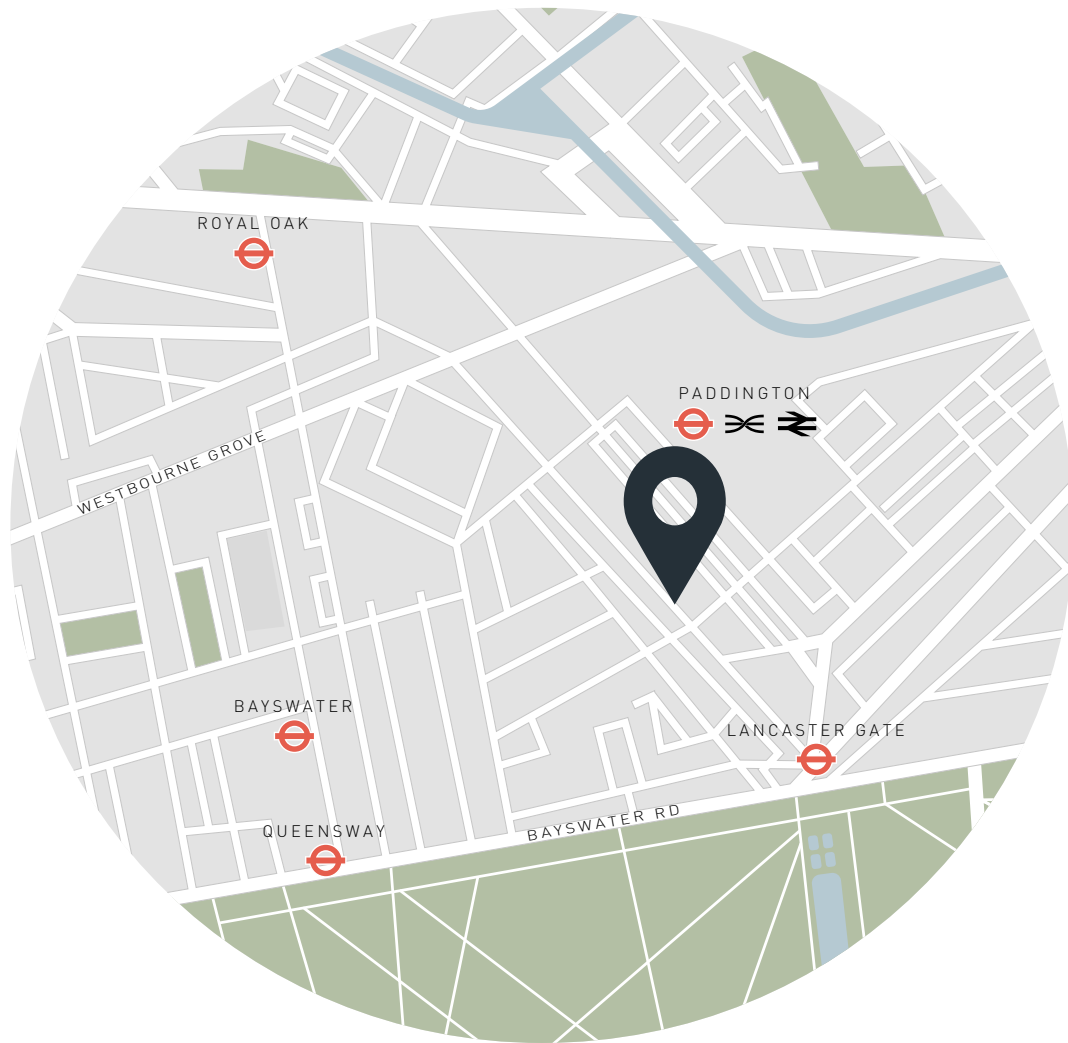
- 4 bedrooms, 4 bathrooms
- Open plan kitchen and dining room
- Spacious reception room
- Principal bedroom suite with walk-in-wardrobe
- Three guest bedrooms
- Family bathroom
- Shower room
- Study
- Private terrace
- City of Westminster

Approx. 2,166 sq ft / 201.1 sq m

EPC=C

Deposit: £12,000

Council Tax Band: G



Location

With Paddington station on your doorstep, Westbourne Terrace has enviable transport links into the rest of London and beyond. It's also poised for more meditative city moments: from Paddington Basin, walk along the Little Venice canal and admire the rows of colourful barges and handsome Georgian townhouses. There's plenty of waterside entertainment here – be sure to catch a performance at the Canal Café Theatre or Puppet Theatre Barge. Enjoy Hyde Park's green expanses before ending the day with a drink at the Cleveland Arms.

Paddington – 5 mins (Bakerloo, Circle, District, Hammersmith & City, Elizabeth Line)
Lancaster Gate – 10 mins (Central)



Who ——— we are

Forward-thinkers in property, design and culture, we're an estate agency that hits refresh.

Domus Nova was born out of a desire to do things differently; to break the traditional agency model and focus on design-led homes in London and Ibiza, all while delivering the highest levels of personal service.

Our story starts in the nineties when we founded Notting Hill's first boutique agency – and we continue to open the doors to the most remarkable spaces, revealing them to our like-minded community.

We want to help you live better – and believe considered design can do that. That's why we remain committed to building on our legacy, in collaboration with BARNES International, an established agency with a market-leading presence in 22 countries.

Uniting our local insight and curated portfolio with BARNES International's expansive reach, we can facilitate the best opportunities in not only London and Ibiza, but also across Europe, the US and further afield – whether that's a château in the South of France, a penthouse in New York, or a chalet in the Swiss Alps.



DOMUS NOVA

Specialising in London
and Ibiza's design-led homes

Let's talk

020 7727 1717

lettings@domusnova.com

The property particulars are a guide not statements. Descriptions, photographs, and plans are for guidance and should be checked by the prospective tenant. The Property is offered "subject to contract and references". No warranties, representations, or Tenancy is given by Domus Nova. Expenses incurred by a prospective tenant will not be reimbursed if the Landlord withdraws prior to the Tenancy Agreement being signed, dated and exchanged and cleared funds received. Furniture and other items shown in a property at viewing may belong to a current tenant. The prospective tenant should verify in writing which fixtures and fittings forms part of the Tenancy. Our full lettings disclaimer together with trading names and our [Privacy Policy](#) is shown on our website

© 2025 Domus Nova in partnership with BARNES International. All rights reserved.

In partnership with
BARNES
INTERNATIONAL REALTY