

DOMUS NOVA



Westbourne Park Villas W2

£1,500,000



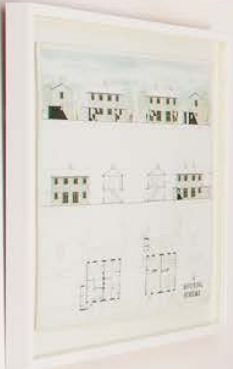
Loft-style living and eclectic interiors. This two-bedroom house for sale in Notting Hill styles a heritage framework with uplifting hues.

On a quiet corner of Westbourne Park, a compact courtyard plays host to a home with style. Built into its period brick façade, sage shiplap panelling frames the entrance to create a characterful first impression.

Inside, pastel tones produce a considered canvas for an eclectic trove of curios. In the ground floor reception room, natural light makes for an uplifting welcome. A dusty pink shade wraps around the walls, while neutral carpeting grounds brighter pops of colour.

Making the most of an inverted layout, an open-plan kitchen and reception room at the top of the home embraces loft-style living. Natural light flows effortlessly throughout, courtesy of skylights in the soaring vaulted ceiling. At one end, a light grey marble kitchen offers a cool contrast to pale peach walls. Integrated appliances and stainless steel finishes leave a clean feel, while striped fabric conceals open white cabinetry. Sat above the countertops, two windows look out across the neighbouring gardens. A bright seating space sits to the other side, backdropped by glass-panelled doors opening to a balconette.





DAVID
LOWE | DYLAN
JONES











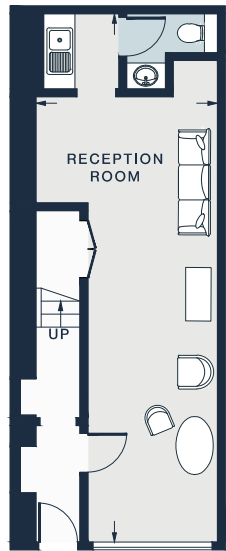
Across the first floor, whitewashed wooden floors sweep through two spacious bedrooms. In the principal, a pared back palette keeps things simple and serene. Elegant fitted wardrobes flank the entrance, while double doors opposite open to a Juliet balcony. A sense of tranquillity continues in the second bedroom. Sash windows invite in light, while grey painted column radiators positioned below create contrast. Enveloped in dark olive tones, a sophisticated family bathroom features a white tiled bathtub with overhead shower.

Sat between the bedrooms, a half-landing leads the way to a mini urban oasis – a secluded decked terrace.

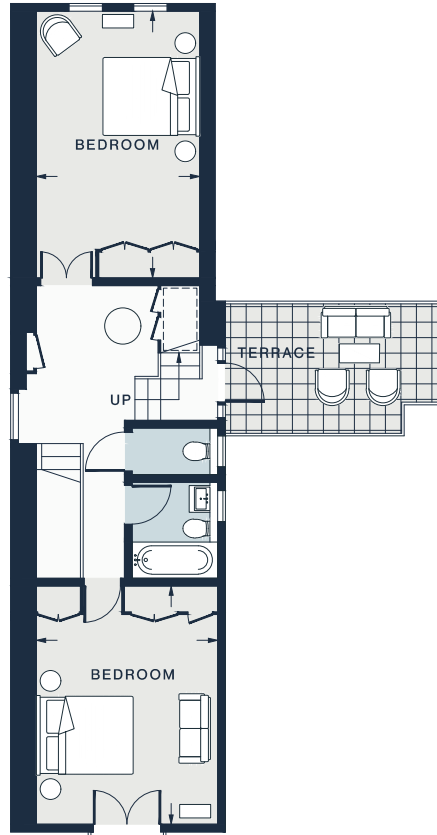








GROUND FLOOR



FIRST FLOOR



SECOND FLOOR

RECEPTION

33'6 x 11'7 (10.2m x 3.5m)

BEDROOM

15'4 x 11'5 (4.7m x 3.5m)

RECEPTION / KITCHEN

51'6 x 12'7 (15.7m x 3.84m)

BEDROOM

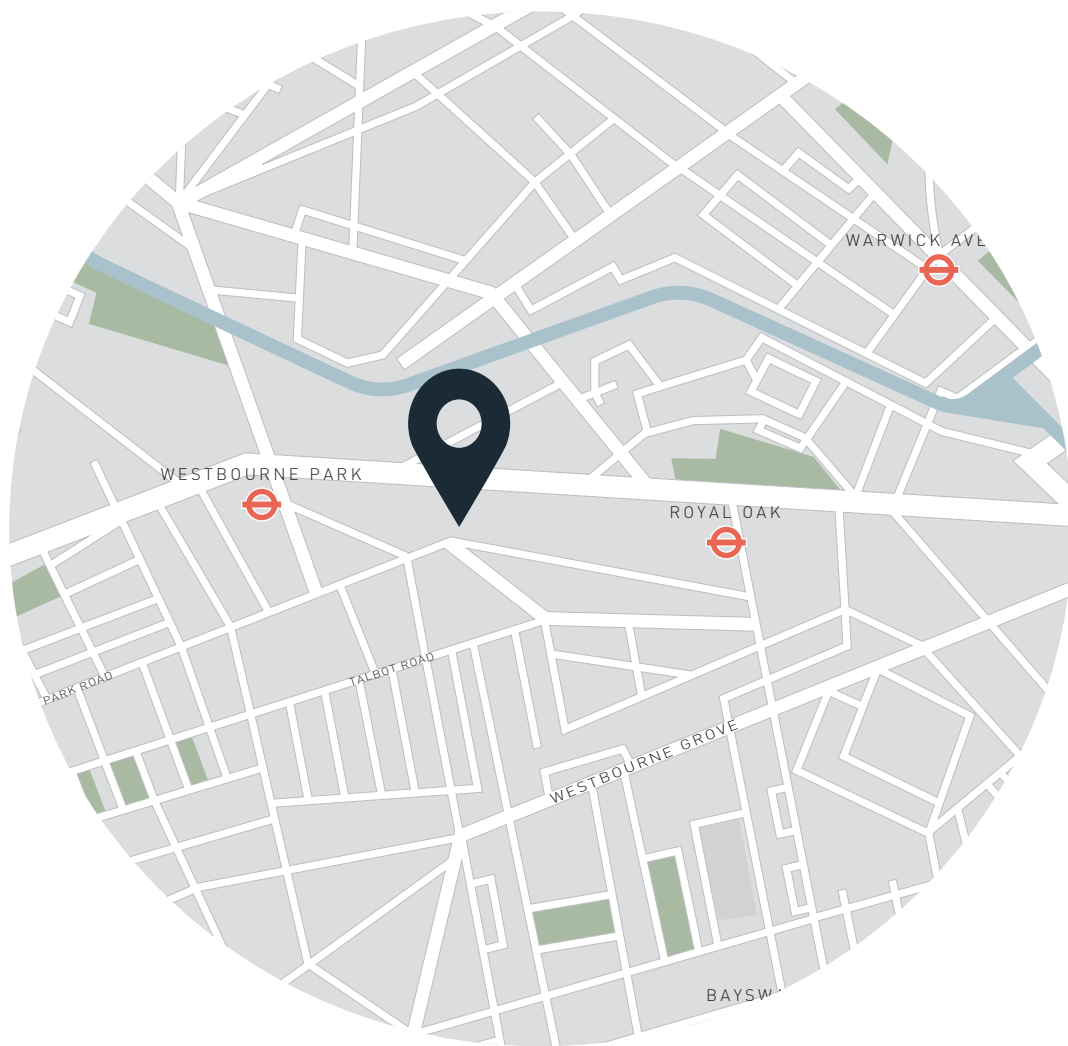
16'11 x 10'4 (5.2m x 3.1m)

Approx. Gross Internal Area = 1,610 sq ft / 149.6 sq m

Property Details

- Open-plan kitchen and reception room
- Additional reception room
- Two bedrooms
- Family bathroom
- Terrace
- City of Westminster

- Approx. 1,610 sq ft / 149.6 sq m
- EPC - C
- Council tax - G
- Freehold



Location

Westbourne Park Villas places you minutes away from the best of Notting Hill's independent boutiques and high-end restaurants. Wander down to Westbourne Grove for a coffee at Beam, followed by a stroll along the Grand Union Canal. On the weekends, browse the vintage stalls on Portobello Road. To end the evening, legendary pubs await just moments from your door – try The Cow for oysters and a Guinness or The Westbourne for a welcoming atmosphere.

Royal Oak – 6 mins

Westbourne Park – 7 mins

Specialising in London
and Ibiza's design-led homes

Let's talk
020 7221 7817
sales@domusnova.com
domusnova.com

The particulars above are a guide, not an offer or contract. Descriptions, photographs and plans are not statements or representations of fact. Measurements are approximate and not to scale. Prospective purchasers must verify the accuracy of the information within the particulars. Domus Nova does not give any representations or warranties, nor represent the Seller legally. Domus Nova has no liability, for any costs, losses or expenses incurred by the Seller or a prospective buyer relating to the sales and buying transaction.

Our Sales Disclaimer, trading names and privacy policy on how your data is processed and used is found in full on our website in our [Privacy Statement](#).

© Domus Nova 2023. All rights reserved.