

DOMUS NOVA



Westbourne Park Villas W2
£675,000



Pastel tones and contemporary design uplifts this one-bedroom apartment with a coveted Notting Hill postcode.

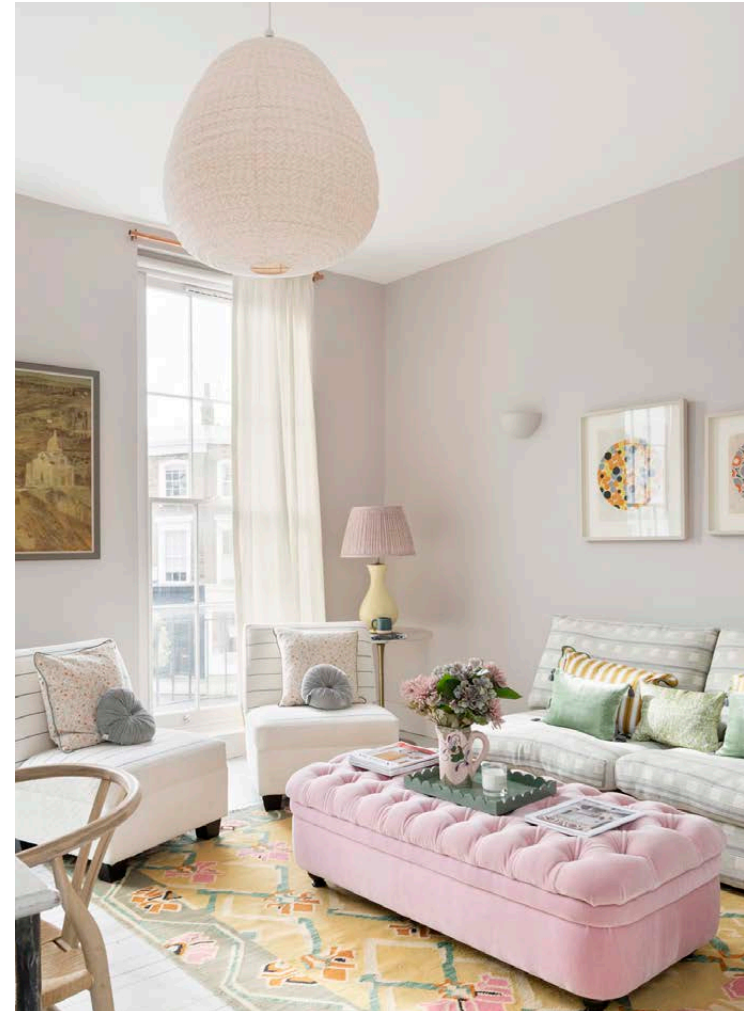
Behind a soft green façade, muted pastel hues produce a quietly sophisticated tone at Westbourne Park Villas. Designed to capitalise on the apartment's natural light, a soothing palette effortlessly uplifts here.

At the social heart of the home, whitewashed wooden floors and dusky pink walls present a considered canvas that instantly calms. Natural light filters through sash windows stretching from floor to ceiling, drawing a welcoming ambiance to the dining and reception space. Configured for seamless socialising, the kitchen sits subtly separated to the rear – a quiet echo of the exterior with sage cabinetry. Marble worktops add an air of refinement, while integrated appliances and a handleless design keeps things simple.





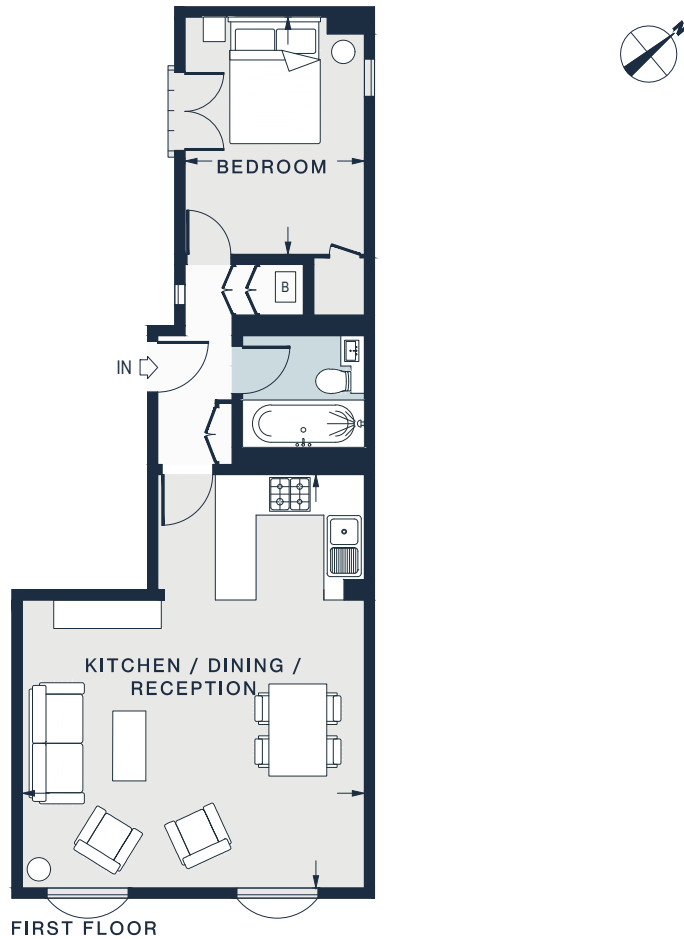




In the bedroom, the space has been conceived with an exceptional eye for detail and timeless design. Draw back curtains to reveal French doors, opening out a Juliet balcony. Shades of pink flow from here into the family bathroom, complete with a generous bathtub and convenient storage space.







FIRST FLOOR

KITCHEN / DINING / RECEPTION
20'1 x 16'6 (6.1m x 5.0m)

BEDROOM
11'5 x 8'8 (3.4m x 2.6m)

Approx. Gross Internal Area = 493 sq ft / 45.8 sq m

Property Details

Open-plan kitchen and reception room
Principal bedroom
Family bathroom
Juliet balcony
City of Westminster

Approx. 493 sq ft / 45.8 sq m
EPC - C
Tenure: Share of Freehold
Council Tax Band: G



Location

At Westbourne Park Villas, you're minutes from Notting Hill's independent boutiques, artisan cafés and high-end restaurants. Start the day with a morning run around the Grand Union Canal. Refuel with brunch at Farmacy or Granger and Co. On weekends, head to Portobello Road to browse vintage stalls and embrace Notting Hill's bohemian side. End the evening with dinner at Cépage[s] Wine Bistro, then a drink at one of west London's most legendary pubs, The Cow. Be back home within a minute.

Royal Oak – 6 mins (Circle, Hammersmith & City)

Specialising in London
and Ibiza's design-led homes

Let's talk
020 7221 7817
sales@domusnova.com
domusnova.com

The particulars above are a guide, not an offer or contract. Descriptions, photographs and plans are not statements or representations of fact. Measurements are approximate and not to scale. Prospective purchasers must verify the accuracy of the information within the particulars. Domus Nova does not give any representations or warranties; nor represent the Seller legally. Domus Nova has no liability, for any costs, losses or expenses incurred by the Seller or a prospective buyer relating to the sales and buying transaction.

Our Sales Disclaimer, trading names and privacy policy on how your data is processed and used is found in full on our website in our [Privacy Statement](#).

© Domus Nova 2024. All rights reserved.