

DOMUS NOVA



Westbourne Park Villas W11

£6,000 pw - Short let



This three-bedroom home is bound by minimalist design and punchy artwork, with a roof terrace overlooking one of Notting Hill's coveted residential pockets.

Positioned in one of Notting Hill's peaceful enclaves and spread across three spacious floors, there's an easygoing feel to this reimagined period home.

White wood floors draw you into the open-plan reception room, where a trio of full-height sash windows infuse the social space with natural light. An array of living and dining seating are poised for entertaining, all maintaining the property's signature minimalist tones.

Whitewashed walls set the stage for a host of playful contemporary artwork. Through an archway, there's a quiet study complete with an indoor exercise bike. The calming atmosphere is effortlessly continued into the kitchen, where ceiling beams afford a light rustic touch to the streamlined surfaces and modern appliances.













A hallway glows blush pink, courtesy of a stylised neon light. It leads upstairs to the three bedrooms, each with a tranquil aesthetic and atmosphere.

The principal bedroom is finished with a row of integrated wardrobes and bold wall prints. A free-standing tub is inviting at the centre of the en suite bathroom. The two guest bedrooms are complete with plenty of storage – the third-floor room leading directly onto the decked roof terrace. Capitalise on London's sunny days with a state-of-the-art barbecue, ideal for alfresco cooking.





















WESTBOURNE
PARK
VILLAS W2
201-203 WESTBOURNE

THE WESTBOURNE

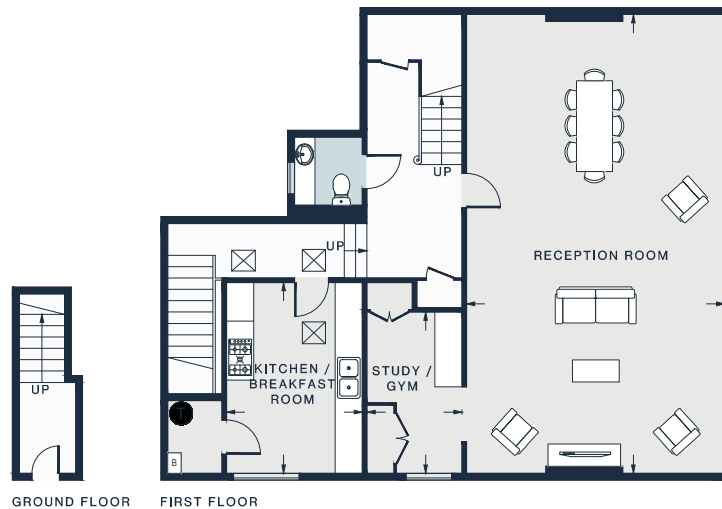
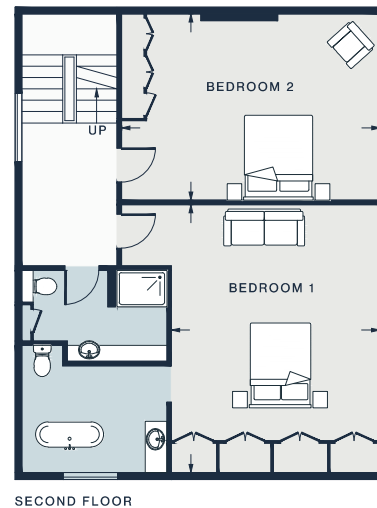
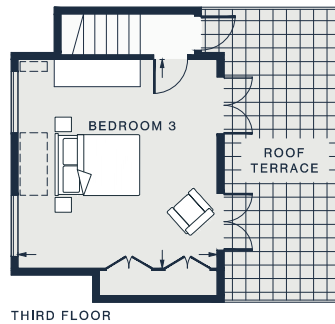
KIDS
DRINK
FREE

Top Maintenance

0208
935 5614

Ashton

2



RECEPTION ROOM
33'2 x 18'8 (10.1m x 5.7m)

STUDY / GYM
11'8 x 6'11 (3.5m x 2.1m)

BEDROOM 2
18'8 x 13'5 (5.7m x 4.1m)

KITCHEN / BREAKFAST ROOM
13'9 x 9'10 (4.2m x 3.0m)

BEDROOM 1
19'4 x 15'1 (5.9m x 4.6m)

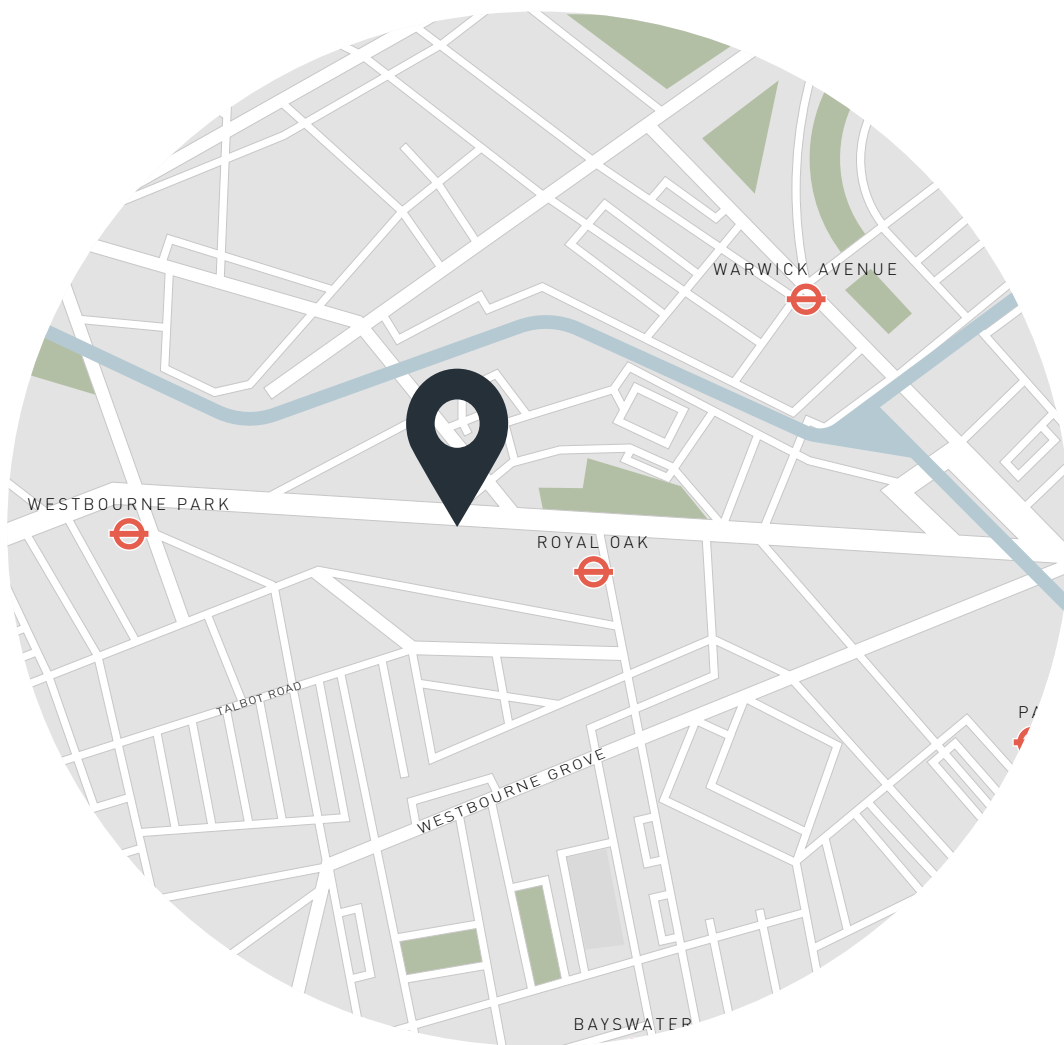
BEDROOM 3
15'1 x 14'5 (4.6m x 4.4m)

Approx. Gross Internal Area = 2,288 sq ft / 213 sq m

Property Details

Open-plan reception and dining room
Contemporary kitchen
Principal bedroom suite
Two further bedrooms
One further bathroom
One further WC
Roof terrace
City of Westminster

Approx 2,288 sq ft / 213 sq m
Council Tax Band - G
EPC - D
Deposit Payable - £24,000



Location

Westbourne Park Villas is a peaceful stepping stone to Notting Hill's biodynamic eateries, boutique shops and artisanal coffee spots. Venture to Westbourne Grove for brunch at Jusu or Granger & Co., before refreshing your wardrobe at Sézane or Reformation. Enjoy an uplifting workout at Bodyism or SoulCycle followed by a film at Electric Cinema. Conclude an evening with a drink at legendary pubs The Cow or The Westbourne, set just below your home.

Royal Oak - 6 mins

Specialising in London
and Ibiza's design-led homes

Let's talk
020 7727 1717
lettings@domusnova.com
domusnova.com

The property particulars are a guide not statements. Descriptions, photographs, and plans are for guidance and should be checked by the prospective tenant. The Property is offered "subject to contract and references". No warranties, representations, or Tenancy is given by Domus Nova. Expenses incurred by a prospective tenant will not be reimbursed if the Landlord withdraws prior to the Tenancy Agreement being signed, dated and exchanged and cleared funds received. Furniture and other items shown in a property at viewing may belong to a current tenant. The prospective tenant should verify in writing which fixtures and fittings forms part of the Tenancy. Our full lettings disclaimer together with trading names and our [Privacy Policy](#) is shown on our website