

DOMUS NOVA



Westbourne Park Villas W2

£999,950



Pastel tones and natural light create a serene space for living at this two-bedroom duplex apartment for sale in Notting Hill.

Arranged across the top two floors of a traditional townhouse, this inviting home is awash with soothing colour inside and out.

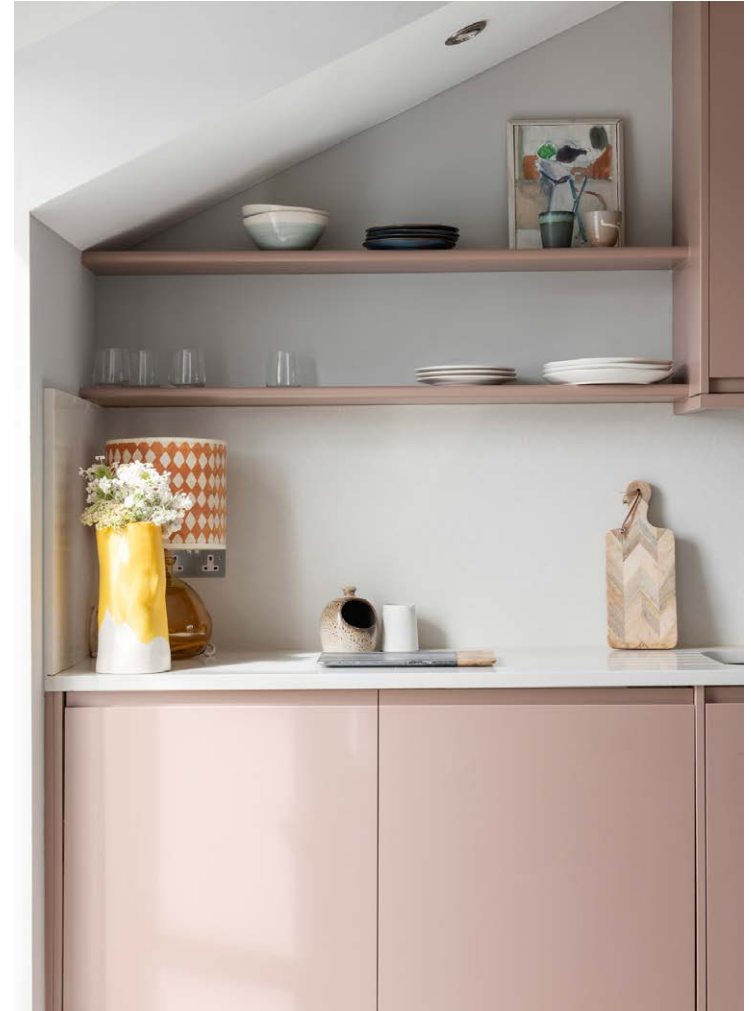
An elegant painted staircase leads up to the open-plan kitchen and reception room on the top floor, where a palette of pink shades invites relaxation. From either side dual aspect French doors welcome in reams of natural light and brings the outside in.

Divided between areas for sitting and dining, white floorboards accentuate the proportions at play. An L-shaped contemporary kitchen is neatly incorporated into the space, alongside Bosch and Smeg integrated appliances. Dusty pink cabinetry is juxtaposed with white stone countertops and tiled flooring, balancing both form and function. Continue out onto the south-west facing Juliette balcony which is a magnet for the afternoon sun.









Downstairs in the principal bedroom, expansive sash windows and soft hues ensure a restful atmosphere, while floor-to-ceiling wardrobes keep clutter at bay. The family bathroom features a generous bathtub with a shower overhead. The second bedroom shares the calming ambiance, with its tasteful palette and access to a large terrace.

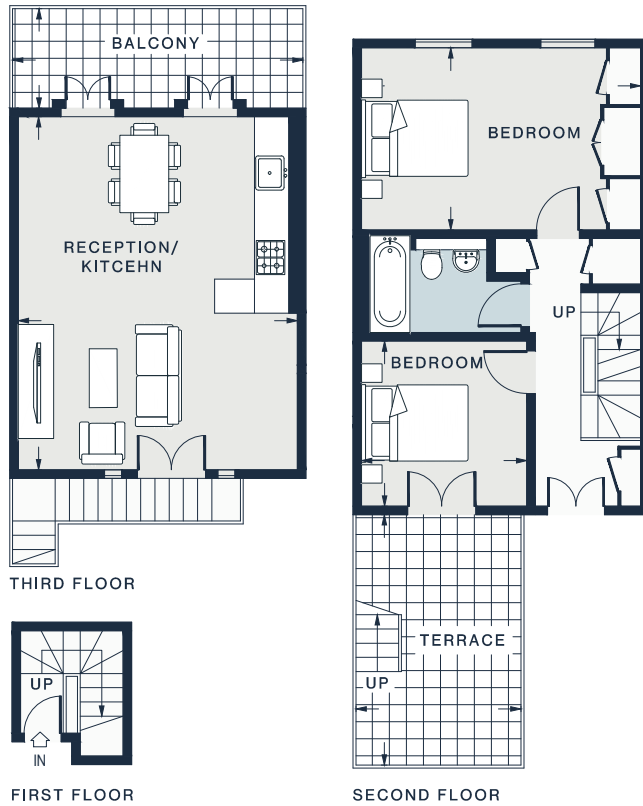












RECEPTION/ KITCHEN
20'3 x 16'0 (6.2m x 4.9m)

BEDROOM
16'5 x 10'7 (5.0m x 3.2m)

BEDROOM
9'8 x 9'7 (2.9m x 2.9m)

Approx. Gross Internal Area = 805 sq ft / 74.8 sq m

Floor plans are for illustrative purposes only and not to scale. Compliant with RICS code of measuring practice.

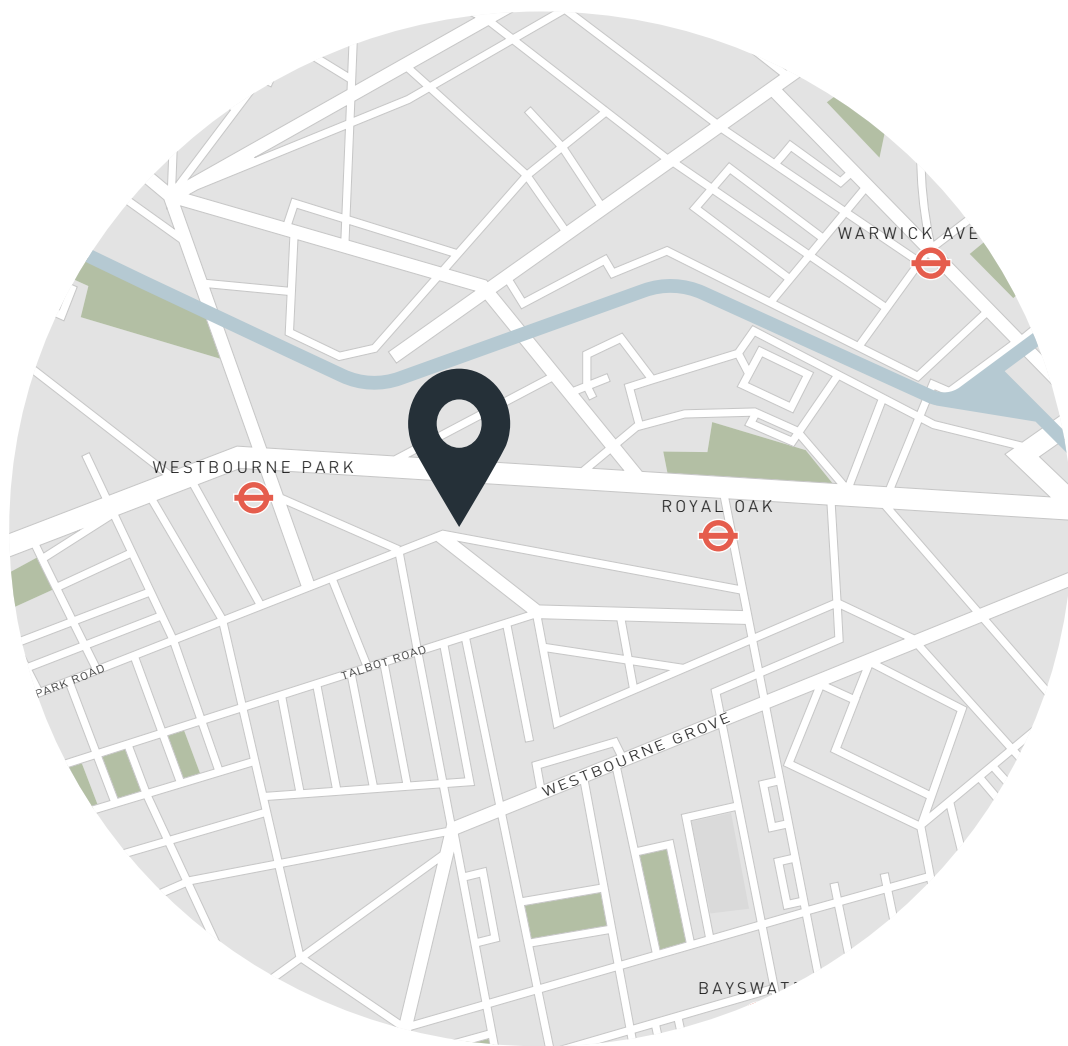
Property Details

- Open-plan kitchen and reception room
- Principal bedroom with built in wardrobes
- One further bedroom
- Family bathroom
- Balcony
- Roof terrace
- City of Westminster

Approx. 805 sq ft / 74.8 sq m

EPC - C

Share of freehold - circa 971 years



Location

Westbourne Park Villas places you minutes away from Notting Hills independent boutiques, artisan cafes and high-end restaurants. Start the day with a coffee at Beam followed by a stroll along the Grand Union Canal. On the weekends, wander down Portobello Road to browse the vintage stalls and embrace the bohemian atmosphere. To end the evening there are no shortage of legendary pubs to settle in either – try The Cow for oysters and a Guinness or The Westbourne for a welcoming atmosphere, both just moments from your front door.

Royal Oak – 6 mins

Westbourne Park – 7 mins

Specialising in London
and Ibiza's design-led homes

Let's talk
020 7221 7817
sales@domusnova.com
domusnova.com

The particulars above are a guide, not an offer or contract. Descriptions, photographs and plans are not statements or representations of fact. Measurements are approximate and not to scale. Prospective purchasers must verify the accuracy of the information within the particulars. Domus Nova does not give any representations or warranties, nor represent the Seller legally. Domus Nova has no liability, for any costs, losses or expenses incurred by the Seller or a prospective buyer relating to the sales and buying transaction.

Our Sales Disclaimer, trading names and privacy policy on how your data is processed and used is found in full on our website in our [Privacy Statement](#).

© Domus Nova 2023. All rights reserved.