

DOMUS NOVA

Westbourne Park Villas

Notting Hill W2

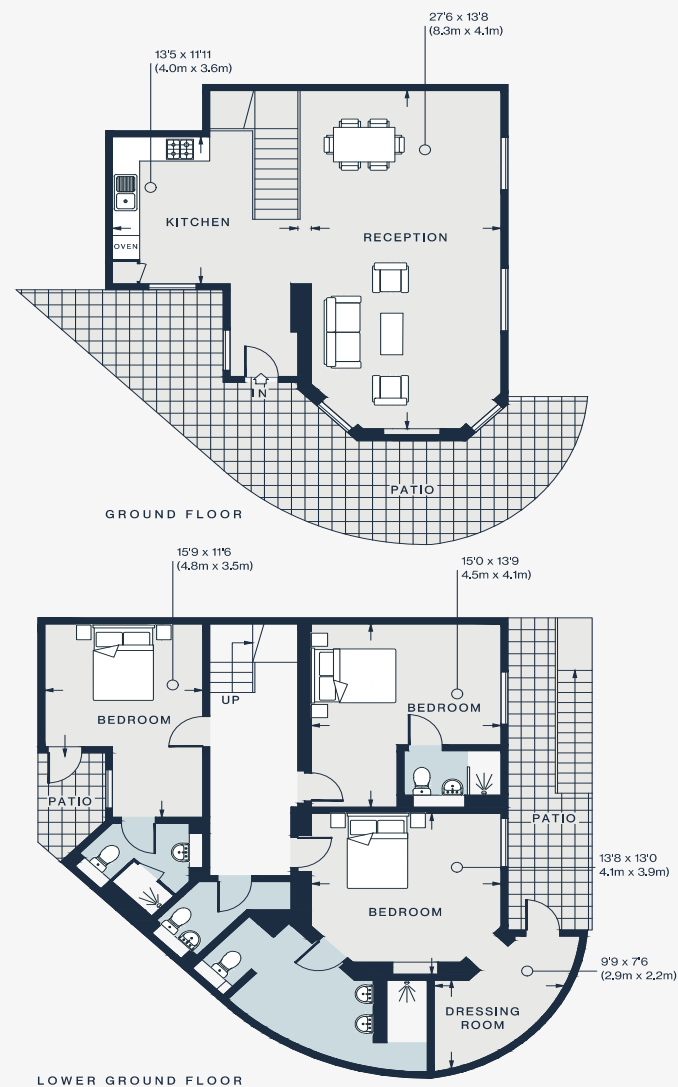
APPROXIMATE GROSS INTERNAL AREA

1,647 sq ft / 153.0 sq m

020 7727 1717

domusnova.com

LONDON | IBIZA



Approx. Gross Internal Area = 1647 sq ft / 153.0 sq m

Floor plans are for illustrative purposes only and not to scale. Compliant with RICS code of measuring practice. Furniture layouts are indicative only. This property may be furnished, part-furnished or unfurnished. Please refer to your agent for details.