

DOMUS NOVA

Westbourne Park Road

Notting Hill W11

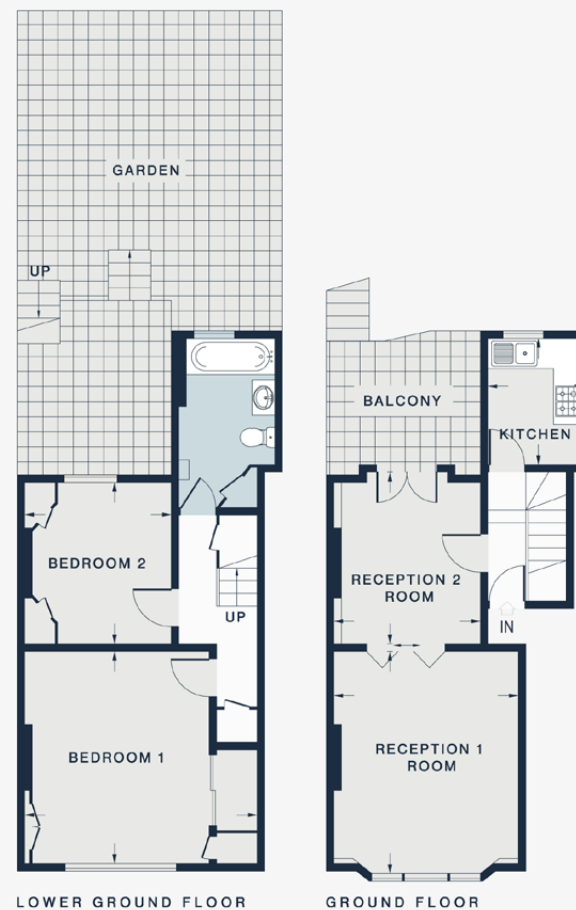
APPROXIMATE GROSS INTERNAL AREA

813 sq ft / 75.5 sq m

020 7727 1717

domusnova.com

LONDON | IBIZA



LOWER GROUND FLOOR

GROUND FLOOR

BEDROOM 1
15'2 x 13'7 (4.6m x 4.1m)

BEDROOM 2
10'5 x 9'6 (3.2m x 2.9m)

BATHROOM
11'0 x 5'9 (3.3m x 1.7m)

RECEPTION ROOM 1
14'6 x 12'0 (4.4m x 3.6m)

RECEPTION ROOM 2
11'2 x 9'9 (3.4m x 2.9m)

KITCHEN
8'3 x 6'5 (2.5m x 1.9m)

Floor plans are for illustrative purposes only and not to scale. Compliant with RICS code of measuring practice. Furniture layouts are indicative only. This property may be furnished, part-furnished or unfurnished. Please refer to your agent for details.