

# DOMUS NOVA



Westbourne Park Road, W2 – £2,650 p/w (LL) / £3,800 (SL)

In partnership with **BARNES**  
INTERNATIONAL REALTY



Distinguished and design-led. This sophisticated three-bedroom triplex places form with function.

Organic textures. Original features. Open-plan living.

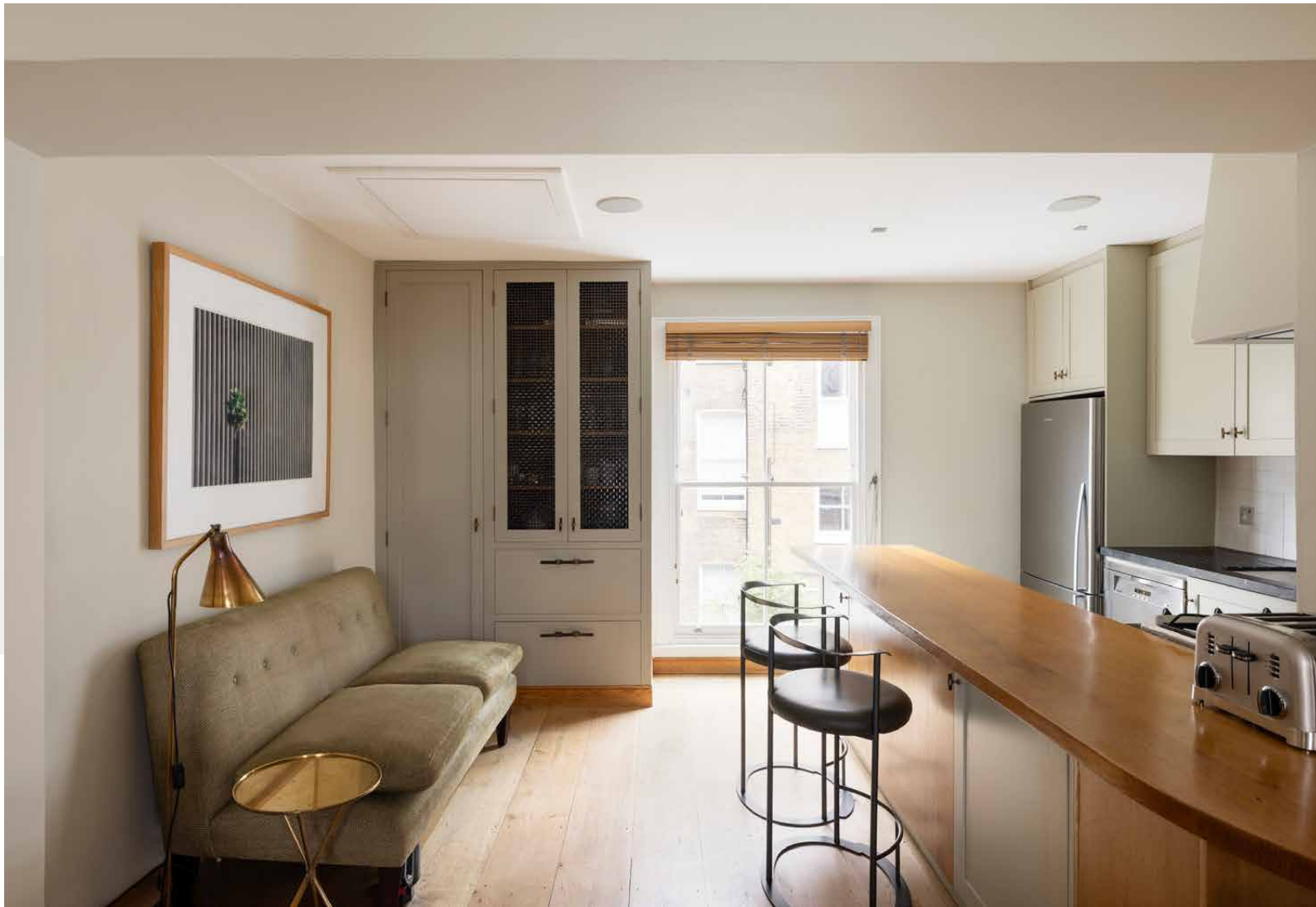
Wrapped in the stucco-accented brickwork of a period townhouse, this stylish apartment pairs classic and contemporary. A staircase ascends to a first-floor landing framed on two sides by large doorways.

Grand proportions add depth to an understated dining room which is decked out in neutral tones and grounded by a fireplace. The space is imbued with an uplifting feel due to a soaring sash window that floods the plan with light.

Hardwood flooring flows into a peninsula kitchen.

A large, south-facing window is generous with natural light, illuminating considered design details. A spacious breakfast bar provides seating for four.

Integrated appliances create clean lines while textures of stone and wood pop against stainless steel cabinetry. An additional dual-aspect reception room could be used as a study and features tranquil tones and a contrasting dark fireplace. This level also features a small balcony at the front of the property.







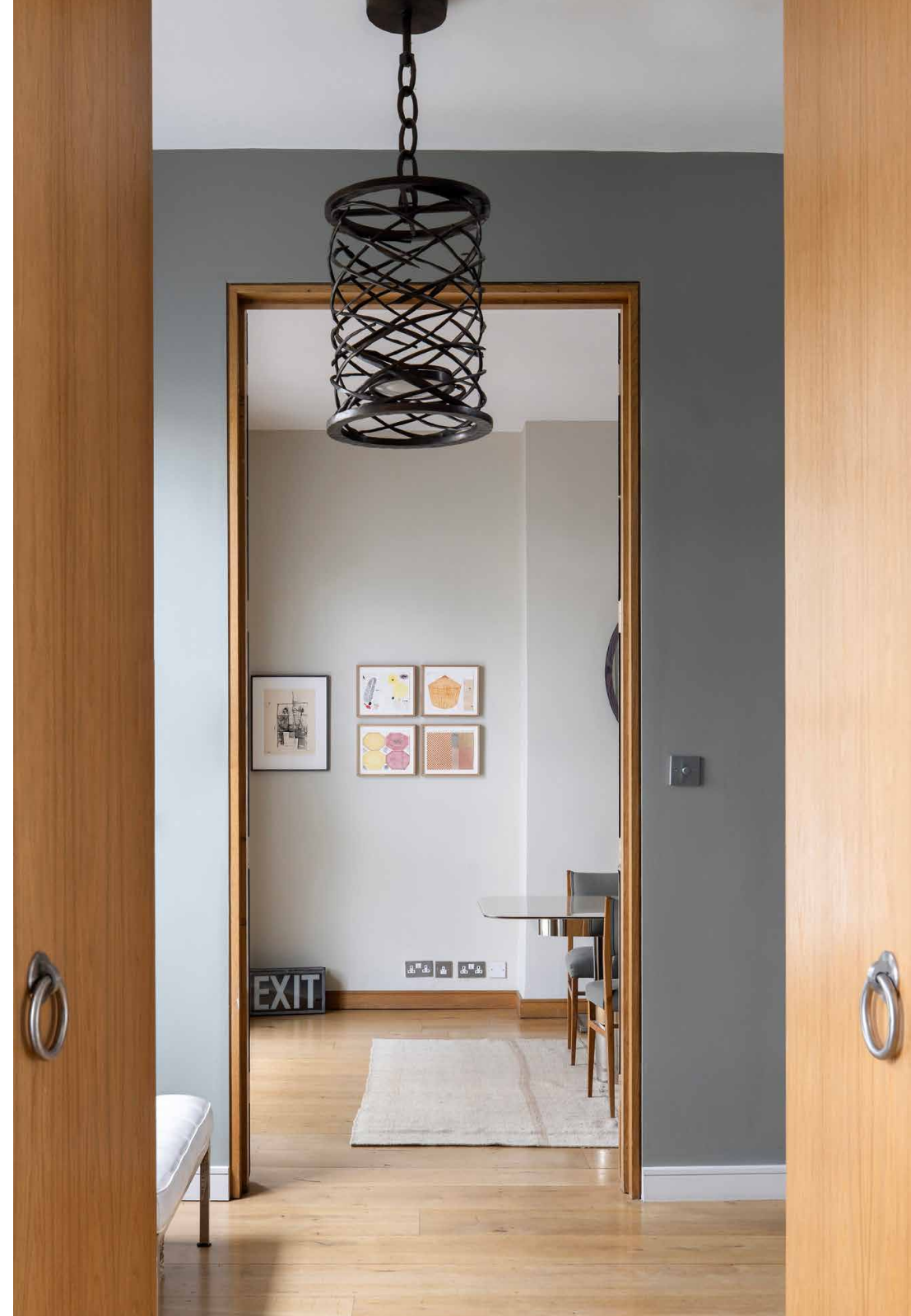




Light pink walls hit a calming yet playful note in the principal bedroom suite. Minimalistic fitted storage is recessed into the walls, reducing visual noise. Doors slide to reveal a distinctive skylit ensuite bathroom.

Enveloped in stone, a sunken bath sits next to a separate, rainfall shower. A monolithic floating dual vanity governs over the space. Opposite, doors lead out to a small balcony.

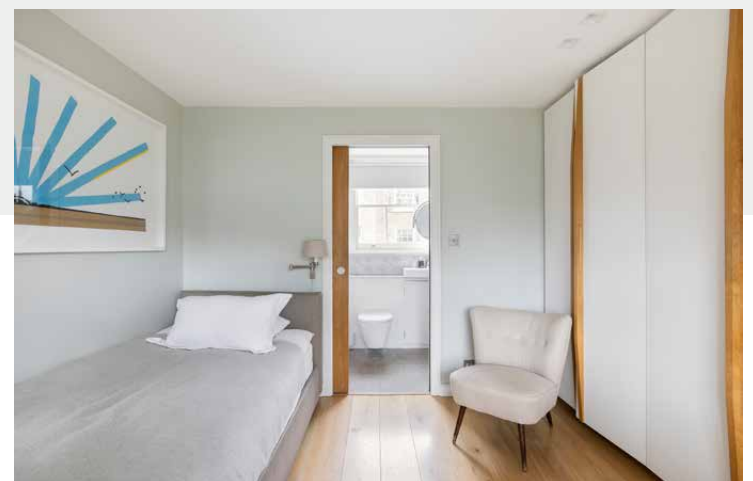
One further bedroom on this level features a sisal carpet, integrated wardrobes and a white marble ensuite. On the top floor, an expansive guest bedroom incorporates natural light and, through a concealed entrance, a stylish ensuite bathroom.















## Property Details

Open-plan kitchen and reception room  
 Additional reception room  
 Principal bedroom suite  
 Two further en suite bedrooms  
 Two balconies  
 Royal Borough of Kensington & Chelsea Approx

Approx 1,967 sq ft / 183 sq m  
 EPC - E  
 Council Tax Band - G  
 Deposit Payable - £15,900 (LL) / £15,200 (SL)

Approx. Gross Internal Area = 1967 sq ft / 183.0 sq m

Floor plans are for illustrative purposes only and not to scale. Compliant with RICS code of measuring practice.  
 Furniture layouts are indicative only. This property may be furnished, part-furnished or unfurnished. Please refer to your agent for details.



## Location

On Westbourne Park Road, you're moments from Notting Hill's independent boutiques, artisan cafes and upscale restaurants. Start the day with a morning stroll along the Grand Union Canal. Lunch at Farm Girl or Sunday in Brooklyn. On weekends, head to Portobello Road to browse vintage stalls and embrace Notting Hill's bohemian side. Conclude the evening at one of West London's most legendary pubs, The Cow. Be home in five minutes.

Nearest tube:  
Royal Oak - 3 mins



# Who ——— we are

Forward-thinkers in property, design and culture, we're an estate agency that hits refresh.

Domus Nova was born out of a desire to do things differently; to break the traditional agency model and focus on design-led homes in London and Ibiza, all while delivering the highest levels of personal service.

Our story starts in the nineties when we founded Notting Hill's first boutique agency – and we continue to open the doors to the most remarkable spaces, revealing them to our like-minded community.

We want to help you live better – and believe considered design can do that. That's why we remain committed to building on our legacy, in collaboration with BARNES International, an established agency with a market-leading presence in 22 countries.

Uniting our local insight and curated portfolio with BARNES International's expansive reach, we can facilitate the best opportunities in not only London and Ibiza, but also across Europe, the US and further afield – whether that's a château in the South of France, a penthouse in New York, or a chalet in the Swiss Alps.



# DOMUS NOVA

Specialising in London  
and Ibiza's design-led homes

Let's talk

020 7727 1717

[lettings@domusnova.com](mailto:lettings@domusnova.com)

---

The property particulars are a guide not statements. Descriptions, photographs, and plans are for guidance and should be checked by the prospective tenant. The Property is offered "subject to contract and references". No warranties, representations, or Tenancy is given by Domus Nova. Expenses incurred by a prospective tenant will not be reimbursed if the Landlord withdraws prior to the Tenancy Agreement being signed, dated and exchanged and cleared funds received. Furniture and other items shown in a property at viewing may belong to a current tenant. The prospective tenant should verify in writing which fixtures and fittings forms part of the Tenancy. Our full lettings disclaimer together with trading names and our [Privacy Policy](#) is shown on our website

© 2025 Domus Nova in partnership with BARNES International. All rights reserved.

*In partnership with*  
**BARNES**  
INTERNATIONAL REALTY