

DOMUS NOVA



Westbourne Park Road W11

£4,350,000



This four-bedroom stucco-fronted townhouse for sale is a lesson in contemporary finesse – and puts you in the heart of Notting Hill.

Arranged over five floors of an imposing Notting Hill townhouse, this immaculate home draws on its generous volumes to deliver considered living spaces designed for family life. Contemporary finishes are combined with period features throughout to bring a sense of timelessness to the interiors.

Slate grey cornicing accentuates the lofty ceiling height in the double reception room – a more formal space for entertaining or kicking back in front of the fire. Occupying the entire floor below, the open-plan dining room and kitchen is similarly expansive and well-considered. Streamlined cabinets, integrated appliances and a marble-topped island make light work of entertaining, with space to seat a crowd.

When the weather obliges, slide back the bi-folding doors to the quiet patio garden. High walls bring a welcome sense of privacy. Tucked away at the back, there's a separate office that's ideal for home working.











A basement media room provides the entertainment once you've logged off for the day. An atmospheric space with panelled walls, dim the lights for the silver screen experience. A guest bedroom and bathroom are also found on this level.

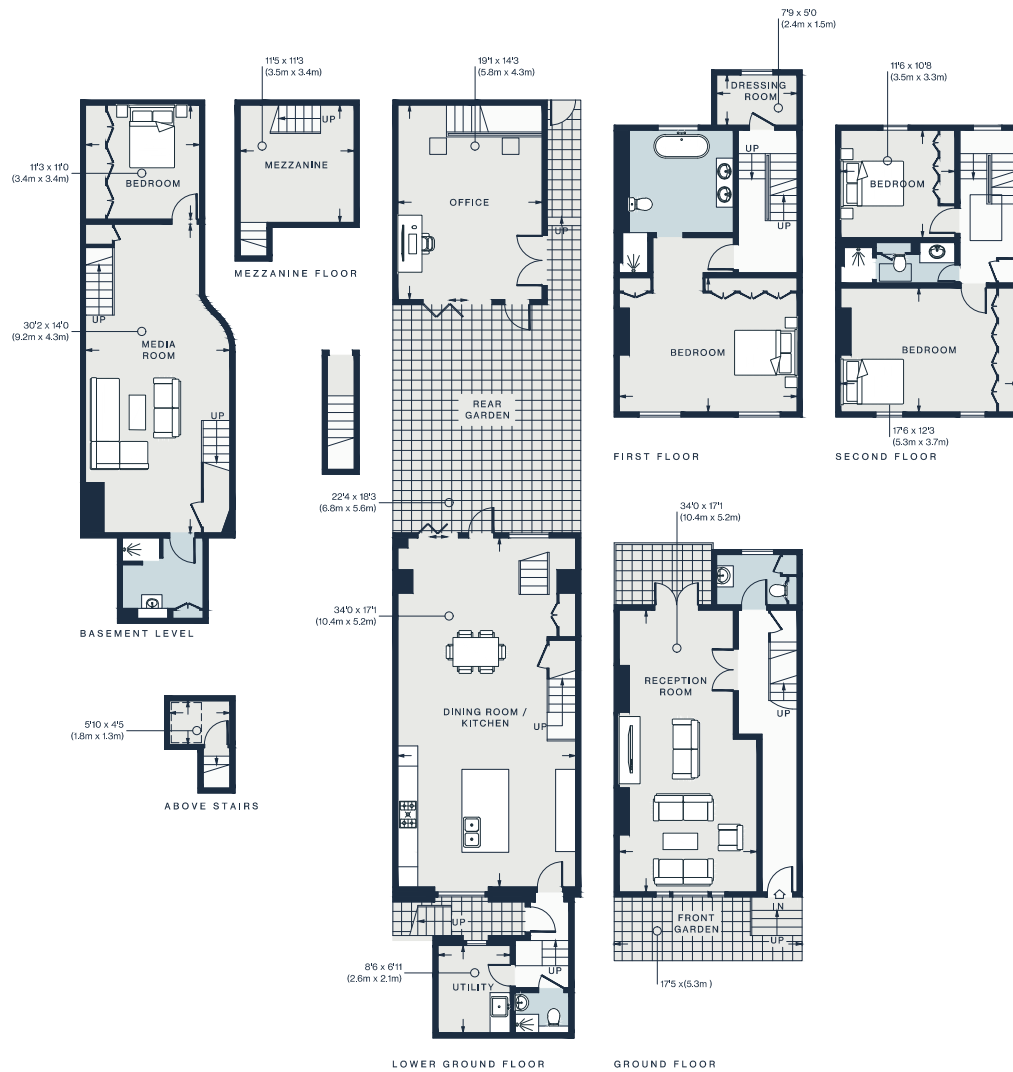
Occupying the entire first floor, the principal bedroom exudes a sense of opulence. Tactile wood panelling and soft carpet bring a thoroughly inviting feel – there's even a working fireplace for the colder months. A row of fitted wardrobes leads the way to an en suite bathroom with a spa-like finish. Think freestanding bathtub, a floor-to-ceiling mirrored wall and double basins. On the second floor, two further bedrooms with fitted storage share a shower room.











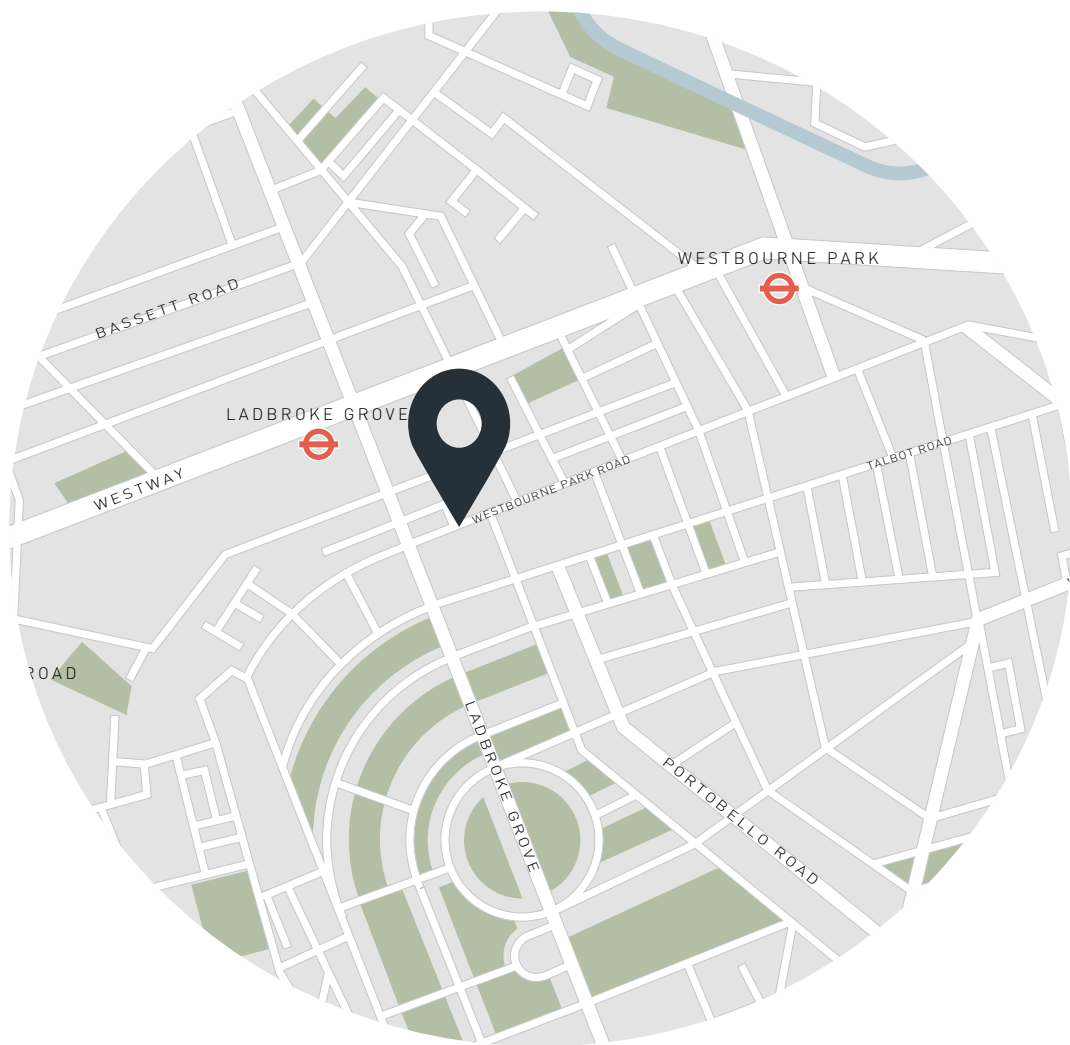
Property Details

- Formal double reception room
- Contemporary kitchen and dining room
- Principal bedroom suite
- Three further bedrooms
- Three further bathrooms
- Media room
- Patio garden
- Garden office separate to main house
- Utility room
- The Royal Borough of Kensington & Chelsea

Approx. 3,334 sq ft / 310 sq m
Freehold
EPC - D
Council tax - H

Approx. Gross Internal Area = 3334 sq ft / 310 sq m

Floor plans are for illustrative purposes only and not to scale. Compliant with RICS code of measuring practice.



Location

At Westbourne Park Road, you're minutes away from Notting Hill's independent boutiques, artisan cafés and high-end restaurants. Start the day with a morning run along the Grand Union Canal or through Kensington Gardens, then refuel with a seasonal lunch at Caractère just down the road. On the weekends, head to Portobello Road to browse the vintage stalls. There's no shortage of legendary pubs either – try The Oak for some of the best pizza around or The Cow for oysters, Guinness and a lively atmosphere.

Ladbroke Grove – 4 mins (Circle, Hammersmith & City)

Specialising in London
and Ibiza's design-led homes

Let's talk
020 7221 7817
sales@domusnova.com
domusnova.com

The particulars above are a guide, not an offer or contract. Descriptions, photographs and plans are not statements or representations of fact. Measurements are approximate and not to scale. Prospective purchasers must verify the accuracy of the information within the particulars. Domus Nova does not give any representations or warranties, nor represent the Seller legally. Domus Nova has no liability, for any costs, losses or expenses incurred by the Seller or a prospective buyer relating to the sales and buying transaction.

Our Sales Disclaimer, trading names and privacy policy on how your data is processed and used is found in full on our website in our [Privacy Statement](#).

© Domus Nova 2023. All rights reserved.