

DOMUS NOVA



Westbourne Park Road W11

£995 p/w Long Let

Pared-back minimalism set for easy city living, this home vaunts a heritage footprint elevated by contemporary design. Enter the raised ground floor into a double reception room, where soaring ceilings adorned with decorative cornicing are illuminated through dual-aspect windows.

Pale sage-grey walls lend attention to the open feature fireplace – an inviting focal point. Sweeping floors lead through to a dining space. From here, open French windows to the decked balcony, which descends to the garden below. Next door, the kitchen is minimalist in style and tranquil in feel. Through the window, look onto the garden; a secluded and serene environment envisaged for alfresco entertaining, framed with red brick walls and verdant foliage.



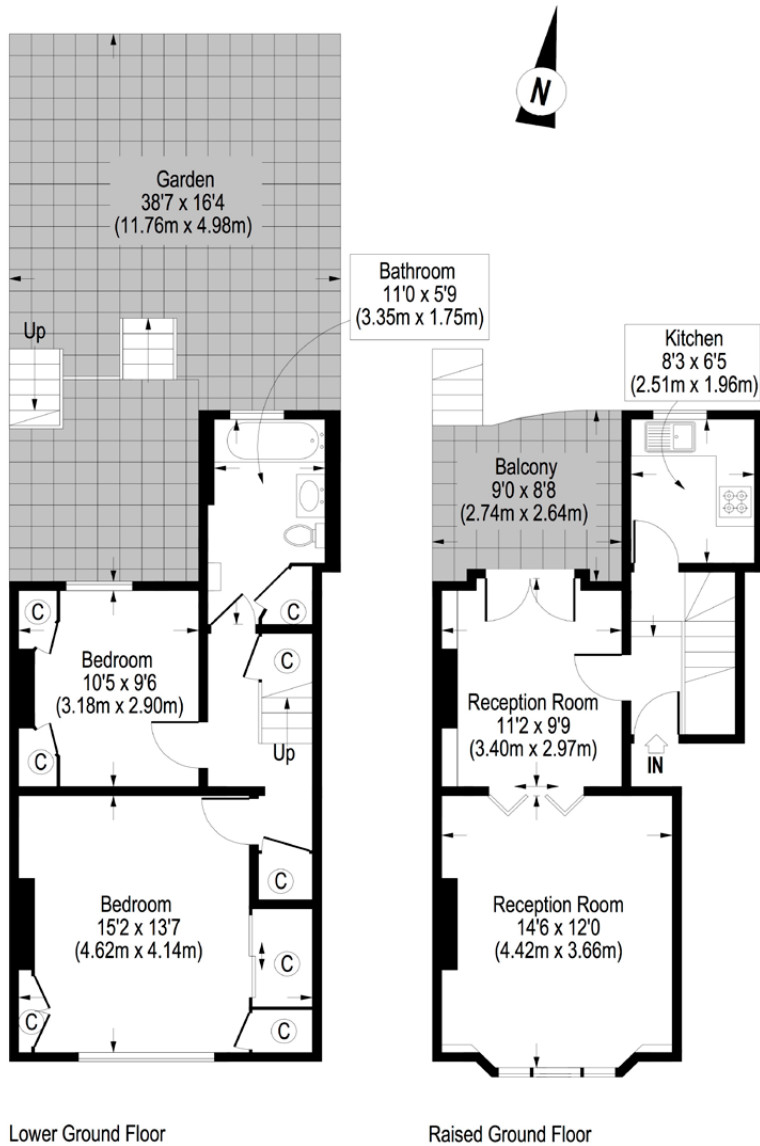


Downstairs, the master bedroom is filled with light through south-facing sash windows. There's plenty of storage, including a wardrobe set behind a sliding pocket door. A guest bedroom next door shares the same muted palette and relaxing character of the master. A family bathroom, finished with neutral tiling, serves these rooms.







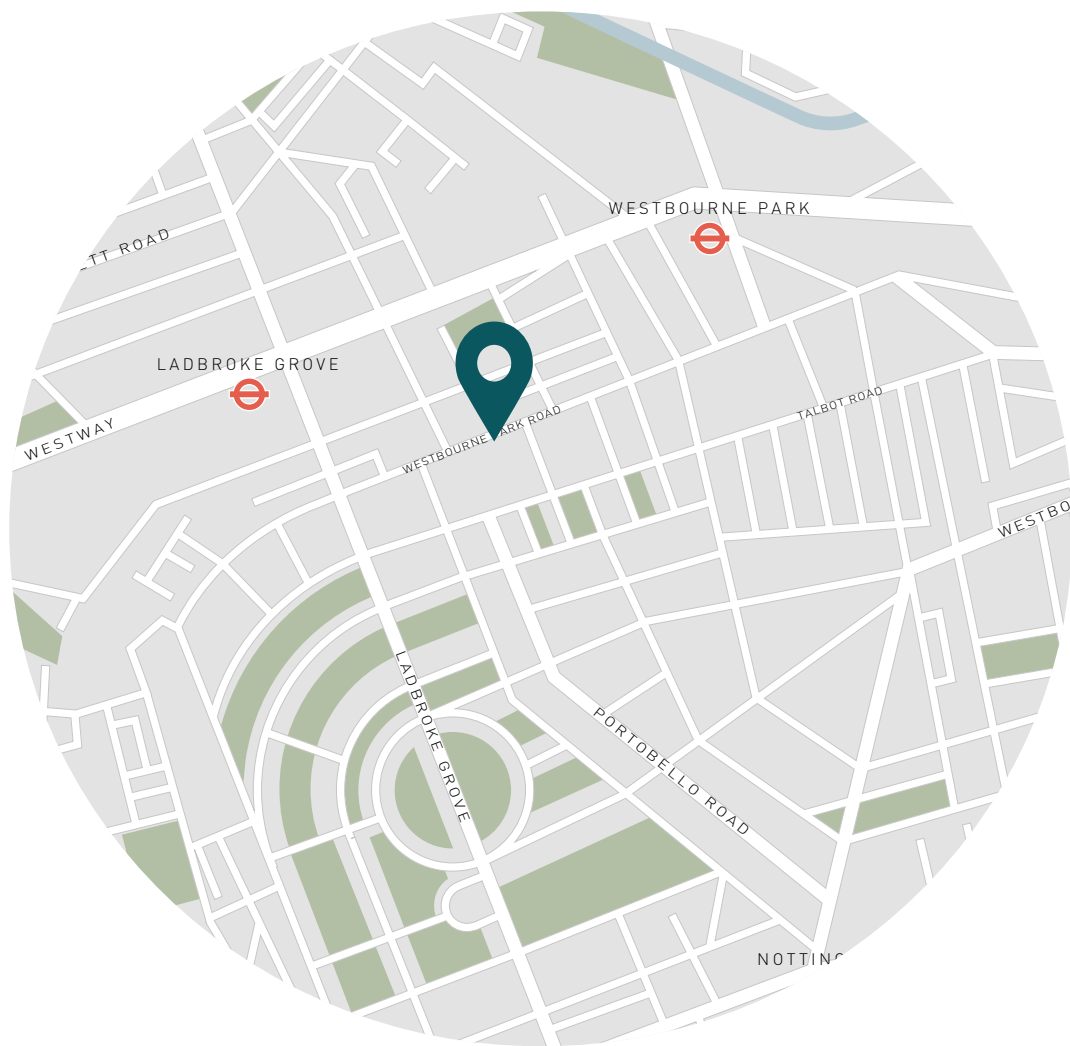


Property Details

- Double reception room
- Contemporary kitchen
- Master bedroom
- Guest bedroom
- Family bathroom
- Garden
- Balcony
- Royal Borough of Kensington & Chelsea
- Approx. 813 sq ft / 75.5 sq m. EPC=D

Approximate Gross Internal Area 813 Sq.Ft. / 75.5 Sq.M.

Floor Plans are illustrative purposes only and not to scale.
Compliant with RICS code of measuring practice.



Location

This home lies on a quintessential Notting Hill street, lined with period townhouses sporting stucco frontages and cast-iron railings. Portobello Road is on your doorstep to browse antique stores and sample global cuisine from the coveted food market. Head up a little further to Golborne Road: a pastry from Lisboa, then Flax for stylish linen pieces or Le Labo for a new fragrance. A film at Electric Cinema and a trip to The Elgin completes an evening – home in one minute.

Nearest Tube:

Ladbroke Grove – 4 mins

Specialising in London
and Ibiza's design-led homes.

Let's talk

020 7727 1717

lettings@domusnova.com

domusnova.com