

# DOMUS NOVA

Westbourne Park Road

Notting Hill W11

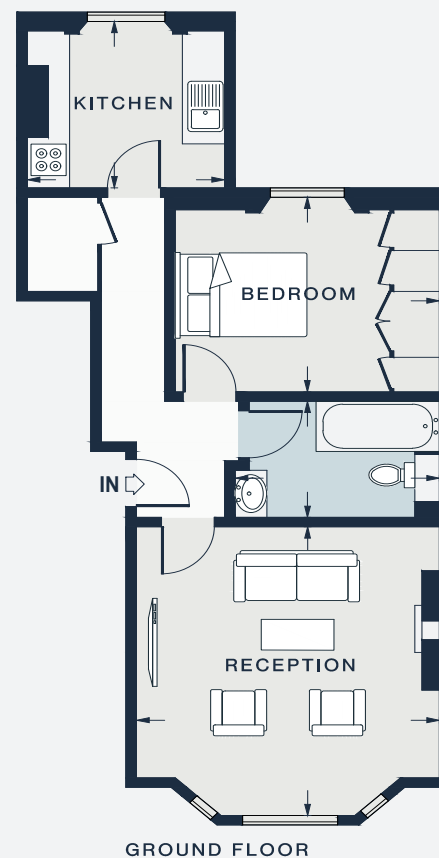
APPROXIMATE GROSS INTERNAL AREA

**540 sq ft / 50 sq m**

020 7727 1717

domusnova.com

LONDON | IBIZA



RECEPTION  
15'3 x 14'0 (4.8m x 4.3m)

KITCHEN  
9'0 x 8'4 (2.8m x .5m)

BEDROOM 1  
12'3 x 10'3 (3.7m x 3.1m)

Floor plans are for illustrative purposes only and not to scale. Compliant with RICS code of measuring practice.