

DOMUS NOVA

Westbourne Grove

Notting Hill W11

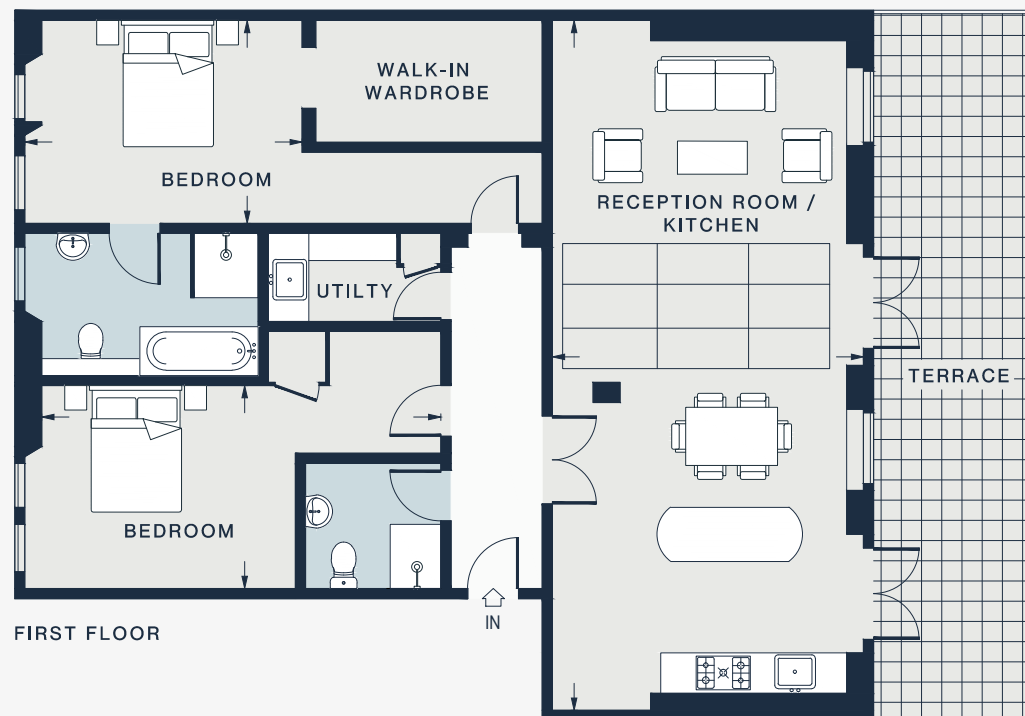
APPROXIMATE GROSS INTERNAL AREA

1,203 sq ft / 111.8 sq m

020 7221 7817

domusnova.com

LONDON | IBIZA



FIRST FLOOR

RECEPTION ROOM / KITCHEN

33'6 x 15'3 (10.2m x 4.6m)

BEDROOM

19'3 x 9'9 (5.9m x 3.0m)

BEDROOM

13'4 x 9'9 (4.1m x 3.0m)

Approx. Gross Internal Area = 1,203 sq ft / 111.8 sq m

Floor plans are for illustrative purposes only and not to scale. Compliant with RICS code of measuring practice. Furniture layouts are indicative only. This property may be furnished, part-furnished or unfurnished. Please refer to your agent for details.