
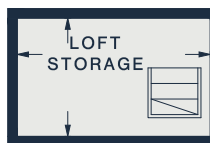
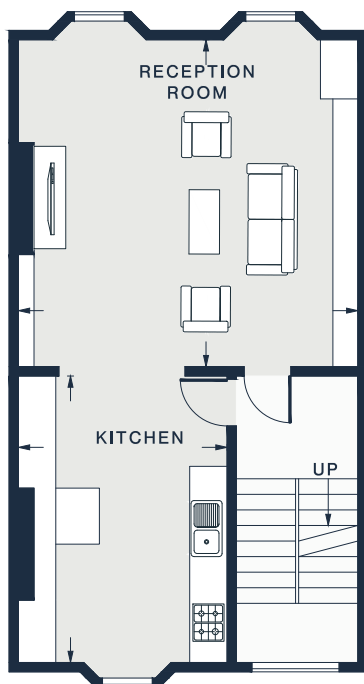


FIRST FLOOR

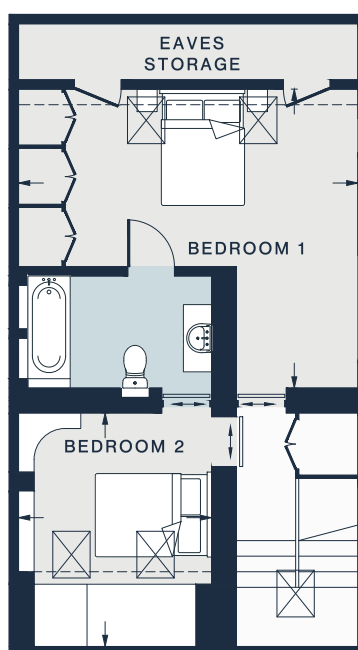
 = Reduced head height below 1.5m



LOFT FLOOR



SECOND FLOOR



THIRD FLOOR

RECEPTION ROOM  
17'11 x 17'3 (5.4m x 5.2m)

KITCHEN  
15'2 x 11'0 (4.6m x 3.3m)

LOFT STORAGE  
10'2 x 6'2 (3.10m x 1.88m)

BEDROOM 1  
17'10 x 15'8 (5.4m x 4.7m)

BEDROOM 2  
12'4 x 10'2 (3.7m x 3.1m)

Approx. Gross Internal Area = 1,284 sq ft / 119.3 sq m  
(Including Eaves / Loft Storage)

Floor plans are for illustrative purposes only and not to scale. Compliant with RICS code of measuring practice. Furniture layouts are indicative only. This property may be furnished, part-furnished or unfurnished. Please refer to your agent for details.